

For Research Use Only

calreticulin Recombinant antibody, PBS Only



Catalog Number: 80017-1-PBS

Basic Information

Catalog Number:

80017-1-PBS

Size:

100ug, Concentration: 1 mg/ml by
Nanodrop;

Source:

Rabbit

Isotype:

IgG

Immunogen Catalog Number:

AG26064

GenBank Accession Number:

BC002500

GeneID (NCBI):

811

UNIPROT ID:

P27797

Full Name:

calreticulin

Calculated MW:

60 kDa

Observed MW:

50-55 kDa

Purification Method:

Protein A purification

CloneNo.:

2B17

Applications

Tested Applications:

WB, IHC, Indirect ELISA

Species Specificity:

Human, mouse, rat

Storage

Storage:

Store at -80°C.

Storage Buffer:

PBS Only

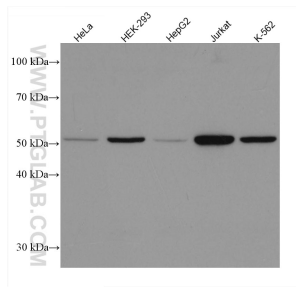
For technical support and original validation data for this product please contact:

T: 1 (888) 4PTGLAB (1-888-478-4522) (toll free
in USA), or 1(312) 455-8498 (outside USA)

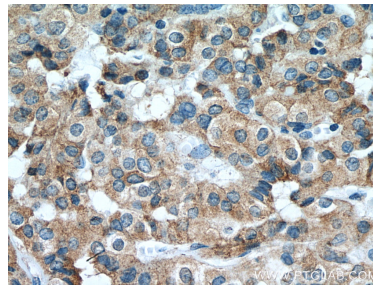
E: proteintech@ptglab.com
W: ptglab.com

This product is exclusively available under Proteintech Group brand and is not available to purchase from any other manufacturer.

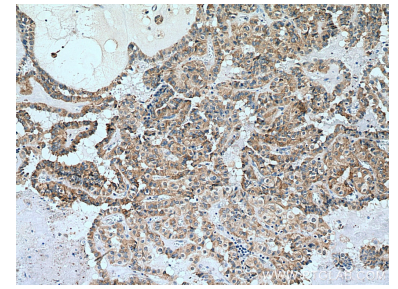
Selected Validation Data



Various lysates were subjected to SDS PAGE followed by western blot with 80017-1-RR (calreticulin antibody) at dilution of 1:5000 incubated at room temperature for 1.5 hours. This data was developed using the same antibody clone with 80017-1-PBS in a different storage buffer formulation.



Immunohistochemical analysis of paraffin-embedded human thyroid cancer tissue slide using 80017-1-RR (calreticulin antibody) at dilution of 1:400 (under 40x lens). Heat mediated antigen retrieval with Tris-EDTA buffer (pH 9.0). This data was developed using the same antibody clone with 80017-1-PBS in a different storage buffer formulation.



Immunohistochemical analysis of paraffin-embedded human thyroid cancer tissue slide using 80017-1-RR (calreticulin antibody) at dilution of 1:400 (under 10x lens). Heat mediated antigen retrieval with Tris-EDTA buffer (pH 9.0). This data was developed using the same antibody clone with 80017-1-PBS in a different storage buffer formulation.