

For Research Use Only

Phospho-MEK6 (Ser207) Recombinant antibody

Catalog Number: 80064-2-RR



Basic Information

Catalog Number: 80064-2-RR	GenBank Accession Number: BC012009	Purification Method: Protein A purification
Size: 100ul , Concentration: 1000 µg/ml by Nanodrop;	GeneID (NCBI): 5608	CloneNo.: 250293G8
Source: Rabbit	UNIPROT ID: P52564	Recommended Dilutions: WB: 1:1000-1:4000
Isotype: IgG	Full Name: mitogen-activated protein kinase kinase 6	
	Calculated MW: 334 aa, 37 kDa	
	Observed MW: 38 kDa, 40kDa	

Applications

Tested Applications: WB, ELISA	Positive Controls: WB : UV treated HEK-293 cells, UV NIH/3T3 cells
Species Specificity: human, mouse	

Background Information

MAPKK6 (Dual specificity mitogen activated protein kinase kinase 6), also known as MAP2K6 / MEK6 / MKK6, is a member of MAPKK protein kinase family. MKK6 plays an important role in intracellular signaling pathways leading toward activation of the p38 MAP kinase. MEK6 phosphorylates and activates p38 MAP kinase in response to inflammatory cytokines or environmental stress. Phosphorylation of Ser207 and Thr211 by MAP3Ks is critical for MEK6 activation, and acetylation of these residues by VopA blocks MEK6 activity(PMID: 26648936). The antibody also recognizes the ser218 phosphorylation site of MEK3.

Storage

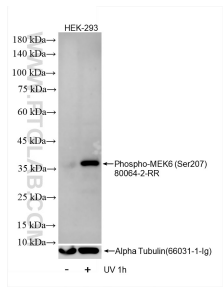
Storage:
Store at -20°C. Stable for one year after shipment.
Storage Buffer:
PBS with 0.02% sodium azide and 50% glycerol, pH7.3
Aliquoting is unnecessary for -20°C storage

*** 20ul sizes contain 0.1% BSA

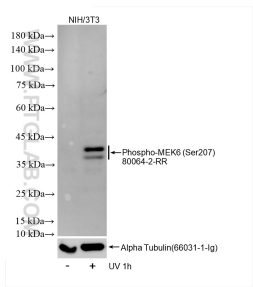
For technical support and original validation data for this product please contact:
T: 1 (888) 4PTGLAB (1-888-478-4522) (toll free in USA), or 1(312) 455-8498 (outside USA)
E: proteintech@ptglab.com
W: ptglab.com

This product is exclusively available under Proteintech Group brand and is not available to purchase from any other manufacturer.

Selected Validation Data



Non-treated HEK-293 cells and UV treated HEK-293 cells were subjected to SDS PAGE followed by western blot with 80064-2-RR (Phospho-MEK6 (Ser207) antibody) at dilution of 1:2000 incubated at room temperature for 1.5 hours. The membrane was stripped and re-blotted with Alpha Tubulin (66031-1-Ig) antibody as a loading control.



Non-treated NIH/3T3 cells and UV NIH/3T3 cells were subjected to SDS PAGE followed by western blot with 80064-2-RR (Phospho-MEK6 (Ser207) antibody) at dilution of 1:2000 incubated at room temperature for 1.5 hours. The membrane was stripped and re-blotted with Alpha Tubulin (66031-1-Ig) antibody as a loading control.