

For Research Use Only



Phospho-Beta Catenin (Ser675) Recombinant antibody, PBS Only

Catalog Number: 80084-1-PBS

Basic Information

Catalog Number: 80084-1-PBS	GenBank Accession Number: BC058926	Purification Method: Protein A purification
Size: 100ug , Concentration: 1mg/ml by Nanodrop;	GeneID (NCBI): 1499	CloneNo.: 6D6
Source: Rabbit	ENSEMBL Gene ID: ENSG00000168036	
Isotype: IgG	UNIPROT ID: P35222	
	Full Name: catenin (cadherin-associated protein), beta 1, 88kDa	
	Calculated MW: 781 aa, 86 kDa	
	Observed MW: 90-100 kDa	

Applications

Tested Applications:
WB, IF, Indirect ELISA

Species Specificity:
Human, mouse, rat

Background Information

β -Catenin, also known as CTNNB1, is an evolutionarily conserved, multifunctional intracellular protein. β -Catenin was originally identified in cell adherens junctions (AJs) where it functions to bridge the cytoplasmic domain of cadherins to α -catenin and the actin cytoskeleton. Besides its essential role in the AJs, β -catenin is also a key downstream component of the canonical Wnt pathway that plays diverse and critical roles in embryonic development and adult tissue homeostasis. The Wnt/ β -catenin pathway is also involved in the activation of other intracellular messengers such as calcium fluxes, JNK, and SRC kinases. Deregulation of β -catenin activity is associated with multiple diseases including cancers. (PMID: 22617422; 18334222). PKA was shown to phosphorylate β -catenin at Ser675. Phosphorylation at Ser675 induces β -catenin accumulation in the nucleus and increases its transcriptional activity.

Storage

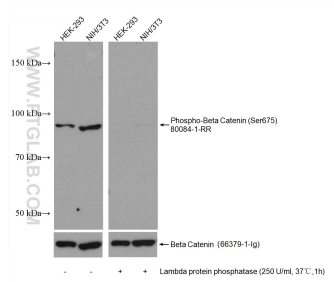
Storage:
Store at -80°C.

Storage Buffer:
PBS Only

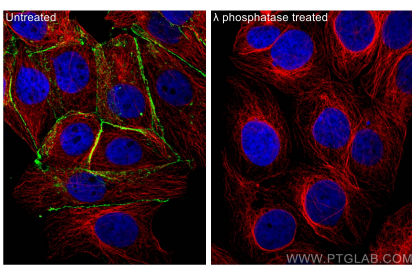
For technical support and original validation data for this product please contact:
T: 1 (888) 4PTGLAB (1-888-478-4522) (toll free in USA), or 1(312) 455-8498 (outside USA)
E: proteintech@ptglab.com
W: ptglab.com

This product is exclusively available under Proteintech Group brand and is not available to purchase from any other manufacturer.

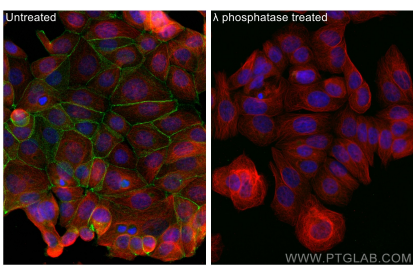
Selected Validation Data



Lambda protein phosphatase treated HEK-293 and NIH/3T3 cells were subjected to SDS PAGE followed by western blot with 80084-1-RR (Phospho-Beta Catenin (Ser675) antibody) at dilution of 1:10000 incubated at room temperature for 1.5 hours. The membrane was re-blotted with Beta Catenin antibody 66379-1-Ig as control. This data was developed using the same antibody clone with 80084-1-PBS in a different storage buffer formulation.



Immunofluorescent analysis of (4% PFA) fixed λ phosphatase treated MCF-7 cells using Phospho-Beta Catenin (Ser675) antibody (80084-1-RR, Clone: 6D6) at dilution of 1:1000 and Multi-rAb CoraLite® Plus 488-Goat Anti-Rabbit Recombinant Secondary Antibody (H+L) (RGAR002), Alpha Tubulin antibody (66031-1-Ig, Clone: 1E4C11, red). This data was developed using the same antibody clone with 80084-1-PBS in a different storage buffer formulation.



Immunofluorescent analysis of (4% PFA) fixed λ phosphatase treated MCF-7 cells using Phospho-Beta Catenin (Ser675) antibody (80084-1-RR, Clone: 6D6) at dilution of 1:1000 and CoraLite® 488-Conjugated AffiniPure Goat Anti-Rabbit IgG(H+L), Alpha Tubulin antibody (66031-1-Ig, Clone: 1E4C11, red). This data was developed using the same antibody clone with 80084-1-PBS in a different storage buffer formulation.