

For Research Use Only

Phospho-Beta Catenin (Ser675) Recombinant antibody

Catalog Number: 80084-1-RR

1 Publications



Basic Information

Catalog Number:

80084-1-RR

Size:

100ul, Concentration: 1000 ug/ml by
Nanodrop;

Source:

Rabbit

Isotype:

IgG

GenBank Accession Number:

BC058926

GeneID (NCBI):

1499

ENSEMBL Gene ID:

ENSG00000168036

UNIPROT ID:

P35222

Full Name:

catenin (cadherin-associated protein),
beta 1, 88kDa

Calculated MW:

781 aa, 86 kDa

Observed MW:

90-100 kDa

Purification Method:

Protein A purification

CloneNo.:

6D6

Recommended Dilutions:

WB 1:5000-1:50000

IF/ICC 1:500-1:2000

Applications

Tested Applications:

WB, IF/ICC, ELISA

Cited Applications:

WB

Species Specificity:

Human, mouse, rat

Cited Species:

mouse

Positive Controls:

WB : HEK-293 cells, λ phosphatase treated HEK-293, λ
phosphatase treated NIH/3T3 cells

IF/ICC : λ phosphatase treated MCF-7 cells, MCF-7
cells

Background Information

β -Catenin, also known as CTNNB1, is an evolutionarily conserved, multifunctional intracellular protein. β -Catenin was originally identified in cell adherens junctions (AJs) where it functions to bridge the cytoplasmic domain of cadherins to α -catenin and the actin cytoskeleton. Besides its essential role in the AJs, β -catenin is also a key downstream component of the canonical Wnt pathway that plays diverse and critical roles in embryonic development and adult tissue homeostasis. The Wnt/ β -catenin pathway is also involved in the activation of other intracellular messengers such as calcium fluxes, JNK, and SRC kinases. Deregulation of β -catenin activity is associated with multiple diseases including cancers. (PMID: 22617422; 18334222). PKA was shown to phosphorylate β -catenin at Ser675. Phosphorylation at Ser675 induces β -catenin accumulation in the nucleus and increases its transcriptional activity.

Notable Publications

Author	Pubmed ID	Journal	Application
Nan Yang	35682866	Int J Mol Sci	WB

Storage

Storage:

Store at -20°C. Stable for one year after shipment.

Storage Buffer:

PBS with 0.02% sodium azide and 50% glycerol pH 7.3.

Aliquoting is unnecessary for -20°C storage

*** 20ul sizes contain 0.1% BSA

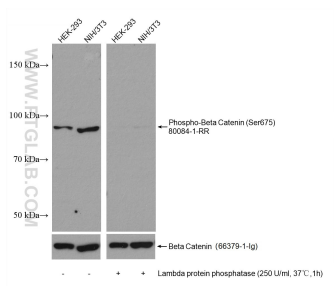
For technical support and original validation data for this product please contact:

T: 1 (888) 4PTGLAB (1-888-478-4522) (toll free
in USA), or 1(312) 455-8498 (outside USA)

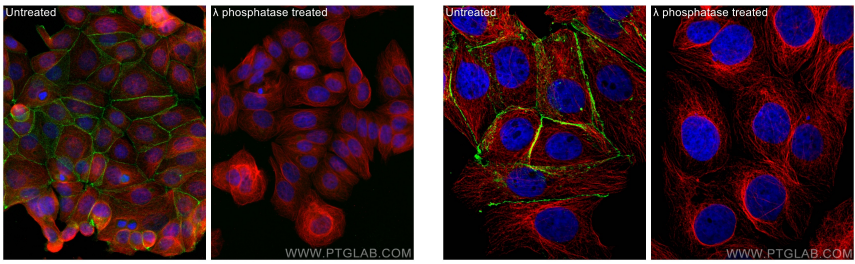
E: proteintech@ptglab.com
W: ptglab.com

This product is exclusively available under Proteintech
Group brand and is not available to purchase from any
other manufacturer.

Selected Validation Data



Lambda protein phosphatase treated HEK-293 and NIH/3T3 and Non-treated HEK-293 and NIH/3T3 cells were subjected to SDS PAGE followed by western blot with 80084-1-RR (Phospho-Beta Catenin (Ser675) antibody) at dilution of 1:10000 incubated at room temperature for 1.5 hours. The membrane was re-blotted with Beta Catenin antibody 66379-1-Ig as control.



Immunofluorescent analysis of (4% PFA) fixed Lambda phosphatase treated MCF-7 cells using Phospho-Beta Catenin (Ser675) antibody (80084-1-RR, Clone: 6D6) at dilution of 1:1000 and CoraLite®488-Conjugated AffiniPure Goat Anti-Rabbit IgG(H+L), Alpha Tubulin antibody (66031-1-Ig, Clone: 1E4C11, red).

Immunofluorescent analysis of (4% PFA) fixed Lambda phosphatase treated MCF-7 cells using Phospho-Beta Catenin (Ser675) antibody (80084-1-RR, Clone: 6D6) at dilution of 1:1000 and Multi-rAb CoraLite® Plus 488-Goat Anti-Rabbit Recombinant Secondary Antibody (H+L) (RGAR002), Alpha Tubulin antibody (66031-1-Ig, Clone: 1E4C11, red).