

For Research Use Only

# Phospho-STAT5A (Tyr694)/STAT5B (Tyr699) Recombinant antibody, PBS Only

Catalog Number: 80115-1-PBS



## Basic Information

<b>Catalog Number:</b> 80115-1-PBS	<b>GenBank Accession Number:</b> BC027036	<b>Purification Method:</b> Protein A purification
<b>Size:</b> 100ug , Concentration: 1mg/ml by Nanodrop;	<b>GeneID (NCBI):</b> 6776	<b>CloneNo.:</b> 2P21
<b>Source:</b> Rabbit	<b>UNIPROT ID:</b> P42229	
<b>Isotype:</b> IgG	<b>Full Name:</b> signal transducer and activator of transcription 5A	
	<b>Calculated MW:</b> 794 aa, 92 kDa	
	<b>Observed MW:</b> 90-95 kDa	

## Applications

**Tested Applications:**  
WB, FC (Intra), Indirect ELISA

**Species Specificity:**  
human

## Background Information

STAT5A, also named as STAT5, belongs to the transcription factor STAT family. In response to cytokines and growth factors, STAT family members are phosphorylated by the receptor associated kinases, and then form homo- or heterodimers that translocate to the cell nucleus where they act as transcription activators. STAT5A is activated by, and mediates the responses of many cell ligands, such as IL2, IL3, IL7 GM-CSF, erythropoietin, thrombopoietin, and different GHs. Phosphorylation at Tyr694 is obligatory for Stat5 activation. Activation of STAT5A in myeloma and lymphoma associated with a TEL/JAK2 gene fusion is independent of cell stimulus and has been shown to be essential for the tumorigenesis. The mouse counterpart of human STAT5A is found to induce the expression of BCL2L1/BCL-X(L), which suggests the antiapoptotic function of STAT5A in cells.

## Storage

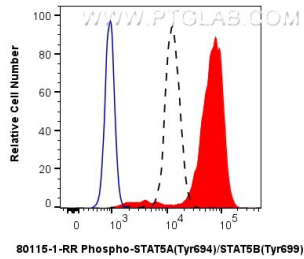
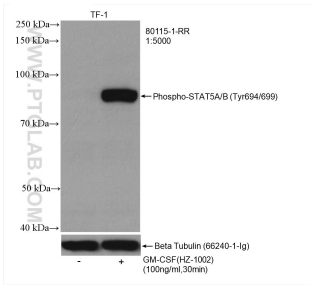
**Storage:**  
Store at -80°C.

**Storage Buffer:**  
PBS Only

For technical support and original validation data for this product please contact:  
T: 1 (888) 4PTGLAB (1-888-478-4522) (toll free in USA), or 1(312) 455-8498 (outside USA)  
E: [proteintech@ptglab.com](mailto:proteintech@ptglab.com)  
W: [ptglab.com](http://ptglab.com)

This product is exclusively available under Proteintech Group brand and is not available to purchase from any other manufacturer.

Selected Validation Data



Non-treated TF-1 and GM-CSF (HZ-1002) treated TF-1 cells were subjected to SDS PAGE followed by western blot with 80115-1-RR (Phospho-STAT5A (Tyr694)/STAT5B (Tyr699) antibody) at dilution of 1:5000 incubated at room temperature for 1.5 hours. The membrane was stripped and re-blotted with Beta Tubulin antibody as loading control. This data was developed using the same antibody clone with 80115-1-PBS in a different storage buffer formulation.

1X10<sup>6</sup> TF-1 cells untreated (dashed lines) or treated with GM-CSF which intracellularly stained with 0.06 ug Phospho-STAT5A (Tyr694)/STAT5B (Tyr699) Recombinant antibody (80115-1-RR, Clone:2P21) and Coralite® 488-Conjugated Goat Anti-Rabbit IgG(H+L) (SA00013-2)(red), or 0.06 ug Rabbit IgG Isotype Control Recombinant Antibody (98136-1-RR, Clone: 240953C9) (blue). Cells were fixed with 4% PFA and permeabilized with 90% MeOH. This data was developed

