

For Research Use Only

# Phospho-STAT5A (Ser726)/STAT5B (Ser731) Recombinant antibody

Catalog Number: 80138-2-RR



## Basic Information

Catalog Number:

80138-2-RR

Size:

100ul, Concentration: 1000 ug/ml by

Nanodrop;

Source:

Rabbit

Isotype:

IgG

GenBank Accession Number:

BC027036

GeneID (NCBI):

6776

UNIPROT ID:

P42229

Full Name:

signal transducer and activator of transcription 5A

Calculated MW:

794 aa, 92 kDa

Observed MW:

90-95 kDa

Purification Method:

Protein A purification

CloneNo.:

240709D6

Recommended Dilutions:

WB 1:5000-1:50000

IF/ICC 1:200-1:800

## Applications

Tested Applications:

WB, IF/ICC, FC (Intra), ELISA

Species Specificity:

human

Positive Controls:

WB : GM-CSF treated TF-1 cells,

IF/ICC : GM-CSF treated TF-1 cells,

## Background Information

STAT5 proteins consisting of STAT5A and STAT5B are the main targets of IL-3 signaling. Upon cytokine stimulation, JAK2 phosphorylates STAT5 and the phosphorylated STAT5 proteins dimerize and translocate into the nucleus, where, by binding DNA, they activate target genes including c-fos. In addition to this JAK-catalyzed tyrosine phosphorylation, STAT5 may undergo serine phosphorylation in the carboxy-terminal P(M)SP site in response to prolactin. (PMID: 15795318)

## Storage

Storage:

Store at -20°C. Stable for one year after shipment.

Storage Buffer:

PBS with 0.02% sodium azide and 50% glycerol pH 7.3.

Aliquoting is unnecessary for -20°C storage

\*\*\* 20ul sizes contain 0.1% BSA

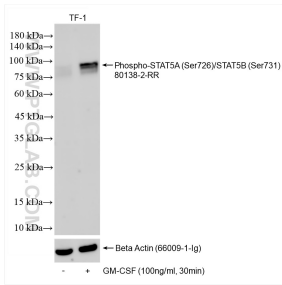
For technical support and original validation data for this product please contact:

T: 1 (888) 4PTGLAB (1-888-478-4522) (toll free in USA), or 1(312) 455-8498 (outside USA)

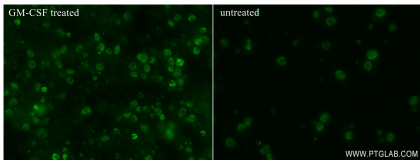
E: [proteintech@ptglab.com](mailto:proteintech@ptglab.com)  
W: [ptglab.com](http://ptglab.com)

This product is exclusively available under Proteintech Group brand and is not available to purchase from any other manufacturer.

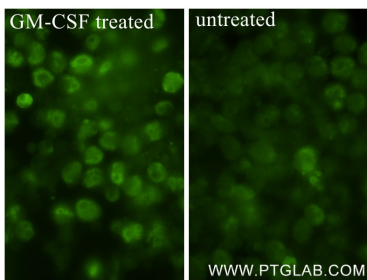
Selected Validation Data



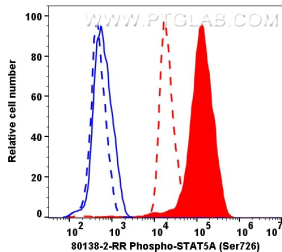
Non-treated and GM-CSF treated TF-1 cells were subjected to SDS PAGE followed by western blot with 80138-2-RR (Phospho-STAT5A (Ser726)/STAT5B (Ser731) antibody) at dilution of 1:10000 incubated at room temperature for 1.5 hours. The membrane was stripped and re-blotted with Beta Actin (66009-1-Ig) antibody as a loading control.



Immunofluorescent analysis of (4% PFA) fixed GM-CSF treated TF-1 cells using Phospho-STAT5A (Ser726)/STAT5B (Ser731) antibody (80138-2-RR, Clone: 240709D6 ) at dilution of 1:400 and CoraLite® 488-Conjugated Goat Anti-Rabbit IgG(H+L) (SA00013-2).



Immunofluorescent analysis of (4% PFA) fixed GM-CSF treated TF-1 cells using Phospho-STAT5A (Ser726)/STAT5B (Ser731) antibody (80138-2-RR, Clone: 240709D6 ) at dilution of 1:400 and CoraLite® 488-Conjugated Goat Anti-Rabbit IgG(H+L) (SA00013-2).



1x10<sup>6</sup> untreated TF-1 cells (dash lines) and 100 nM Calyculin A (30 minutes) treated TF-1 cells (full lines) were intracellularly stained with 0.4 µg Phospho-STAT5A (Ser726)/STAT5B (Ser731) Recombinant antibody (80138-2-RR, Clone: 240709D6, red) and Multi-rAb CoraLite® Plus 647-Goat Anti-Rabbit Recombinant Secondary Antibody (H+L) (Cat.NO. RGAR005). Rabbit IgG Isotype Control Recombinant Antibody (98136-1-RR, Clone: 240953C9, blue) was parallel stained