

For Research Use Only

# Phospho-ASK1 (Ser966) Recombinant monoclonal antibody

Catalog Number: 80142-8-RR



## Basic Information

<b>Catalog Number:</b> 80142-8-RR	<b>GenBank Accession Number:</b> BC054503	<b>Purification Method:</b> Protein A purification
<b>Size:</b> 100ul , Concentration: 1000 µg/ml by Nanodrop;	<b>GeneID (NCBI):</b> 4217	<b>CloneNo.:</b> 252570F2
<b>Source:</b> Rabbit	<b>UNIPROT ID:</b> Q99683	<b>Recommended Dilutions:</b> WB: 1:2000-1:10000
<b>Isotype:</b> IgG	<b>Full Name:</b> mitogen-activated protein kinase kinase kinase 5	
	<b>Calculated MW:</b> 155 kDa	
	<b>Observed MW:</b> 155 kDa	

## Applications

<b>Tested Applications:</b> WB, ELISA	<b>Positive Controls:</b> WB : COS-7 cells, NIH/3T3 cells, λ phosphatase treated COS-7 cells
<b>Species Specificity:</b> human, mouse, monkey	

## Background Information

ASK1(Apoptosis signal-regulating kinase 1) is also named as MAP3K5, MAPKKK5, MEKK5 and belongs to the MAP kinase kinase kinase subfamily. It is an evolutionarily conserved mitogen activated protein 3-kinase that activates both Jnk and p38 mitogen-activated protein kinases. ASK1 is activated in response to various cytotoxic stresses including TNF, Fas and reactive oxygen species (ROS) such as H<sub>2</sub>O<sub>2</sub>, and activates c-Jun NH 2-terminal kinase (JNK) and p38. The predicted MW of ASK1 is around 155 kDa and the 110-120 kDa fragment has also been reported.

## Storage

**Storage:**  
Store at -20°C. Stable for one year after shipment.  
**Storage Buffer:**  
PBS with 0.02% sodium azide and 50% glycerol, pH7.3  
Aliquoting is unnecessary for -20°C storage

\*\*\* 20ul sizes contain 0.1% BSA

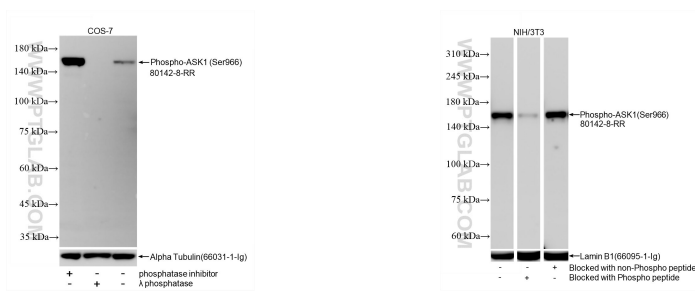
For technical support and original validation data for this product please contact:

T: 1 (888) 4PTGLAB (1-888-478-4522) (toll free in USA), or 1(312) 455-8498 (outside USA)

E: proteintech@ptglab.com  
W: ptglab.com

This product is exclusively available under Proteintech Group brand and is not available to purchase from any other manufacturer.

## Selected Validation Data



Non-treated COS-7, phosphatase inhibitor treated and  $\lambda$  phosphatase treated COS-7 cells were subjected to SDS PAGE followed by western blot with 80142-8-RR (Phospho-ASK1 (Ser966) antibody) at dilution of 1:5000 incubated at room temperature for 1.5 hours. The membrane was stripped and re-blotted with Alpha Tubulin (66031-1-ig) antibody as a loading control.

NIH/3T3 cell lysates were subjected to SDS PAGE followed by western blot with 80142-8-RR (Phospho-ASK1 (Ser966) antibody) blocked with BSA only, Phospho-ASK1 (Ser966) peptide or non-Phospho peptide at dilution of 1:5000 incubated at room temperature for 1.5 hours. The membrane was stripped and re-blotted with Lamin B1 (66095-1-ig) antibody as a loading control.