

For Research Use Only

STAT3 Recombinant antibody, PBS Only

Catalog Number: 80149-1-PBS

Featured Product



Basic Information

Catalog Number:

80149-1-PBS

Size:

100ug, Concentration: 1mg/ml by Nanodrop;

Source:

Rabbit

Isotype:

IgG

GenBank Accession Number:

BC000627

GeneID (NCBI):

6774

UNIPROT ID:

P40763

Full Name:

signal transducer and activator of transcription 3 (acute-phase response factor)

Calculated MW:

770 aa, 88 kDa

Observed MW:

88 kDa

Purification Method:

Protein A purification

CloneNo.:

3H1

Applications

Tested Applications:

WB, Indirect ELISA

Species Specificity:

human, mouse

Background Information

Signal transducer and activator of transcription 3 (acute-phase response factor) (STAT3, synonyms: APRF, FLJ20882, MGC16063) is a member of the STAT protein family. In response to cytokines and growth factors, STAT family members are phosphorylated by the receptor associated kinases, and then form homo- or heterodimers that translocate to the cell nucleus where they act as transcription activators. STAT3 is activated through phosphorylation in response to various cytokines and growth factors including IFNs, EGF, IL5, IL6, HGF, LIF and BMP2. STAT3 mediates the expression of a variety of genes in response to cell stimuli, and thus plays a key role in many cellular processes such as cell growth and apoptosis. The small GTPase Rac1 has been shown to bind and regulate the activity of STAT3.

Storage

Storage:

Store at -80°C.

Storage Buffer:

PBS Only

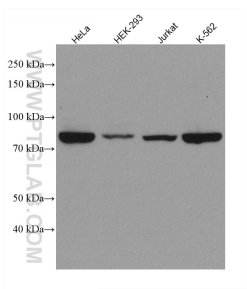
For technical support and original validation data for this product please contact:

T: 1 (888) 4PTGLAB (1-888-478-4522) (toll free in USA), or 1(312) 455-8498 (outside USA)

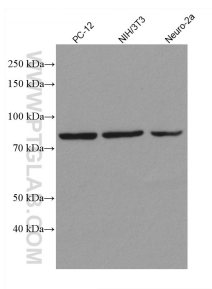
E: proteintech@ptglab.com
W: ptglab.com

This product is exclusively available under Proteintech Group brand and is not available to purchase from any other manufacturer.

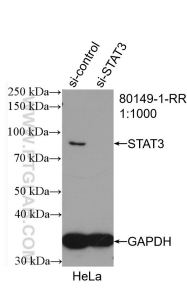
Selected Validation Data



Various lysates were subjected to SDS PAGE followed by western blot with 80149-1-RR (STAT3 antibody) at dilution of 1:4000 incubated at room temperature for 1.5 hours. This data was developed using the same antibody clone with 80149-1-PBS in a different storage buffer formulation.



Various lysates were subjected to SDS PAGE followed by western blot with 80149-1-RR (STAT3 antibody) at dilution of 1:4000 incubated at room temperature for 1.5 hours. This data was developed using the same antibody clone with 80149-1-PBS in a different storage buffer formulation.



WB result of STAT3 antibody (80149-1-RR; 1:1000; incubated at room temperature for 1.5 hours) with sh-Control and sh-STAT3 transfected HeLa cells. This data was developed using the same antibody clone with 80149-1-PBS in a different storage buffer formulation.