

For Research Use Only

S6 Ribosomal protein Recombinant antibody

Catalog Number: 80208-1-RR

5 Publications



Basic Information

Catalog Number:

80208-1-RR

Size:

100ul, Concentration: 300 ug/ml by Nanodrop;

Source:

Rabbit

Isotype:

IgG

GenBank Accession Number:

BC000524

GeneID (NCBI):

6194

UNIPROT ID:

P62753

Full Name:

ribosomal protein S6

Calculated MW:

29 kDa

Observed MW:

32 kDa

Purification Method:

Protein A purification

CloneNo.:

6L9

Recommended Dilutions:

WB 1:5000-1:50000

IF/ICC 1:125-1:500

Applications

Tested Applications:

WB, IF/ICC, ELISA

Cited Applications:

WB

Species Specificity:

human, mouse, rat, zebrafish

Cited Species:

human, mouse

Positive Controls:

WB : LNCaP cells, RAW 264.7 cells, zebrafish tissue, HeLa cells, HEK-293 cells, HepG2 cells, Jurkat cells, HSC-T6 cells, 4T1 cells

IF/ICC : HepG2 cells,

Background Information

Ribosomal protein S6 (RPS6), Phosphoprotein NP33. It may play an important role in controlling cell growth and proliferation through the selective translation of particular classes of mRNA. Ribosomal protein S6 is the major substrate of protein kinases in eukaryote ribosomes. The phosphorylation is stimulated by growth factors, tumor promoting agents, and mitogens. It is dephosphorylated at growth arrest. Phosphorylated at Ser-235 and Ser-236 by RPS6KA1 and RPS6KA3; phosphorylation at these sites facilitates the assembly of the preinitiation complex.

Notable Publications

Author	Pubmed ID	Journal	Application
Jie Li	39702426	NPJ Biofilms Microbiomes	WB
Liangzhong Liu	39437853	Biochim Biophys Acta Mol Cell Res	WB
Zhiyu Qian	38882096	ACS Omega	WB

Storage

Storage:

Store at -20°C. Stable for one year after shipment.

Storage Buffer:

PBS with 0.02% sodium azide and 50% glycerol, pH7.3

Aliquoting is unnecessary for -20°C storage

*** 20ul sizes contain 0.1% BSA

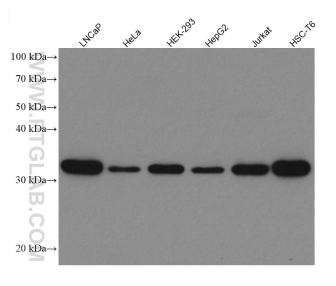
For technical support and original validation data for this product please contact:

T: 1 (888) 4PTGLAB (1-888-478-4522) (toll free in USA), or 1(312) 455-8498 (outside USA)

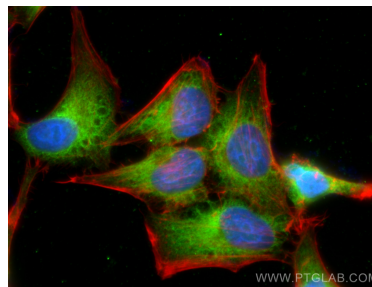
E: proteintech@ptglab.com
W: ptglab.com

This product is exclusively available under Proteintech Group brand and is not available to purchase from any other manufacturer.

Selected Validation Data



Various lysates were subjected to SDS PAGE followed by western blot with 80208-1-RR (S6 Ribosomal protein antibody) at dilution of 1:15000 and incubated at room temperature for 1.5 hours.



Immunofluorescent analysis of (4% PFA) fixed HepG2 cells using S6 Ribosomal protein antibody (80208-1-RR, Clone: 6L9) at dilution of 1:250 and CoraLite®488-Conjugated AffiniPure Goat Anti-Rabbit IgG(H+L).