

For Research Use Only

# Vimentin Recombinant antibody, PBS Only



Catalog Number: 80232-1-PBS

Featured Product

## Basic Information

<b>Catalog Number:</b> 80232-1-PBS	<b>GenBank Accession Number:</b> BC000163	<b>Purification Method:</b> Protein A purification
<b>Size:</b> 100ug , Concentration: 1 mg/ml by Nanodrop;	<b>GeneID (NCBI):</b> 7431	<b>CloneNo.:</b> 6K21
<b>Source:</b> Rabbit	<b>ENSEMBL Gene ID:</b> ENSG00000026025	
<b>Isotype:</b> IgG	<b>UNIPROT ID:</b> P08670	
<b>Immunogen Catalog Number:</b> AG0489	<b>Full Name:</b> vimentin	
	<b>Calculated MW:</b> 466 aa, 54 kDa	
	<b>Observed MW:</b> 50-55 kDa	

## Applications

**Tested Applications:**  
WB, IF, IHC, Indirect ELISA

**Species Specificity:**  
Human, mouse, rat

## Background Information

Vimentin, also named as VIM, belongs to the intermediate filament family. Vimentin is class-III intermediate filaments found in various non-epithelial cells, especially mesenchymal cells. Vimentin is important for stabilizing the architecture of the cytoplasm. Monocyte-derived macrophages secrete vimentin into the extracellular space in vitro. Secretion of vimentin was enhanced by the proinflammatory cytokine tumor necrosis factor-alpha (TNFA; 191160) and inhibited by the antiinflammatory cytokine IL10 (124092), suggesting that vimentin is involved in the immune response. Vimentin has specialized functions that contribute to specific dynamic cellular processes. As a phosphoprotein, 55-60 kDa of vimentin proteins can be observed due to the different phosphorylation level. Isoforms of vimentin (49 kDa and 60 kDa) had also been reported. (PMID: 8640945, 22728585).

## Storage

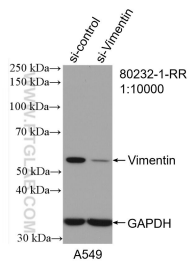
**Storage:**  
Store at -80°C.

**Storage Buffer:**  
PBS Only

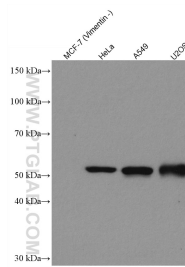
For technical support and original validation data for this product please contact:  
T: 1 (888) 4PTGLAB (1-888-478-4522) (toll free in USA), or 1(312) 455-8498 (outside USA)      E: proteintech@ptglab.com  
W: ptglab.com

This product is exclusively available under Proteintech Group brand and is not available to purchase from any other manufacturer.

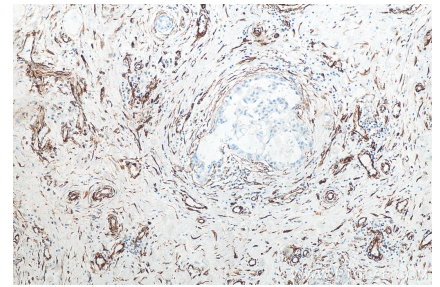
## Selected Validation Data



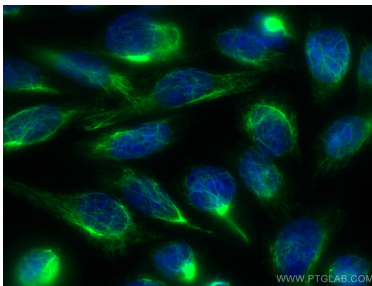
WB result of Vimentin antibody (80232-1-RR; 1:10000; incubated at room temperature for 1.5 hours) with sh-Control and sh-Vimentin transfected HeLa cells. This data was developed using the same antibody clone with 80232-1-PBS in a different storage buffer formulation.



Various lysates were subjected to SDS PAGE followed by western blot with 80232-1-RR (Vimentin antibody) at dilution of 1:50000 incubated at room temperature for 1.5 hours. This data was developed using the same antibody clone with 80232-1-PBS in a different storage buffer formulation.



Immunohistochemical analysis of paraffin-embedded human breast cancer tissue slide using 80232-1-RR (Vimentin antibody) at dilution of 1:2500 (under 10x lens). Heat mediated antigen retrieval with Tris-EDTA buffer (pH 9.0). This data was developed using the same antibody clone with 80232-1-PBS in a different storage buffer formulation.



Immunofluorescent analysis of (-20°C Ethanol) fixed HepG2 cells using Vimentin antibody (80232-1-RR, Clone: 6K21) at dilution of 1:400 and CoraLite®488-Conjugated AffiniPure Goat Anti-Rabbit IgG(H+L). This data was developed using the same antibody clone with 80232-1-PBS in a different storage buffer formulation.