

For Research Use Only

CTSA Recombinant antibody

Catalog Number: 80272-3-RR



Basic Information

| | | |
|--|--|---|
| Catalog Number: 80272-3-RR | GenBank Accession Number: BC000597 | Purification Method: Protein A purification |
| Size: 100ul , Concentration: 1000 µg/ml by Nanodrop; | GeneID (NCBI): 5476 | CloneNo.: 251086D9 |
| Source: Rabbit | UNIPROT ID: P10619 | Recommended Dilutions: WB: 1:1000-1:6000 |
| Isotype: IgG | Full Name: cathepsin A | |
| Immunogen Catalog Number: AG7073 | Calculated MW: 54 kDa | |
| | Observed MW: 54-60, 32, 20 kDa | |

Applications

| | |
|--|---|
| Tested Applications: WB, ELISA | Positive Controls: WB : A549 cells, DU 145 cells, PC-3 cells, SK-BR-3 cells |
| Species Specificity: human | |

Background Information

CTSA is also named as PPGB(protective protein for beta-galactosidase), PPCA(protective protein cathepsin A), cathepsin A, carboxypeptidase C, carboxypeptidase L and belongs to the peptidase S10 family. It is a ubiquitously expressed multifunctional enzyme, with deamidase, esterase, and carboxypeptidase activities and a preference for substrates with hydrophobic amino acid residues at the P1-prime position. It can be cleaved into the following 2 chains and defects in CTSA are the cause of galactosialidosis (GSL). This protein has 2 glycosylation sites. CTSA is synthesized as a 54-kDa precursor protein and composed of 32- and 20-kDa subunits linked together by disulfide bonds(PMID: 16461364,19574551).

Storage

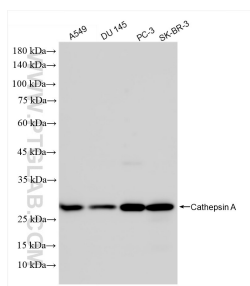
Storage:
Store at -20°C. Stable for one year after shipment.
Storage Buffer:
PBS with 0.02% sodium azide and 50% glycerol, pH7.3
Aliquoting is unnecessary for -20°C storage

*** 20ul sizes contain 0.1% BSA

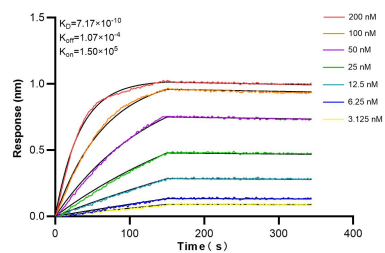
For technical support and original validation data for this product please contact:
T: 1 (888) 4PTGLAB (1-888-478-4522) (toll free in USA), or 1(312) 455-8498 (outside USA)
E: proteintech@ptglab.com
W: ptglab.com

This product is exclusively available under Proteintech Group brand and is not available to purchase from any other manufacturer.

Selected Validation Data



Various lysates were subjected to SDS PAGE followed by western blot with 80272-3-RR (CTSA antibody) at dilution of 1:3000 incubated at room temperature for 1.5 hours.



Biolayer interferometry (BLI) kinetic assays of 80272-3-RR against Human CTSA were performed. The affinity constant is 0.717 nM.