

For Research Use Only

CTSA Recombinant monoclonal antibody, PBS Only (Detector)

Catalog Number: 80273-3-PBS



Basic Information

Catalog Number: 80273-3-PBS	GenBank Accession Number: BC000597	Purification Method: Protein A purification
Size: 100ug , Concentration: 1 mg/ml by Nanodrop;	GeneID (NCBI): 5476	CloneNo.: 251086C2
Source: Rabbit	UNIPROT ID: P10619	
Isotype: IgG	Full Name: cathepsin A	
Immunogen Catalog Number: AG7073	Calculated MW: 54 kDa	

Applications

Tested Applications:
Sandwich ELISA, Indirect ELISA

Species Specificity:
human

Product Information

80273-3-PBS targets CTSA as part of a matched antibody pair:

MP02549-1: 80273-2-PBS capture and 80273-3-PBS detection (validated in Sandwich ELISA)

Unconjugated rabbit recombinant monoclonal antibody in PBS only (BSA and azide free) storage buffer at a concentration of 1 mg/mL, ready for conjugation. Created using Proteintech's proprietary in-house recombinant technology. Recombinant production enables unrivalled batch-to-batch consistency, easy scale-up, and future security of supply.

This conjugation ready format makes antibodies ideal for use in many applications including: ELISAs, multiplex assays requiring matched pairs, mass cytometry, and multiplex imaging applications. Antibody use should be optimized by the end user for each application and assay.

Storage

Storage:
Store at -80°C.

Storage Buffer:
PBS only, pH7.3

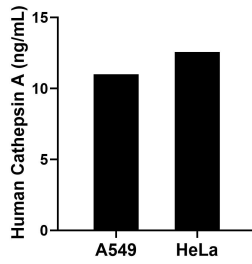
For technical support and original validation data for this product please contact:

T: 1 (888) 4PTGLAB (1-888-478-4522) (toll free in USA), or 1(312) 455-8498 (outside USA)

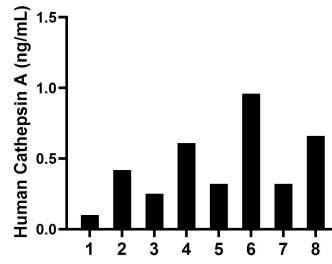
E: proteintech@ptglab.com
W: ptglab.com

This product is exclusively available under Proteintech Group brand and is not available to purchase from any other manufacturer.

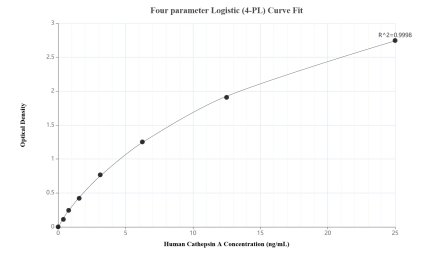
Selected Validation Data



The mean Cathepsin A concentration was determined to be 10.99 ng/mL in A549 cell extract based on a 1.10 mg/mL extract load and 12.57 ng/mL in HeLa cell extract based on a 1.10 mg/mL extract load.



Serum of eight individual healthy human donors was measured. The Cathepsin A concentration of detected samples was determined to be 0.46 ng/mL with a range of 0.10-0.96 ng/mL.



Sandwich ELISA standard curve of MP02549-1, Human Cathepsin A Recombinant Matched Antibody Pair - PBS only. 80273-2-PBS was coated to a plate as the capture antibody and incubated with serial dilutions of standard Ag7073. 80273-3-PBS was HRP conjugated as the detection antibody. Range: 0.391-25 ng/mL