

For Research Use Only

# HSP90AB1 Recombinant antibody, PBS Only



Catalog Number: 80301-1-PBS

Featured Product

## Basic Information

**Catalog Number:**

80301-1-PBS

**Size:**

100ug, Concentration: 1mg/ml by Nanodrop;

**Source:**

Rabbit

**Isotype:**

IgG

**Immunogen Catalog Number:**

AG1947

**GenBank Accession Number:**

BC014485

**GeneID (NCBI):**

3326

**UNIPROT ID:**

P08238

**Full Name:**

heat shock protein 90kDa alpha (cytosolic), class B member 1

**Calculated MW:**

723 aa, 83 kDa

**Purification Method:**

Protein A purification

**CloneNo.:**

5P14

## Applications

**Tested Applications:**

WB, IHC, IF/ICC, Indirect ELISA

**Species Specificity:**

Human, mouse, rat, zebrafish

## Background Information

HSP90AB1, also known as HSP90 beta, is a member of HSP90 family which includes cytosolic HSP90 alpha (HSP90AA1) and HSP90 beta, endoplasmic reticulum related GRP74, mitochondrial TRAP1. HSP90 proteins play a versatile role in cell regulation, forming complexes with a large number of cellular kinases, transcription factors, and other molecules. Upregulation of HSP90AB1 has been found in various cancers.

## Storage

**Storage:**

Store at -80°C.

**Storage Buffer:**

PBS Only

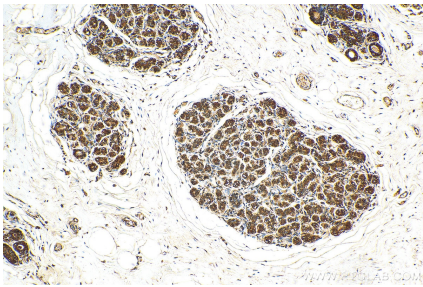
For technical support and original validation data for this product please contact:

T: 1 (888) 4PTGLAB (1-888-478-4522) (toll free in USA), or 1(312) 455-8498 (outside USA)

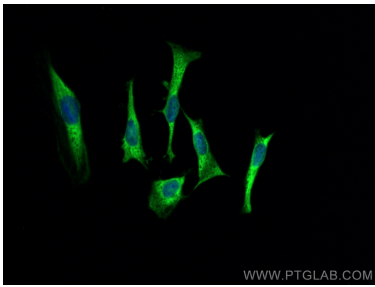
E: [proteintech@ptglab.com](mailto:proteintech@ptglab.com)  
W: [ptglab.com](http://ptglab.com)

This product is exclusively available under Proteintech Group brand and is not available to purchase from any other manufacturer.

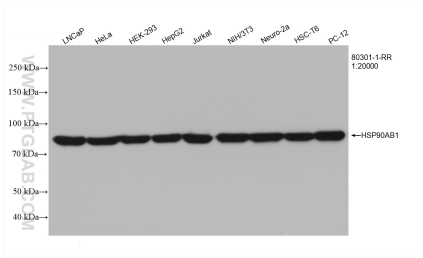
Selected Validation Data



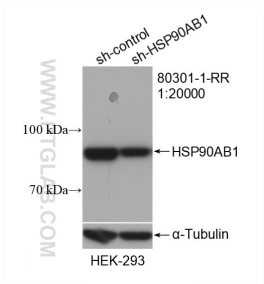
Immunohistochemical analysis of paraffin-embedded human breast cancer tissue slide using 80301-1-RR (HSP90AB1 antibody) at dilution of 1:500 (under 10x lens). Heat mediated antigen retrieval with Tris-EDTA buffer (pH 9.0). This data was developed using the same antibody clone with 80301-1-PBS in a different storage buffer formulation.



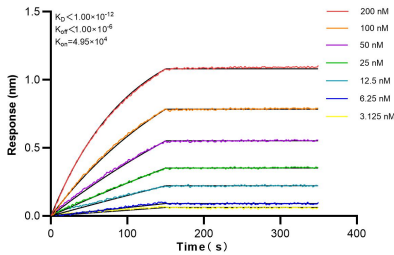
Immunofluorescent analysis of (-20°C Methanol) fixed HeLa cells using HSP90AB1 antibody (80301-1-RR, Clone: 5P14 ) at dilution of 1:400 and CoraLite®488-Conjugated AffiniPure Goat Anti-Rabbit IgG(H+L). This data was developed using the same antibody clone with 80301-1-PBS in a different storage buffer formulation.



Various lysates were subjected to SDS PAGE followed by western blot with 80301-1-RR (HSP90AB1 antibody) at dilution of 1:20000 incubated at room temperature for 1.5 hours. This data was developed using the same antibody clone with 80301-1-PBS in a different storage buffer formulation.



WB result of HSP90AB1 antibody (80301-1-RR; 1:20000; incubated at room temperature for 1.5 hours) with sh-Control and sh-HSP90AB1 transfected HEK-293 cells. This data was developed using the same antibody clone with 80301-1-PBS in a different storage buffer formulation.



Biolayer interferometry (BLI) kinetic assays of 80301-1-RR against Human HSP90AB1 were performed. The affinity constant is below 1 pM.