

For Research Use Only

METTL3 Recombinant antibody

Catalog Number: 80323-1-RR

Featured Product

1 Publications



Basic Information

Catalog Number:

80323-1-RR

Size:

100ul, Concentration: 1000 ug/ml by Nanodrop;

Source:

Rabbit

Isotype:

IgG

Immunogen Catalog Number:

AG7110

GenBank Accession Number:

BC001650

GeneID (NCBI):

56339

UNIPROT ID:

Q86U44

Full Name:

methyltransferase like 3

Calculated MW:

64 kDa

Observed MW:

65-70 kDa

Purification Method:

Protein A purification

CloneNo.:

219

Recommended Dilutions:

WB 1:5000-1:50000

IHC 1:200-1:1000

IF-P 1:50-1:500

IF/ICC 1:50-1:500

Applications

Tested Applications:

WB, IHC, IF/ICC, IF-P, ELISA

Cited Applications:

WB, IF

Species Specificity:

human, mouse, rat

Cited Species:

mouse, rat

Note-IHC: suggested antigen retrieval with *TE buffer pH 9.0*; (*) Alternatively, antigen retrieval may be performed with *citrate buffer pH 6.0*

Positive Controls:

WB: LNCaP cells, HeLa cells, HepG2 cells, HEK-293 cells, Jurkat cells, K-562 cells, Neuro-2a cells, NIH/3T3 cells, HSC-T6 cells

IHC: mouse testis tissue, human colon cancer tissue, human oesophagus cancer tissue, human lung cancer tissue, rat testis tissue

IF-P: Mouse testis tissue,

IF/ICC: Jurkat cells,

Background Information

METTL3 is a key S-adenosyl-L-methionine-binding subunit, which is component of a complex multicomponent enzyme that catalyzes the methylation of internal adenosine residues in eukaryotic mRNA, forming N6-methyladenosine. It contains 2 putative nuclear localization signals and 2 consensus methylation motifs. The calculated molecular weight of METTL3 is 64 kDa, but modified METTL3 is about 65-70 kDa.

Notable Publications

Author	Pubmed ID	Journal	Application
Qiang Du	39222906	Am J Pathol	WB,IF

Storage

Storage:

Store at -20°C. Stable for one year after shipment.

Storage Buffer:

PBS with 0.02% sodium azide and 50% glycerol pH 7.3.

Aliquoting is unnecessary for -20°C storage

***** 20ul sizes contain 0.1%BSA**

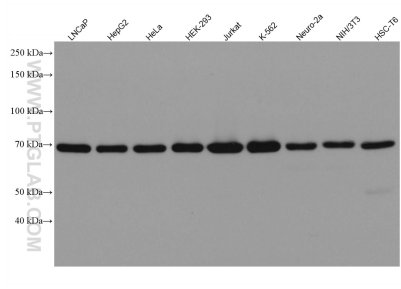
For technical support and original validation data for this product please contact:

T: 1 (888) 4PTGLAB (1-888-478-4522) (toll free in USA), or 1(312) 455-8498 (outside USA)

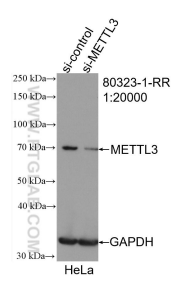
E: proteintech@ptglab.com
W: ptglab.com

This product is exclusively available under Proteintech Group brand and is not available to purchase from any other manufacturer.

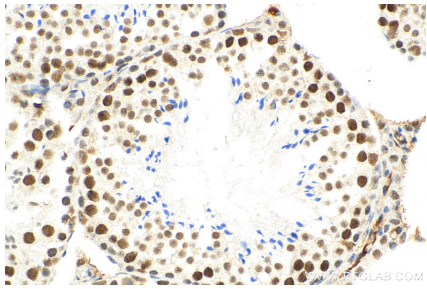
Selected Validation Data



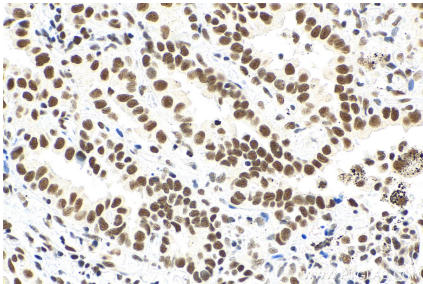
Various lysates were subjected to SDS PAGE followed by western blot with 80323-1-RR (METTL3 antibody) at dilution of 1:10000 incubated at room temperature for 1.5 hours.



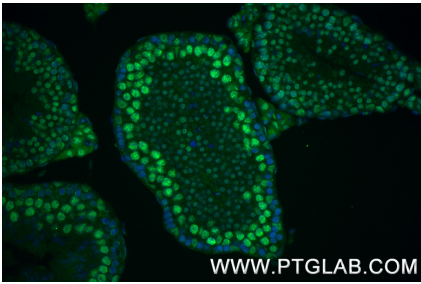
WB result of METTL3 antibody (80323-1-RR; 1:20000; incubated at room temperature for 1.5 hours) with sh-Control and sh-METTL3 transfected HeLa cells.



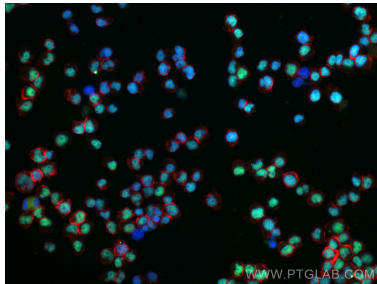
Immunohistochemical analysis of paraffin-embedded mouse testis tissue slide using 80323-1-RR (METTL3 antibody) at dilution of 1:200 (under 40x lens). Heat mediated antigen retrieval with Tris-EDTA buffer (pH 9.0).



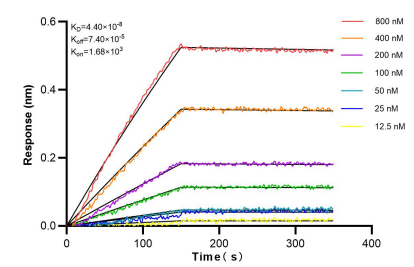
Immunohistochemical analysis of paraffin-embedded human lung cancer tissue slide using 80323-1-RR (METTL3 antibody) at dilution of 1:200 (under 40x lens). Heat mediated antigen retrieval with Tris-EDTA buffer (pH 9.0).



Immunofluorescent analysis of (4% PFA) fixed paraffin-embedded mouse testis tissue using METTL3 antibody (80323-1-RR, Clone: 219) at dilution of 1:200 and CoraLite®488-Conjugated Goat Anti-Rabbit IgG(H+L) (SA00013-2). Heat mediated antigen retrieval with Tris-EDTA buffer (pH 9.0).



Immunofluorescent analysis of (4% PFA) fixed Jurkat cells using METTL3 antibody (80323-1-RR, Clone: 219) at dilution of 1:200 and CoraLite®488-Conjugated AffiniPure Goat Anti-Rabbit IgG(H+L), CL594-Phalloidin (red).



Biolayer interferometry (BLI) kinetic assays of 80323-1-RR against Human METTL3 were performed. The affinity constant is 44 nM.