

For Research Use Only

Phospho-eEF2K (Thr57) Recombinant antibody, PBS Only

Catalog Number: 80351-2-PBS



Basic Information

Catalog Number:

80351-2-PBS

Size:

100ug, Concentration: 1 mg/ml by Nanodrop;

Source:

Rabbit

Isotype:

IgG

GenBank Accession Number:

BC032665

GeneID (NCBI):

29904

UNIPROT ID:

O00418

Full Name:

eukaryotic elongation factor-2 kinase

Calculated MW:

725 aa, 100 kDa

Observed MW:

100 kDa

Purification Method:

Protein A purification

CloneNo.:

250222A6

Applications

Tested Applications:

WB, Indirect ELISA

Species Specificity:

human

Background Information

Eukaryotic elongation factor-2 kinase (eEF2K), well-known to be a Ca^{2+} calmodulin (CaM)-dependent kinase, is overexpressed in several types of malignancies, most notably Triple negative breast cancer (TNBC). Increasing evidence indicates that eEF2K may modulate the expression of some apoptotic proteins such as XIAP, c-FLIPL, Bcl-XL, PI3K α and p70S6K to inhibit apoptotic process in cancer. On the other hand, it may regulate autophagy involved in AMPK, mTORC1 and ULK1, thereby promoting cancer cell survival. (PMID: 29094413)

Storage

Storage:

Store at -80°C.

Storage Buffer:

PBS only, pH7.3

For technical support and original validation data for this product please contact:

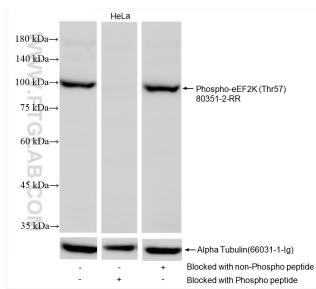
T: 1 (888) 4PTGLAB (1-888-478-4522) (toll free in USA), or 1(312) 455-8498 (outside USA)

E: proteintech@ptglab.com

W: ptglab.com

This product is exclusively available under Proteintech Group brand and is not available to purchase from any other manufacturer.

Selected Validation Data



HeLa cell lysates were subjected to SDS PAGE followed by western blot with 80351-2-RR (Phospho-eEF2K (Thr57) antibody) blocked with BSA only, Phospho-eEF2K (Thr57) peptide or non-Phospho peptide at dilution of 1:2000 incubated at room temperature for 1.5 hours. The membrane was stripped and re-blotted with Alpha Tubulin (66031-1-Ig) antibody as a loading control. This data was developed using the same antibody clone with 80351-2-PBS in a

