

For Research Use Only

Phospho-BAD (Ser112) Recombinant monoclonal antibody, PBS Only

Catalog Number: 80431-2-PBS



Basic Information

| | | |
|---|--|---|
| Catalog Number: 80431-2-PBS | GenBank Accession Number: BC001901 | Purification Method: Protein A purification |
| Size: 100ug , Concentration: 1 mg/ml by Nanodrop; | GeneID (NCBI): 572 | CloneNo.: 251074F11 |
| Source: Rabbit | UNIPROT ID: Q92934 | |
| Isotype: IgG | Full Name: BCL2-associated agonist of cell death | |
| | Calculated MW: 18 kDa | |
| | Observed MW: 25 kDa | |

Applications

Tested Applications:
WB, Indirect ELISA

Species Specificity:
human

Background Information

BAD, a distant member of the BCL-2 family, exerts its death promoting effect by hetero-dimerizing with BCL-XL and BCL-2 death antagonists in the mitochondria. The function of the pro-apoptotic molecule BAD is regulated by phosphorylation of two sites, serine-112 (Ser-112) and serine-136 (Ser-136). Phosphorylation at either site results in loss of the ability of BAD to heterodimerize with the survival proteins BCL-XL or BCL-2. Phosphorylated BAD binds to 14-3-3 and is sequestered in the cytoplasm. (PMID: 10597268)

Storage

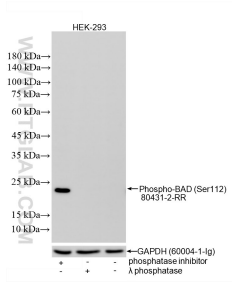
Storage:
Store at -80°C.

Storage Buffer:
PBS only, pH7.3

For technical support and original validation data for this product please contact:
T: 1 (888) 4PTGLAB (1-888-478-4522) (toll free in USA), or 1(312) 455-8498 (outside USA)
E: proteintech@ptglab.com
W: ptglab.com

This product is exclusively available under Proteintech Group brand and is not available to purchase from any other manufacturer.

Selected Validation Data



Non-treated HEK-293 cells, phosphatase inhibitor treated HEK-293 cells and λ phosphatase treated HEK-293 cells were subjected to SDS PAGE followed by western blot with 80431-2-RR (Phospho-BAD (Ser112) antibody) at dilution of 1:1000 incubated at room temperature for 1.5 hours. The membrane was stripped and re-blotted with GAPDH (60004-1-Ig) antibody as a loading control. This data was developed using the same antibody clone with 80431-2-PBS in a

