

For Research Use Only

Mouse TGF beta 1 Recombinant monoclonal antibody, PBS Only

Catalog Number:80458-2-PBS



Basic Information

Catalog Number: 80458-2-PBS	GenBank Accession Number: NM-011577	Purification Method: Protein A purification
Size: 100ug, Concentration: 1 mg/ml by Nanodrop;	GeneID (NCBI): 21803	CloneNo.: 250513C9
Source: Rabbit	UNIPROT ID: P04202	
Isotype: IgG	Full Name: transforming growth factor, beta 1	
Immunogen Catalog Number: EG3734	Observed MW: 48 kDa	

Applications

Tested Applications:
WB, IF/ICC, Indirect ELISA

Species Specificity:
human, mouse

Background Information

TGF beta 1 is a potent cytokine capable of regulating multiple cellular processes including cell proliferation, differentiation, wound healing, and immune response. TGF beta 1 is identified in various immune cells and its activity varies in different cell types or cells at different developmental stages¹. TGF beta 1 functions by binding to the TGFβ1 receptors, which subsequently activate the canonical SMAD pathway or non-canonical signaling cascades, such as the mitogen-activated protein kinase (MAPK) pathway, phosphatidylinositol-3 kinase and AKT (PI3K-AKT), and Rho family of GTPases (Rho GTPase). What is special about TGF beta 1 is its context-dependent nature that is particularly true for tumors. Full-length, inactive 44 kD TGFβ1 is cleaved into mature TGFβ1 (13 kD). TGFβ1 also homodimerizes and heterodimerizes with TGFβ2, so there is potential for multiple different band sizes in WB (12, 25, 45 to 65 kDa).

Storage

Storage:
Store at -80°C.

Storage Buffer:
PBS only, pH7.3

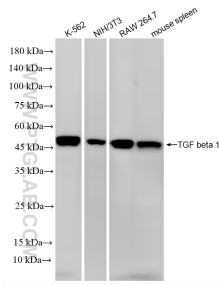
For technical support and original validation data for this product please contact:

T: 1 (888) 4PTGLAB (1-888-478-4522) (toll free in USA), or 1(312) 455-8498 (outside USA)

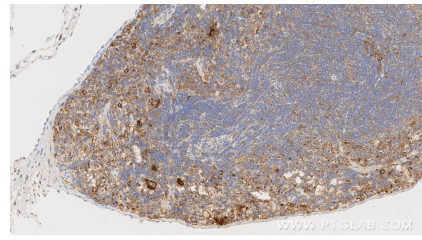
E: proteintech@ptglab.com
W: ptglab.com

This product is exclusively available under Proteintech Group brand and is not available to purchase from any other manufacturer.

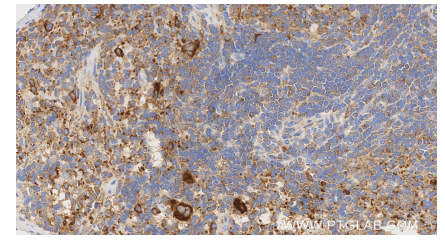
Selected Validation Data



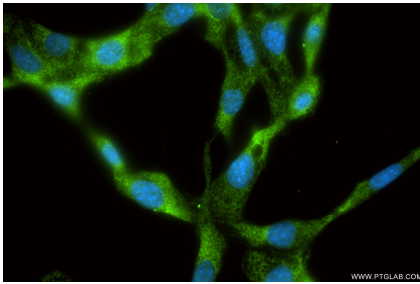
Various lysates were subjected to SDS PAGE followed by western blot with 80458-2-RR (Tgfb1 antibody) at dilution of 1:20000 incubated at room temperature for 1.5 hours. This data was developed using the same antibody clone with 80458-2-PBS in a different storage buffer formulation.



Immunohistochemical analysis of paraffin-embedded mouse spleen tissue slide using 80458-2-RR (TGF beta 1 antibody) at dilution of 1:1000 (under 20x lens). Heat mediated antigen retrieval with Tris-EDTA buffer (pH 9.0). This data was developed using the same antibody clone with 80458-2-PBS in a different storage buffer formulation.



Immunohistochemical analysis of paraffin-embedded mouse spleen tissue slide using 80458-2-RR (TGF beta 1 antibody) at dilution of 1:1000 (under 40x lens). Heat mediated antigen retrieval with Tris-EDTA buffer (pH 9.0). This data was developed using the same antibody clone with 80458-2-PBS in a different storage buffer formulation.



Immunofluorescent analysis of (-20°C Ethanol) fixed NIH/3T3 cells using TGF beta 1 antibody (80458-2-RR, Clone: 250513C9) at dilution of 1:400 and CoraLite@488-Conjugated Goat Anti-Rabbit IgG(H+L) (SA00013-2). This data was developed using the same antibody clone with 80458-2-PBS in a different storage buffer formulation.