

For Research Use Only

Beta Catenin Recombinant antibody, PBS Only



Catalog Number: 80488-1-PBS

Basic Information

Catalog Number: 80488-1-PBS	GenBank Accession Number: BC058926	Purification Method: Protein A purification
Size: 100ug, Concentration: 1 mg/ml by Nanodrop;	GeneID (NCBI): 1499	CloneNo.: 2124
Source: Rabbit	ENSEMBL Gene ID: ENSG00000168036	
Isotype: IgG	UNIPROT ID: P35222	
	Full Name: catenin (cadherin-associated protein), beta 1, 88kDa	
	Calculated MW: 781 aa, 86 kDa	
	Observed MW: 92 kDa	

Applications

Tested Applications:
WB, IF, IHC, Indirect ELISA

Species Specificity:
Human, Pig, Mouse, Rat, Zebrafish

Background Information

β -Catenin, also known as CTNNB1, is an evolutionarily conserved, multifunctional intracellular protein. β -Catenin is a 92-kDa protein, originally identified in cell adherens junctions (AJs) where it functions to bridge the cytoplasmic domain of cadherins to α -catenin and the actin cytoskeleton. Besides its essential role in the AJs, β -catenin is also a key downstream component of the canonical Wnt pathway that plays diverse and critical roles in embryonic development and adult tissue homeostasis. The Wnt/ β -catenin pathway is also involved in the activation of other intracellular messengers such as calcium fluxes, JNK, and SRC kinases. Deregulation of β -catenin activity is associated with multiple diseases including cancers. (PMID: 22617422; 18334222)

Storage

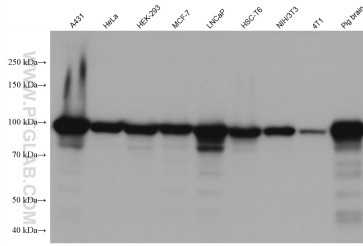
Storage:
Store at -80°C.

Storage Buffer:
PBS Only

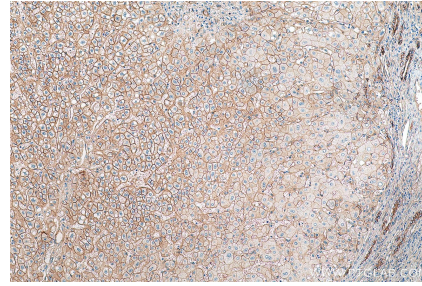
For technical support and original validation data for this product please contact:
T: 1 (888) 4PTGLAB (1-888-478-4522) (toll free in USA), or 1(312) 455-8498 (outside USA) E: proteintech@ptglab.com
W: ptglab.com

This product is exclusively available under Proteintech Group brand and is not available to purchase from any other manufacturer.

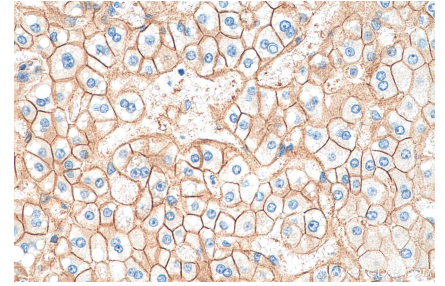
Selected Validation Data



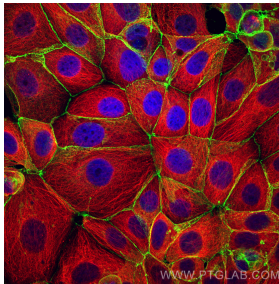
Various lysates were subjected to SDS PAGE followed by western blot with 80488-1-RR (Beta Catenin antibody) at dilution of 1:10000 incubated at room temperature for 1.5 hours. This data was developed using the same antibody clone with 80488-1-PBS in a different storage buffer formulation.



Immunohistochemical analysis of paraffin-embedded human liver cancer tissue slide using 80488-1-RR (Beta Catenin antibody) at dilution of 1:2000 (under 10x lens). Heat mediated antigen retrieval with Tris-EDTA buffer (pH 9.0). This data was developed using the same antibody clone with 80488-1-PBS in a different storage buffer formulation.



Immunohistochemical analysis of paraffin-embedded human liver cancer tissue slide using 80488-1-RR (Beta Catenin antibody) at dilution of 1:2000 (under 40x lens). Heat mediated antigen retrieval with Tris-EDTA buffer (pH 9.0). This data was developed using the same antibody clone with 80488-1-PBS in a different storage buffer formulation.



Immunofluorescent analysis of (4% PFA) fixed MCF-7 cells using Beta Catenin antibody (80488-1-RR, Clone: 2J24) at dilution of 1:2000 and CoraLite®488-Conjugated AffiniPure Goat Anti-Rabbit IgG(H+L), Alpha Tubulin antibody (66031-1-Ig, Clone: 1E4C11, red). This data was developed using the same antibody clone with 80488-1-PBS in a different storage buffer formulation.