

For Research Use Only

# Beta Catenin Recombinant antibody

Catalog Number: 80488-1-RR **2 Publications**



## Basic Information

<b>Catalog Number:</b> 80488-1-RR	<b>GenBank Accession Number:</b> BC058926	<b>Purification Method:</b> Protein A purification
<b>Size:</b> 100ul , Concentration: 1000 ug/ml by Nanodrop;	<b>GeneID (NCBI):</b> 1499	<b>CloneNo.:</b> 2J24
<b>Source:</b> Rabbit	<b>ENSEMBL Gene ID:</b> ENSG00000168036	<b>Recommended Dilutions:</b> WB: 1:5000-1:50000 IHC: 1:1000-1:4000 IF/ICC: 1:1000-1:4000
<b>Isotype:</b> IgG	<b>UNIPROT ID:</b> P35222	
	<b>Full Name:</b> catenin (cadherin-associated protein), beta 1, 88kDa	
	<b>Calculated MW:</b> 781 aa, 86 kDa	
	<b>Observed MW:</b> 92 kDa	

## Applications

<b>Tested Applications:</b> WB, IHC, IF/ICC, ELISA	<b>Positive Controls:</b>
<b>Cited Applications:</b> WB, IF, ColP	<b>WB :</b> A431 cells, zebrafish tissue, HeLa cells, HEK-293 cells, MCF-7 cells, LNCaP cells, HSC-T6 cells, NIH/3T3 cells, 4T1 cells, pig brain tissue
<b>Species Specificity:</b> human, mouse, rat, pig, zebrafish	<b>IHC :</b> human liver cancer tissue, human breast cancer tissue, human colon cancer tissue, human rectal cancer tissue
<b>Cited Species:</b> human	<b>IF/ICC :</b> MCF-7 cells,
<b>Note-IHC: suggested antigen retrieval with TE buffer pH 9.0; (*) Alternatively, antigen retrieval may be performed with citrate buffer pH 6.0</b>	

## Background Information

$\beta$ -Catenin, also known as CTNNB1, is an evolutionarily conserved, multifunctional intracellular protein.  $\beta$ -Catenin is a 92-kDa protein, originally identified in cell adherens junctions (AJs) where it functions to bridge the cytoplasmic domain of cadherins to  $\alpha$ -catenin and the actin cytoskeleton. Besides its essential role in the AJs,  $\beta$ -catenin is also a key downstream component of the canonical Wnt pathway that plays diverse and critical roles in embryonic development and adult tissue homeostasis. The Wnt/ $\beta$ -catenin pathway is also involved in the activation of other intracellular messengers such as calcium fluxes, JNK, and SRC kinases. Deregulation of  $\beta$ -catenin activity is associated with multiple diseases including cancers. (PMID: 22617422; 18334222)

## Notable Publications

Author	Pubmed ID	Journal	Application
Jing Li	39934532	Discov Oncol	
Chao Zhang	39707043	Cell Biol Toxicol	WB,IF,ColP

## Storage

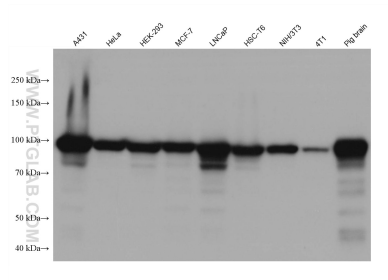
**Storage:**  
Store at -20°C. Stable for one year after shipment.  
**Storage Buffer:**  
PBS with 0.02% sodium azide and 50% glycerol, pH7.3  
Aliquoting is unnecessary for -20°C storage

\*\*\* 20ul sizes contain 0.1% BSA

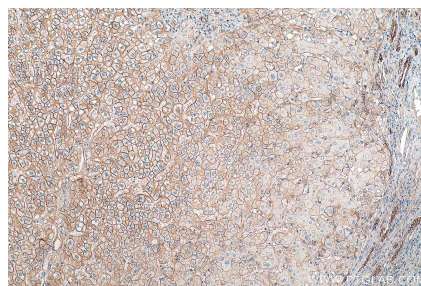
For technical support and original validation data for this product please contact:  
T: 1 (888) 4PTGLAB (1-888-478-4522) (toll free in USA), or 1(312) 455-8498 (outside USA)  
E: proteintech@ptglab.com  
W: ptglab.com

This product is exclusively available under Proteintech Group brand and is not available to purchase from any other manufacturer.

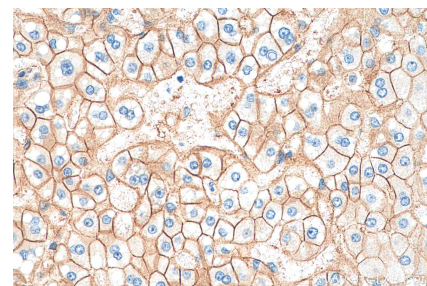
## Selected Validation Data



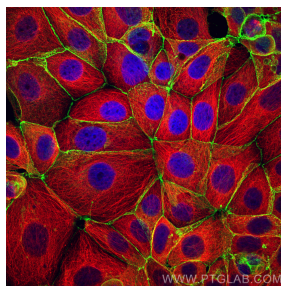
Various lysates were subjected to SDS PAGE followed by western blot with 80488-1-RR (Beta Catenin antibody) at dilution of 1:10000 incubated at room temperature for 1.5 hours.



Immunohistochemical analysis of paraffin-embedded human liver cancer tissue slide using 80488-1-RR (Beta Catenin antibody) at dilution of 1:2000 (under 10x lens). Heat mediated antigen retrieval with Tris-EDTA buffer (pH 9.0).



Immunohistochemical analysis of paraffin-embedded human liver cancer tissue slide using 80488-1-RR (Beta Catenin antibody) at dilution of 1:2000 (under 40x lens). Heat mediated antigen retrieval with Tris-EDTA buffer (pH 9.0).



Immunofluorescent analysis of (4% PFA) fixed MCF-7 cells using Beta Catenin antibody (80488-1-RR, Clone: 2J24) at dilution of 1:500 and CoraLite®488-Conjugated AffiniPure Goat Anti-Rabbit IgG(H+L), Alpha Tubulin antibody (66031-1-Ig, Clone: 1E4C11, red).