

For Research Use Only

# TOM20 Recombinant antibody, PBS Only

Catalog Number: 80501-1-PBS



## Basic Information

<b>Catalog Number:</b> 80501-1-PBS	<b>GenBank Accession Number:</b> BC000882	<b>Purification Method:</b> Protein A purification
<b>Size:</b> 100ug , Concentration: 1mg/ml by Nanodrop;	<b>GeneID (NCBI):</b> 9804	<b>CloneNo.:</b> 1D22
<b>Source:</b> Rabbit	<b>UNIPROT ID:</b> Q15388	
<b>Isotype:</b> IgG	<b>Full Name:</b> translocase of outer mitochondrial membrane 20 homolog (yeast)	
<b>Immunogen Catalog Number:</b> AG2378	<b>Calculated MW:</b> 145 aa, 16 kDa	
	<b>Observed MW:</b> 16 kDa	

## Applications

**Tested Applications:**  
WB, IHC, IF/ICC, Indirect ELISA

**Species Specificity:**  
human, mouse, rat, pig, chicken, zebrafish

## Background Information

TOM20, also named as KIAA0016, belongs to the Tom20 family. It is a central component of the receptor complex responsible for the recognition and translocation of cytosolically synthesized mitochondrial preproteins. Together with TOM22, TOM20 functions as the transit peptide receptor at the surface of the mitochondrion outer membrane and facilitates the movement of preproteins into the TOM40 translocation pore. TOM20 is characterized as major docking receptors to mediate the recognition by different mechanisms.

## Storage

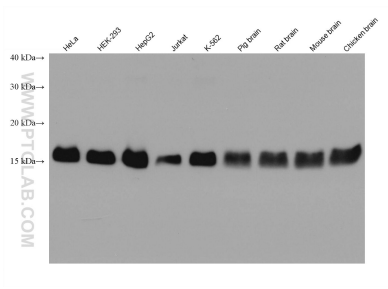
**Storage:**  
Store at -80°C.

**Storage Buffer:**  
PBS only, pH7.3

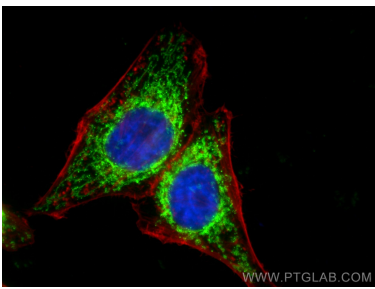
For technical support and original validation data for this product please contact:  
T: 1 (888) 4PTGLAB (1-888-478-4522) (toll free in USA), or 1(312) 455-8498 (outside USA)  
E: [proteintech@ptglab.com](mailto:proteintech@ptglab.com)  
W: [ptglab.com](http://ptglab.com)

This product is exclusively available under Proteintech Group brand and is not available to purchase from any other manufacturer.

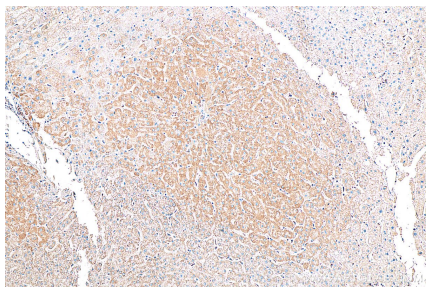
## Selected Validation Data



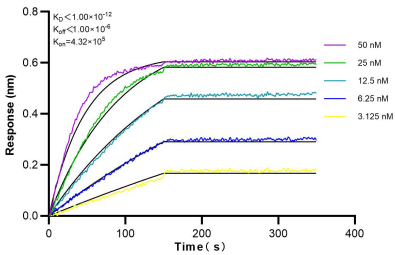
Various lysates were subjected to SDS PAGE followed by western blot with 80501-1-RR (TOM20 antibody) at dilution of 1:5000 incubated at room temperature for 1.5 hours. This data was developed using the same antibody clone with 80501-1-PBS in a different storage buffer formulation.



Immunofluorescent analysis of (4% PFA) fixed HepG2 cells using TOM20 antibody (80501-1-RR, Clone: 1D22) at dilution of 1:200 and CoraLite®488-Conjugated AffiniPure Goat Anti-Rabbit IgG(H+L), CL594-Phalloidin (red). This data was developed using the same antibody clone with 80501-1-PBS in a different storage buffer formulation.



Immunohistochemical analysis of paraffin-embedded human liver tissue slide using 80501-1-RR (TOM20 antibody) at dilution of 1:200 (under 10x lens). Heat mediated antigen retrieval with Tris-EDTA buffer (pH 9.0). This data was developed using the same antibody clone with 80501-1-PBS in a different storage buffer formulation.



Biolayer interferometry (BLI) kinetic assays of 80501-1-RR against Human TOM20 were performed. The affinity constant is below 1 pM.