

For Research Use Only

# Connexin 43 Recombinant antibody, PBS Only

Catalog Number: 80543-1-PBS



## Basic Information

<b>Catalog Number:</b> 80543-1-PBS	<b>GenBank Accession Number:</b> BC026329	<b>Purification Method:</b> Protein A purification
<b>Size:</b> 100ug , Concentration: 1mg/ml by Nanodrop;	<b>GeneID (NCBI):</b> 2697	<b>CloneNo.:</b> 306
<b>Source:</b> Rabbit	<b>UNIPROT ID:</b> P17302	
<b>Isotype:</b> IgG	<b>Full Name:</b> gap junction protein, alpha 1, 43kDa	
<b>Immunogen Catalog Number:</b> AG25533	<b>Calculated MW:</b> 43 kDa	
	<b>Observed MW:</b> 43 kDa	

## Applications

**Tested Applications:**  
WB, IHC, IF/ICC, IF-P, Indirect ELISA

**Species Specificity:**  
human, mouse, rat, pig

## Background Information

Connexin 43 (Cx43, also known as gap junction alpha-1), a member of connexin family, plays essential roles in gap junction communication that facilitates direct communication among adjacent cells (PMID: 12270943). Usually, six connexin proteins oligomerize into a hemi-channel or connexon during intercellular channel formation (PMID: 12270943). Mutations of Connexin 43 may cause a series of diseases such as oculodentodigital dysplasia (ODDD), syndactyly 3 (SDTY3), hypoplastic left heart syndrome 1 (HLHS1) and so on (PMID: 18161618, 1472936, 1147490).

## Storage

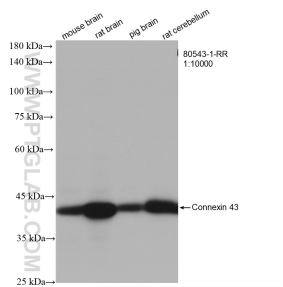
**Storage:**  
Store at -80°C.

**Storage Buffer:**  
PBS Only

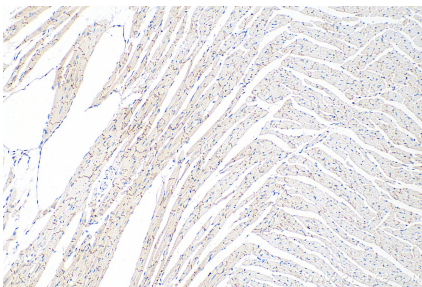
For technical support and original validation data for this product please contact:  
T: 1 (888) 4PTGLAB (1-888-478-4522) (toll free in USA), or 1(312) 455-8498 (outside USA)  
E: proteintech@ptglab.com  
W: ptglab.com

This product is exclusively available under Proteintech Group brand and is not available to purchase from any other manufacturer.

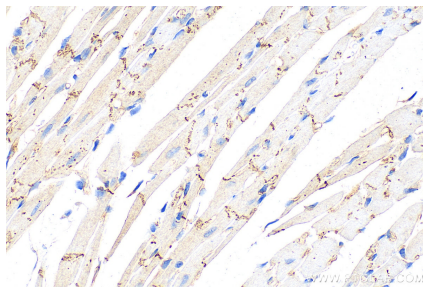
Selected Validation Data



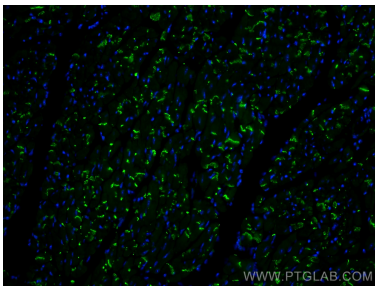
Various lysates were subjected to SDS PAGE followed by western blot with 80543-1-RR (Connexin 43 antibody) at dilution of 1:10000 incubated at room temperature for 1.5 hours. This data was developed using the same antibody clone with 80543-1-PBS in a different storage buffer formulation.



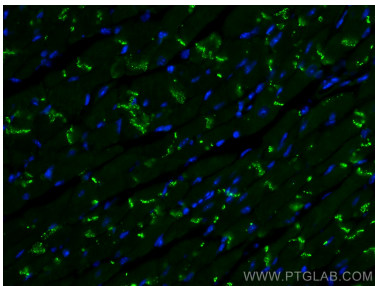
Immunohistochemical analysis of paraffin-embedded mouse heart tissue slide using 80543-1-RR (Connexin 43 antibody) at dilution of 1:2000 (under 10x lens). Heat mediated antigen retrieval with Tris-EDTA buffer (pH 9.0). This data was developed using the same antibody clone with 80543-1-PBS in a different storage buffer formulation.



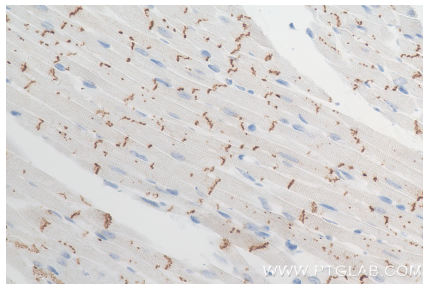
Immunohistochemical analysis of paraffin-embedded mouse heart tissue slide using 80543-1-RR (Connexin 43 antibody) at dilution of 1:2000 (under 40x lens). Heat mediated antigen retrieval with Tris-EDTA buffer (pH 9.0). This data was developed using the same antibody clone with 80543-1-PBS in a different storage buffer formulation.



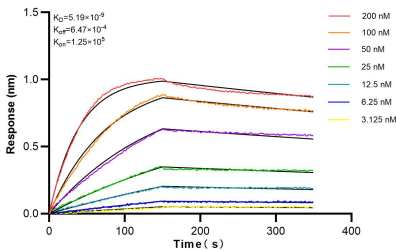
Immunofluorescent analysis of (4% PFA) fixed mouse heart tissue using Connexin 43 antibody (80543-1-RR, Clone: 3O6) at dilution of 1:200 and CoraLite®488-Conjugated AffiniPure Goat Anti-Rabbit IgG(H+L). This data was developed using the same antibody clone with 80543-1-PBS in a different storage buffer formulation.



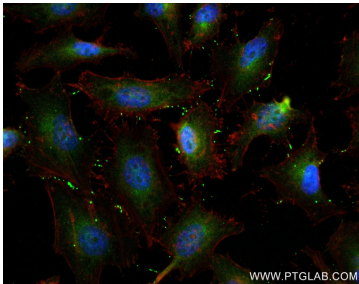
Immunofluorescent analysis of (4% PFA) fixed mouse heart tissue using Connexin 43 antibody (80543-1-RR, Clone: 3O6) at dilution of 1:200 and CoraLite®488-Conjugated AffiniPure Goat Anti-Rabbit IgG(H+L). This data was developed using the same antibody clone with 80543-1-PBS in a different storage buffer formulation.



Immunohistochemical analysis of paraffin-embedded mouse heart tissue slide using 80543-1-RR (Connexin 43 antibody) at dilution of 1:2000 (under 40x lens). Heat mediated antigen retrieval with Tris-EDTA buffer (pH 9.0). This data was developed using the same antibody clone with 80543-1-PBS in a different storage buffer formulation.



Bioluminescence resonance energy transfer (BRET) kinetic assays of 80543-1-RR against Human Connexin 43 were performed. The affinity constant is 5.19 nM.



Immunofluorescent analysis of (4% PFA) fixed HeLa cells using Connexin 43 antibody (80543-1-RR, Clone: 3O6) at dilution of 1:250 and CoraLite®488-Conjugated AffiniPure Goat Anti-Rabbit IgG(H+L) (SA00013-2), CL594-Phalloidin (red). This data was developed using the same antibody clone with 80543-1-PBS in a different storage buffer formulation.