

For Research Use Only

Occludin Recombinant antibody

Catalog Number: 80545-1-RR



Basic Information

Catalog Number:

80545-1-RR

Size:

100ul , Concentration: 500 ug/ml by Nanodrop;

Source:

Rabbit

Isotype:

IgG

Immunogen Catalog Number:

AG26173

GenBank Accession Number:

BC029886

GeneID (NCBI):

4950

UNIPROT ID:

Q16625

Full Name:

occludin

Calculated MW:

522 aa, 59 kDa

Observed MW:

59 kDa

Purification Method:

Protein A purification

CloneNo.:

8B2

Recommended Dilutions:

WB 1:5000-1:50000

IP 0.5-4.0 ug for 1.0-3.0 mg of total protein lysate

IF/ICC 1:250-1:1000

Applications

Tested Applications:

WB, IF/ICC, IP, ELISA

Species Specificity:

Human, Mouse, Pig

Positive Controls:

WB : HEK-293 cells, HaCaT cells, pig colon tissue, mouse colon tissue, HUVEC cells, U2OS cells

IP : HUVEC cells,

IF/ICC : MCF-7 cells,

Background Information

Occludin is an integral membrane protein located at the tight junction. It is a tetraspanin protein with four transmembrane domains, intracellular N and C termini and two extracellular loops. Occludin plays a role in the formation and regulation of the tight junction paracellular permeability barrier. Occludin can exist in different isoforms, owing to modifications at the posttranscriptional and posttranslational levels, the monomeric occludin migrates as 53-65 kDa on SDS-PAGE (PMID: 22083955; 19457074).

Storage

Storage:

Store at -20°C. Stable for one year after shipment.

Storage Buffer:

PBS with 0.02% sodium azide and 50% glycerol pH 7.3.

Aliquoting is unnecessary for -20°C storage

*** 20ul sizes contain 0.1% BSA

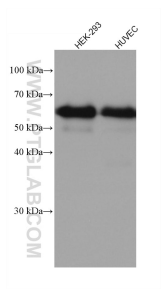
For technical support and original validation data for this product please contact:

T: 1 (888) 4PTGLAB (1-888-478-4522) (toll free in USA), or 1(312) 455-8498 (outside USA)

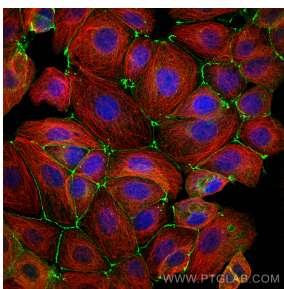
E: proteintech@ptglab.com
W: ptglab.com

This product is exclusively available under Proteintech Group brand and is not available to purchase from any other manufacturer.

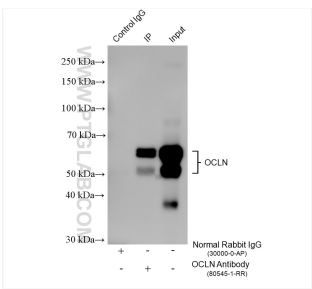
Selected Validation Data



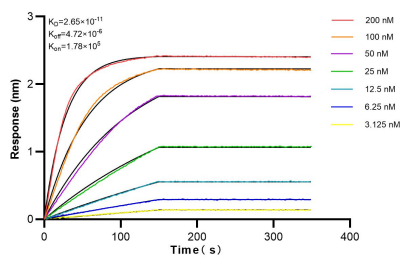
HEK-293 cells were subjected to SDS PAGE followed by western blot with 80545-1-RR (Occludin antibody) at dilution of 1:40000 incubated at room temperature for 1.5 hours.



Immunofluorescent analysis of (4% PFA) fixed MCF-7 cells using Occludin antibody (80545-1-RR, Clone: 8B2) at dilution of 1:500 and CoraLite®488-Conjugated Goat Anti-Rabbit IgG(H+L), Alpha Tubulin antibody (66031-1-Ig, Clone: 1E4C11, red).



IP result of anti-Occludin (IP:80545-1-RR, 4ug; Detection:80545-1-RR 1:15000) with HUVEC cells lysate 1410 ug.



Biolayer interferometry (BLI) kinetic assays of 80545-1-RR against Human Occludin were performed. The affinity constant is 26.5 pM.