

For Research Use Only

Phospho-PRAS40 (Thr246) Recombinant antibody, PBS Only

Catalog Number: 80565-2-PBS



Basic Information

Catalog Number: 80565-2-PBS	GenBank Accession Number: BC051844	Purification Method: Protein A purification
Size: 100ug, Concentration: 1 mg/ml by Nanodrop;	GeneID (NCBI): 84335	CloneNo.: 250305A2
Source: Rabbit	UNIPROT ID: Q96B36	
Isotype: IgG	Full Name: AKT1 substrate 1 (proline-rich)	
	Calculated MW: 27 kDa	
	Observed MW: 40 kDa	

Applications

Tested Applications:
WB, Indirect ELISA
Species Specificity:
human

Background Information

PRAS40 is expressed in a variety of tissues in vivo and has multiple phosphorylation sites, which its activity is closely related to phosphorylation. Studies have shown that PRAS40 is involved in regulating cell growth, cell apoptosis, oxidative stress, autophagy and angiogenesis, as well as various of signalling pathways such as mammalian target of rapamycin (mTOR), protein kinase B (PKB/Akt), nuclear factor kappa-B (NF- κ B), proto-oncogene serine/threonine-protein kinase PIM-1 (PIM1) and pyruvate kinase M2 (PKM2). PGK1 phosphorylated PRAS40 at Threonine 246, which could be inhibited by blocking the interaction. PRAS40 can be phosphorylated by p-AKT at Thr246 site and promote the signal downstream to the mTOR signaling pathway. (PMID: 35058442, PMID: 32855714)

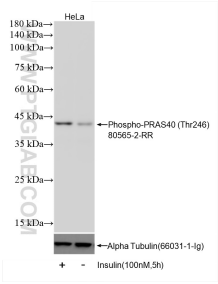
Storage

Storage:
Store at -80°C.
Storage Buffer:
PBS only, pH7.3

For technical support and original validation data for this product please contact:
T: 1 (888) 4PTGLAB (1-888-478-4522) (toll free in USA), or 1(312) 455-8498 (outside USA)
E: proteintech@ptglab.com
W: ptglab.com

This product is exclusively available under Proteintech Group brand and is not available to purchase from any other manufacturer.

Selected Validation Data



Non-treated HeLa cells and Insulin treated HeLa cells were subjected to SDS PAGE followed by western blot with 80565-2-RR (Phospho-PRAS40 (Thr246) antibody) at dilution of 1:2000 incubated at room temperature for 1.5 hours. The membrane was stripped and re-blotted with Alpha Tubulin (66031-1-Ig) antibody as a loading control. This data was developed using the same antibody clone with 80565-2-PBS in a different storage buffer formulation.