

For Research Use Only

Phospho-PDH E1 Alpha (Ser300) Recombinant antibody

Catalog Number: 80572-1-RR **2 Publications**



Basic Information

Catalog Number: 80572-1-RR	GenBank Accession Number: BC002406	Purification Method: Protein A purification
Size: 100ul , Concentration: 1000 µg/ml by Nanodrop;	GeneID (NCBI): 5160	CloneNo.: 2E19
Source: Rabbit	UNIPROT ID: P08559	Recommended Dilutions: WB 1:5000-1:50000 IF/ICC 1:500-1:2000
Isotype: IgG	Full Name: pyruvate dehydrogenase (lipoamide) alpha 1	
	Calculated MW: 43 kDa	
	Observed MW: 40 kDa	

Applications

Tested Applications: WB, IF/ICC, ELISA	Positive Controls: WB : HeLa cells, HSC-T6 cells, NIH/3T3 cells, Calyculin A treated HeLa cells, Calyculin A treated HEK-293 cells, Calyculin A treated HSC-T6 cells, Calyculin A treated NIH/3T3 cells IF/ICC : λ phosphatase treated HepG2 cells,
Cited Applications: WB, IP	
Species Specificity: human, mouse, rat	
Cited Species: human, mouse	

Background Information

PDH E1 Alpha (PDHA1), as the major component of PDH, can be phosphorylated and inactivated by PDHK1. PDHA1 contains three serine residues (Ser232, Ser293, or Ser300) that can be reversibly phosphorylated by a dedicated family of four inhibitory pyruvate dehydrogenase kinases (PDHK1-4) and two reactivating phosphatases (PDP1, 2). Hypoxia induces the expression of PDHK1 and PDHK3 and hyperphosphorylates PDHA1. Phosphorylated PDHA1 inactivates the whole pyruvate dehydrogenase complex (PDC), reduces pyruvate entering into the tricarboxylic acid (TCA) cycle for oxidative phosphorylation, enhances the Warburg effect and promotes tumorigenesis. (PMID: 30993888, PMID: 34749809)

Notable Publications

Author	Pubmed ID	Journal	Application
Wenwen Li	39700269	Science	WB,IP
Jie Wang	39550366	Nat Commun	WB

Storage

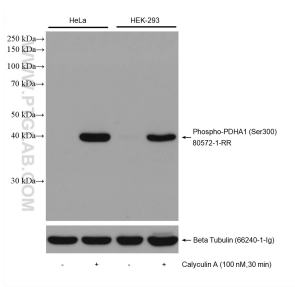
Storage:
Store at -20°C. Stable for one year after shipment.
Storage Buffer:
PBS with 0.02% sodium azide and 50% glycerol
Aliquoting is unnecessary for -20°C storage

*** 20ul sizes contain 0.1% BSA

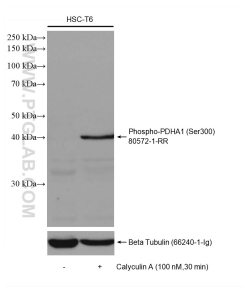
For technical support and original validation data for this product please contact:
T: 1 (888) 4PTGLAB (1-888-478-4522) (toll free in USA), or 1(312) 455-8498 (outside USA)
E: proteintech@ptglab.com
W: ptglab.com

This product is exclusively available under Proteintech Group brand and is not available to purchase from any other manufacturer.

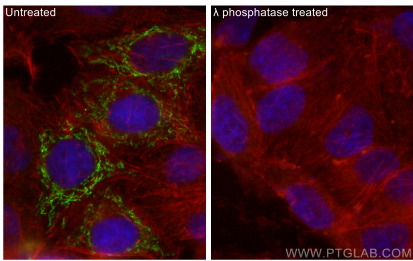
Selected Validation Data



Non-treated and Calyculin A treated cells were subjected to SDS PAGE followed by western blot with 80572-1-RR (Phospho-PDH E1 Alpha (Ser300) antibody) at dilution of 1:10000 incubated at room temperature for 1.5 hours. The membrane was stripped and re-blotted with Beta Tubulin antibody as loading control.



Non-treated and Calyculin A treated HSC-T6 cells were subjected to SDS PAGE followed by western blot with 80572-1-RR (Phospho-PDH E1 Alpha (Ser300) antibody) at dilution of 1:10000 incubated at room temperature for 1.5 hours. The membrane was stripped and re-blotted with Beta Tubulin antibody as loading control.



Immunofluorescent analysis of (4% PFA) fixed λ phosphatase treated HepG2 cells using Phospho-PDH E1 Alpha (Ser300) antibody (80572-1-RR, Clone: 2E19) at dilution of 1:1000 and CoraLite[®]488-Conjugated AffiniPure Goat Anti-Rabbit IgG(H+L), CL594-Phalloidin (red).