

For Research Use Only

# Phospho-S6 Ribosomal protein (Ser240/244) Recombinant antibody, PBS Only

Catalog Number: 80575-3-PBS



## Basic Information

### Catalog Number:

80575-3-PBS

### Size:

100ug , Concentration: 1 mg/ml by  
Nanodrop;

### Source:

Rabbit

### Isotype:

IgG

### GenBank Accession Number:

BC000524

### GeneID (NCBI):

6194

### UNIPROT ID:

P62753

### Full Name:

ribosomal protein S6

### Calculated MW:

29 kDa

### Observed MW:

32 kDa

### Purification Method:

Protein A purification

### CloneNo.:

242048C2

## Applications

### Tested Applications:

WB, Indirect ELISA

### Species Specificity:

human, mouse, rat

## Background Information

Ribosomal protein S6 (RPS6) is one of the components of the 40S ribosomal subunit. RPS6 has been functionally regarded as the stimulator and/or inhibitor of certain types of mRNA translation, as well as the regulator of cellular metabolisms, cells size, survival and proliferation. RPS6 is phosphorylated at multiple sites, comprised between Ser235 and Ser247, by the p70 rpS6 kinase (S6K) 1, which is a major downstream effector of the mammalian target of rapamycin complex 1 (mTORC1). Phosphorylation of RPS6 at the dual site Ser235/236 occurs also independently of mTORC1, via the p90 ribosomal S6 kinases (RSK), which are activated by the extracellular signal-regulated kinases (ERK). Recent studies performed in pancreatic  $\beta$ -cells identified PKA as an additional RPS6 kinase, specifically involved in the phosphorylation of Ser235/236. (PMID: 26490682, PMID: 21814187, PMID: 31112404)

## Storage

### Storage:

Store at -80°C.

### Storage Buffer:

PBS only, pH7.3

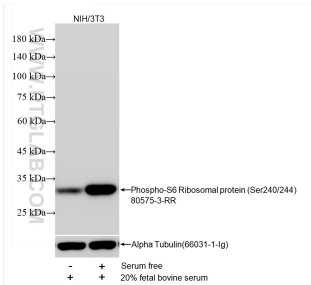
For technical support and original validation data for this product please contact:

T: 1 (888) 4PTGLAB (1-888-478-4522) (toll free  
in USA), or 1(312) 455-8498 (outside USA)

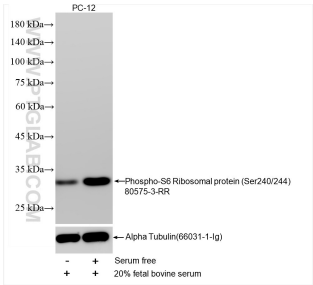
E: [proteintech@ptglab.com](mailto:proteintech@ptglab.com)  
W: [ptglab.com](http://ptglab.com)

This product is exclusively available under Proteintech Group brand and is not available to purchase from any other manufacturer.

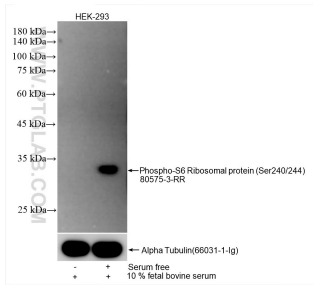
Selected Validation Data



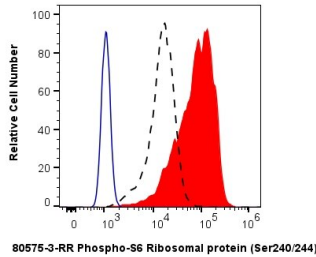
NIH/3T3 cells treated with 20% fetal bovine serum after serum free were subjected to SDS PAGE followed by western blot with 80575-3-RR (Phospho-S6 Ribosomal protein (Ser240/244) antibody) at dilution of 1:10000 incubated at room temperature for 1.5 hours. The membrane was stripped and re-blotted with Alpha Tubulin (66031-1-Ig) antibody as loading control. This data was developed using the same antibody clone with 80575-3-PBS in a different storage



PC-12 cells treated with 20% fetal bovine serum after serum free were subjected to SDS PAGE followed by western blot with 80575-3-RR (Phospho-S6 Ribosomal protein (Ser240/244) antibody) at dilution of 1:10000 incubated at room temperature for 1.5 hours. The membrane was stripped and re-blotted with Alpha Tubulin (66031-1-Ig) antibody as loading control. This data was developed using the same antibody clone with 80575-3-PBS in a different storage



HEK-293 cells treated with 10% fetal bovine serum after serum free were subjected to SDS PAGE followed by western blot with 80575-3-RR (Phospho-S6 Ribosomal protein (Ser240/244) antibody) at dilution of 1:10000 incubated at room temperature for 1.5 hours. The membrane was stripped and re-blotted with Alpha Tubulin (66031-1-Ig) antibody as loading control. This data was developed using the same antibody clone with 80575-3-PBS in a different storage



1X10<sup>6</sup> HEK-293 cells untreated (dashed lines) or treated with serum-starved overnight and 10% fetal bovine serum which intracellularly stained with 0.06 ug Phospho-S6 Ribosomal protein (Ser240/244) Recombinant antibody (80575-3-RR, Clone:242048C2) and CoraLite®488-Conjugated Goat Anti-Rabbit IgG(H+L) (SA00013-2)(red), or 0.06 ug Rabbit IgG Isotype Control RecAb (98136-1-RR, Clone: 240953C9) (blue). Cells were fixed with 4%