

For Research Use Only

# Phospho-c-SRC (Ser17) Recombinant antibody, PBS Only

Catalog Number: 80706-3-PBS



## Basic Information

### Catalog Number:

80706-3-PBS

### Size:

100ug, Concentration: 1 mg/ml by Nanodrop;

### Source:

Rabbit

### Isotype:

IgG

### GenBank Accession Number:

BC011566

### GeneID (NCBI):

6714

### ENSEMBL Gene ID:

ENSG00000197122

### UNIPROT ID:

P12931

### Full Name:

v-src sarcoma (Schmidt-Ruppin A-2)  
viral oncogene homolog (avian)

### Calculated MW:

60 kDa

### Observed MW:

60 kDa

### Purification Method:

Protein A purification

### CloneNo.:

250845F12

## Applications

### Tested Applications:

WB, Indirect ELISA

### Species Specificity:

human

## Background Information

SRC, also named as SRC1 and p60-Src, belongs to the protein kinase superfamily, Tyr protein kinase family and SRC subfamily. The phosphorylation of c-SRC at Ser17 is essential for its activation. This phosphorylation event is often mediated by protein kinase A (PKA) and is crucial for downstream signaling events. (PMID: 23360994)

## Storage

### Storage:

Store at -80°C.

### Storage Buffer:

PBS only, pH7.3

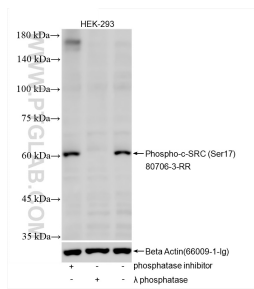
For technical support and original validation data for this product please contact:

T: 1 (888) 4PTGLAB (1-888-478-4522) (toll free in USA), or 1(312) 455-8498 (outside USA)

E: [proteintech@ptglab.com](mailto:proteintech@ptglab.com)  
W: [ptglab.com](http://ptglab.com)

This product is exclusively available under Proteintech Group brand and is not available to purchase from any other manufacturer.

## Selected Validation Data



Non-treated HEK-293 cells, phosphatase inhibitor treated HEK-293 cells and λ phosphatase treated HEK-293 cells were subjected to SDS PAGE followed by western blot with 80706-3-RR (Phospho-c-SRC (Ser17) antibody) at dilution of 1:2000 incubated at room temperature for 1.5 hours. The membrane was stripped and re-blotted with Beta Actin (66009-1-Ig) antibody as a loading control. This data was developed using the same antibody clone with 80706-3-

