

For Research Use Only

Beta Tubulin Recombinant antibody, PBS Only

Catalog Number: 80713-1-PBS

Featured Product



Basic Information

Catalog Number:

80713-1-PBS

Size:

100ug, Concentration: 1mg/ml by
Nanodrop;

Source:

Rabbit

Isotype:

IgG

Immunogen Catalog Number:

AG0117

GenBank Accession Number:

BC000748

GeneID (NCBI):

10381

UNIPROT ID:

Q13509

Full Name:

tubulin, beta 3

Calculated MW:

450 aa, 50 kDa

Observed MW:

50-55 kDa

Purification Method:

Protein A purification

CloneNo.:

2013

Applications

Tested Applications:

WB, IHC, IF/ICC, IF-P, FC (Intra), IP, Indirect ELISA

Species Specificity:

human, mouse, rat, zebrafish

Background Information

There are five tubulins in human cells: alpha, beta, gamma, delta, and epsilon. Tubulins are conserved across species. They form heterodimers, which multimerize to form a microtubule filament. An alpha and beta tubulin heterodimer is the basic structural unit of microtubules. The heterodimer does not come apart, once formed. The alpha and beta tubulins, which are each about 55 kDa MW, are homologous but not identical. Alpha, beta, and gamma tubulins have all been used as loading controls. Tubulin expression may vary according to resistance to antimicrobial and antimetabolic drugs.

Storage

Storage:

Store at -80°C.

Storage Buffer:

PBS Only

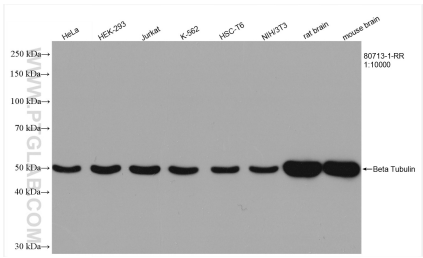
For technical support and original validation data for this product please contact:

T: 1 (888) 4PTGLAB (1-888-478-4522) (toll free
in USA), or 1(312) 455-8498 (outside USA)

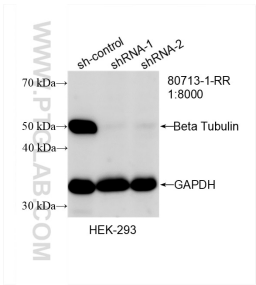
E: proteintech@ptglab.com
W: ptglab.com

This product is exclusively available under Proteintech Group brand and is not available to purchase from any other manufacturer.

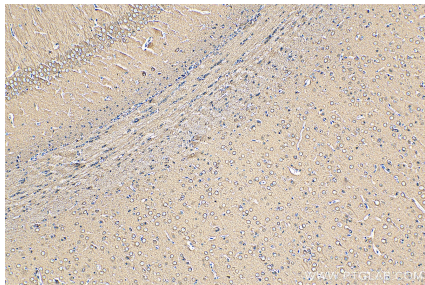
Selected Validation Data



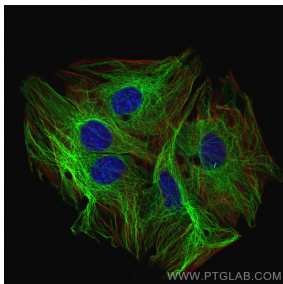
Various lysates were subjected to SDS PAGE followed by western blot with 80713-1-RR (Beta Tubulin antibody) at dilution of 1:10000 incubated at room temperature for 1.5 hours. This data was developed using the same antibody clone with 80713-1-PBS in a different storage buffer formulation.



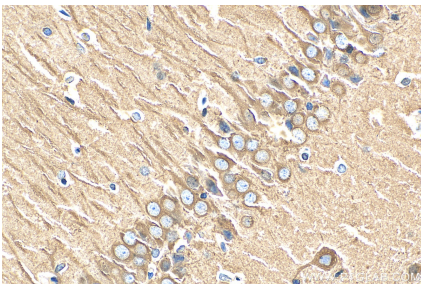
WB result of Beta Tubulin antibody (80713-1-RR; 1:8000; incubated at room temperature for 1.5 hours) with sh-Control and sh-Beta Tubulin transfected HEK-293 cells. This data was developed using the same antibody clone with 80713-1-PBS in a different storage buffer formulation.



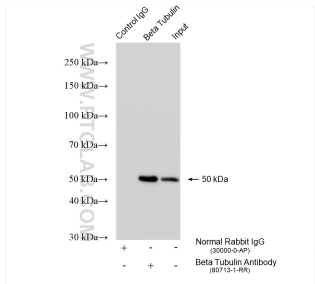
Immunohistochemical analysis of paraffin-embedded rat brain tissue slide using 80713-1-RR (Beta Tubulin antibody) at dilution of 1:1000 (under 10x lens). Heat mediated antigen retrieval with Tris-EDTA buffer (pH 9.0). This data was developed using the same antibody clone with 80713-1-PBS in a different storage buffer formulation.



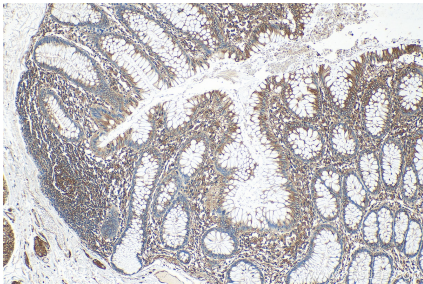
Immunofluorescent analysis of (4% PFA) fixed C2C12 cells using Beta Tubulin antibody (80713-1-RR, Clone: 2013) at dilution of 1:500 and CoraLite®488-Conjugated AffiniPure Goat Anti-Rabbit IgG(H+L), CL594-Phalloidin (red). This data was developed using the same antibody clone with 80713-1-PBS in a different storage buffer formulation.



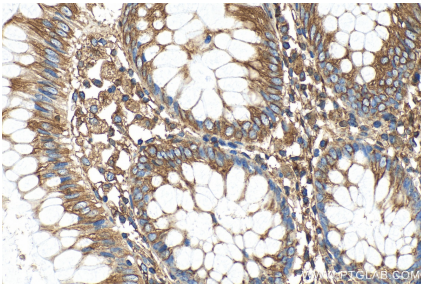
Immunohistochemical analysis of paraffin-embedded rat brain tissue slide using 80713-1-RR (Beta Tubulin antibody) at dilution of 1:1000 (under 40x lens). Heat mediated antigen retrieval with Tris-EDTA buffer (pH 9.0). This data was developed using the same antibody clone with 80713-1-PBS in a different storage buffer formulation.



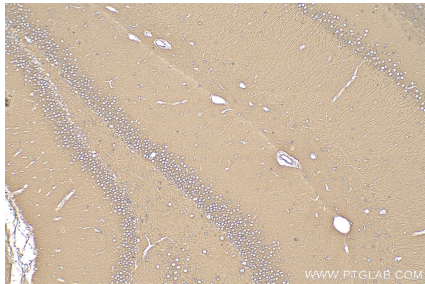
IP result of anti-Beta Tubulin (IP:80713-1-RR, 4ug; Detection:80713-1-RR 1:10000) with HEK-293 cell lysate 1610 ug. This data was developed using the same antibody clone with 80713-1-PBS in a different storage buffer formulation.



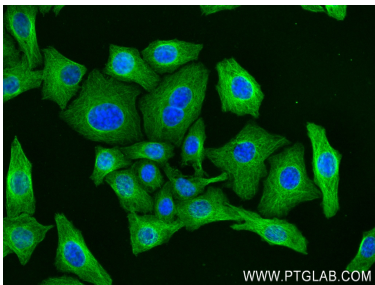
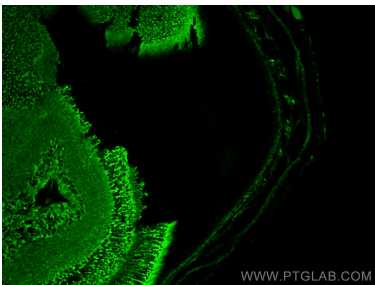
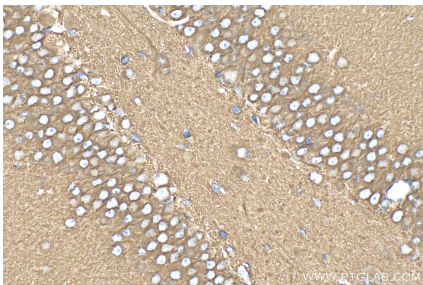
Immunohistochemical analysis of paraffin-embedded human colon tissue slide using 80713-1-RR (Beta Tubulin antibody) at dilution of 1:1000 (under 10x lens). Heat mediated antigen retrieval with Tris-EDTA buffer (pH 9.0). This data was developed using the same antibody clone with 80713-1-PBS in a different storage buffer formulation.



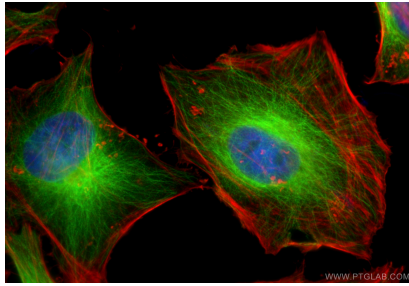
Immunohistochemical analysis of paraffin-embedded human colon tissue slide using 80713-1-RR (Beta Tubulin antibody) at dilution of 1:1000 (under 40x lens). Heat mediated antigen retrieval with Tris-EDTA buffer (pH 9.0). This data was developed using the same antibody clone with 80713-1-PBS in a different storage buffer formulation.



Immunohistochemical analysis of paraffin-embedded rat brain tissue slide using 80713-1-RR (Beta Tubulin antibody) at dilution of 1:1000 (under 10x lens). Heat mediated antigen retrieval with Tris-EDTA buffer (pH 9.0). This data was developed using the same antibody clone with 80713-1-PBS in a different storage buffer formulation.

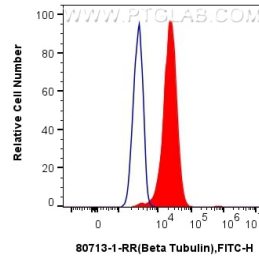


Immunohistochemical analysis of paraffin-embedded rat brain tissue slide using 80713-1-RR (Beta Tubulin antibody) at dilution of 1:1000 (under 40x lens). Heat mediated antigen retrieval with Tris-EDTA buffer (pH 9.0). This data was developed using the same antibody clone with 80713-1-PBS in a different storage buffer formulation.



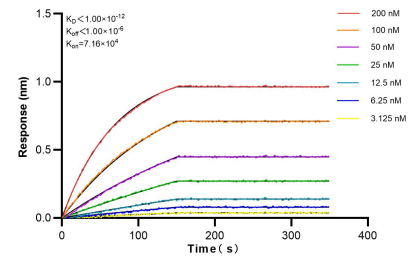
Immunofluorescent analysis of (4% PFA) fixed HeLa cells using Beta Tubulin antibody (80713-1-RR, Clone: 2013) at dilution of 1:200 and Multi-rAb Coralite® Plus 488-Goat Anti-Rabbit Recombinant Secondary Antibody (H+L) (RGAR002), CL594-phalloidin (red). This data was developed using the same antibody clone with 80713-1-PBS in a different storage buffer formulation.

Immunofluorescent analysis of (4% PFA) fixed paraffin-embedded mouse eye tissue using Beta Tubulin antibody (80713-1-RR, Clone: 2013) at dilution of 1:200 and Coralite®488-Conjugated Goat Anti-Rabbit IgG(H+L) (SA00013-2). Heat mediated antigen retrieval with Tris-EDTA buffer (pH 9.0). This data was developed using the same antibody clone with 80713-1-PBS in a different storage buffer formulation.



1x10⁶ HEK-293 cells were intracellularly stained with 0.2 ug Beta Tubulin Recombinant antibody (80713-1-RR, Clone:2013) and Coralite®488-Conjugated AffiniPure Goat Anti-Rabbit IgG(H+L) (SA00013-2)(red), or 0.2 ug Isotype Control (blue). Cells were fixed with 4% PFA and permeabilized with Flow Cytometry Perm Buffer (PF00011-C). This data was developed using the same antibody clone with 80713-1-PBS in a different storage buffer formulation.

Immunofluorescent analysis of (4% PFA) fixed HepG2 cells using Beta Tubulin antibody (80713-1-RR, Clone: 2013) at dilution of 1:250 and Coralite®488-Conjugated AffiniPure Goat Anti-Rabbit IgG(H+L) (SA00013-2). This data was developed using the same antibody clone with 80713-1-PBS in a different storage buffer formulation.



Biolayer Interferometry (BLI) kinetic assays of 80713-1-RR against Human Beta Tubulin were performed. The affinity constant is below 1 pM.