

For Research Use Only

ANGPTL4 Recombinant monoclonal antibody, PBS Only (Detector)

Catalog Number: 80738-2-PBS



Basic Information

Catalog Number: 80738-2-PBS	GenBank Accession Number: NM_139314.2	Purification Method: Protein A purification
Size: 100ug , Concentration: 1 mg/ml by Nanodrop;	GeneID (NCBI): 51129	CloneNo.: 252229C1
Source: Rabbit	UNIPROT ID: Q9BY76-1	
Isotype: IgG	Full Name: angiopoietin-like 4	
Immunogen Catalog Number: EG5329	Calculated MW: 45 kDa	

Applications

Tested Applications:
Cytometric bead array, Sandwich ELISA, Indirect ELISA

Species Specificity:
human

Product Information

80738-2-PBS targets ANGPTL4 as part of a matched antibody pair:

MP02878-1: 80738-3-PBS capture and 80738-2-PBS detection (validated in Cytometric bead array)

MP02878-2: 80738-4-PBS capture and 80738-2-PBS detection (validated in Sandwich ELISA)

Unconjugated rabbit recombinant monoclonal antibody in PBS only (BSA and azide free) storage buffer at a concentration of 1 mg/mL, ready for conjugation. Created using Proteintech's proprietary in-house recombinant technology. Recombinant production enables unrivalled batch-to-batch consistency, easy scale-up, and future security of supply.

This conjugation ready format makes antibodies ideal for use in many applications including: ELISAs, multiplex assays requiring matched pairs, mass cytometry, and multiplex imaging applications. Antibody use should be optimized by the end user for each application and assay.

Storage

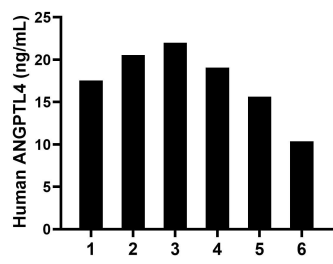
Storage:
Store at -80°C.

Storage Buffer:
PBS only, pH7.3

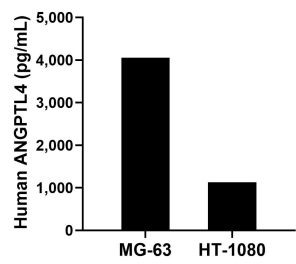
For technical support and original validation data for this product please contact:
T: 1 (888) 4PTGLAB (1-888-478-4522) (toll free in USA), or 1(312) 455-8498 (outside USA)
E: proteintech@ptglab.com
W: ptglab.com

This product is exclusively available under Proteintech Group brand and is not available to purchase from any other manufacturer.

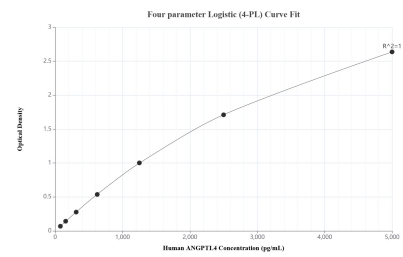
Selected Validation Data



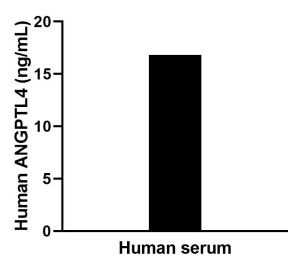
Plasma of six individual healthy human donors was measured. The ANGPTL4 concentration of detected samples was determined to be 17.5 ng/mL with a range of 10.4-22.0 ng/mL.



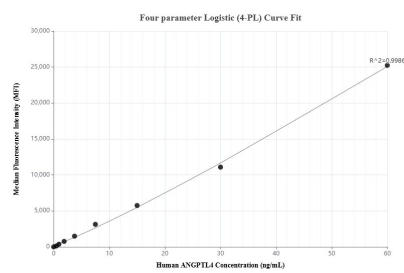
The mean ANGPTL4 concentration was determined to be 4,053.3 pg/mL in MG-63 cell extract based on a 1.2 mg/mL extract load and 1,130.7 ng/mL in HT-1080 cell extract based on a 1.2 mg/mL extract load.



Sandwich ELISA standard curve of MP02878-2, Human ANGPTL4 Recombinant Matched Antibody Pair - PBS only. 80738-4-PBS was coated to a plate as the capture antibody and incubated with serial dilutions of standard Eg5329. 80738-2-PBS was HRP conjugated as the detection antibody. Range: 78.1-5000 pg/mL.



The mean ANGPTL4 concentration was determined to be 17.0 ng/mL in human serum.



Cytometric bead array standard curve of MP02878-1, ANGPTL4 Recombinant Matched Antibody Pair, PBS Only. Capture antibody: 80738-3-PBS. Detection antibody: 80738-2-PBS. Standard: Eg5329. Range: 0.469-60 ng/mL.