

For Research Use Only

KEAP1 Recombinant antibody

Catalog Number: 80744-1-RR

Featured Product

1 Publications



Basic Information

| | | |
|---|---|--|
| Catalog Number: 80744-1-RR | GenBank Accession Number: BC002930 | Purification Method: Protein A purification |
| Size: 100ul , Concentration: 1000 µg/ml by Nanodrop; | GeneID (NCBI): 9817 | CloneNo.: 5018 |
| Source: Rabbit | Full Name: kelch-like ECH-associated protein 1 | Recommended Dilutions: WB 1:2000-1:10000 IHC 1:500-1:2000 IF 1:500-1:2000 |
| Isotype: IgG | Calculated MW: 624 aa, 70 kDa | |
| Immunogen Catalog Number: AG0779 | Observed MW: 55~70 kDa | |

Applications

Tested Applications:
IF, IHC, WB, ELISA

Cited Applications:
WB

Species Specificity:
Human, mouse , rat

Note-IHC: suggested antigen retrieval with TE buffer pH 9.0; (*) Alternatively, antigen retrieval may be performed with citrate buffer pH 6.0

Positive Controls:

WB : Jurkat cells, HEK-293 cells, MCF-7 cells, HeLa cells, K-562 cells, NIH/3T3 cells, RAW 264.7 cells, 4T1 cells, HSC-T6 cells

IHC : human lung cancer tissue,

IF : HepG2 cells, HeLa cells

Background Information

Notable Publications

| Author | Pubmed ID | Journal | Application |
|--------------|-----------|----------------------|-------------|
| Yi-Chuang Xu | 37759967 | Antioxidants (Basel) | WB |

Storage

Storage:

Store at -20°C. Stable for one year after shipment.

Storage Buffer:

PBS with 0.02% sodium azide and 50% glycerol pH 7.3.

Aliquoting is unnecessary for -20°C storage

*** 20ul sizes contain 0.1% BSA

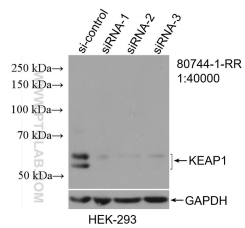
For technical support and original validation data for this product please contact:

T: 1 (888) 4PTGLAB (1-888-478-4522) (toll free in USA), or 1(312) 455-8498 (outside USA)

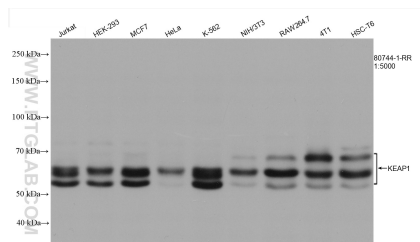
E: proteintech@ptglab.com
W: ptglab.com

This product is exclusively available under Proteintech Group brand and is not available to purchase from any other manufacturer.

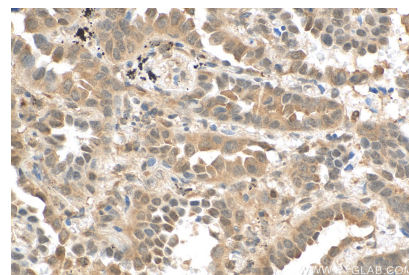
Selected Validation Data



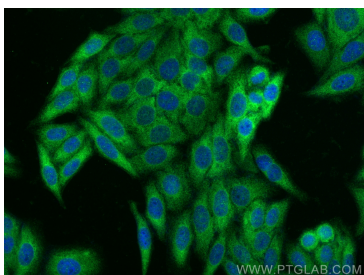
WB result of KEAP1 antibody (80744-1-RR; 1:40000; incubated at room temperature for 1.5 hours) with sh-Control and sh-KEAP1 transfected HEK-293 cells.



Various lysates were subjected to SDS PAGE followed by western blot with 80744-1-RR (KEAP1 antibody) at dilution of 1:5000 incubated at room temperature for 1.5 hours.



Immunohistochemical analysis of paraffin-embedded human lung cancer tissue slide using 80744-1-RR (KEAP1 antibody) at dilution of 1:1000 (under 40x lens). Heat mediated antigen retrieval with Tris-EDTA buffer (pH 9.0).



Immunofluorescent analysis of (-20°C Ethanol) fixed HepG2 cells using KEAP1 antibody (80744-1-RR, Clone: 5O18) at dilution of 1:1000 and CoraLite®488-Conjugated AffiniPure Goat Anti-Rabbit IgG(H+L).