

For Research Use Only

PAX8 Recombinant antibody

Catalog Number: 80756-1-RR



Basic Information

Catalog Number: 80756-1-RR	GenBank Accession Number: BC001060	Purification Method: Protein A purification
Size: 100ul , Concentration: 1000 µg/ml by Nanodrop;	GeneID (NCBI): 7849	CloneNo.: 6B14
Source: Rabbit	Full Name: paired box 8	Recommended Dilutions: WB 1:5000-1:50000 IHC 1:5000-1:20000 IF 1:650-1:2600
Isotype: IgG	Calculated MW: 48 kDa	
Immunogen Catalog Number: AG0306	Observed MW: 48 kDa, 58 kDa	

Applications

Tested Applications:

IF, IHC, WB, ELISA

Species Specificity:

Human, mouse

Note-IHC: suggested antigen retrieval with TE buffer pH 9.0; (*) Alternatively, antigen retrieval may be performed with citrate buffer pH 6.0

Positive Controls:

WB : SKOV-3 cells,

IHC : human ovary tumor tissue, mouse kidney tissue, human renal cell carcinoma tissue, human thyroid cancer tissue

IF : SKOV-3 cells,

Background Information

PAX8 is a member of the paired box (PAX) family of transcription factors, typically containing a paired box domain and a paired-type homeodomain. It is expressed during organogenesis of the thyroid gland, kidney and Mullerian system. It is thought to regulate the expression of Wilms tumor suppressor (WT1) gene and mutations in PAX8 have been associated with Wilms tumor cells, thyroid and ovarian carcinomas. PAX8 is a useful marker in distinguishing ovarian carcinomas from mammary carcinomas (PMID: 18724243). PAX8 is expressed in a high percentage of ovarian serous, endometrioid, and clear cell carcinomas, but only rarely in primary ovarian mucinous adenocarcinoma.

Storage

Storage:

Store at -20°C. Stable for one year after shipment.

Storage Buffer:

PBS with 0.02% sodium azide and 50% glycerol pH 7.3.

Aliquoting is unnecessary for -20°C storage

*** 20ul sizes contain 0.1% BSA

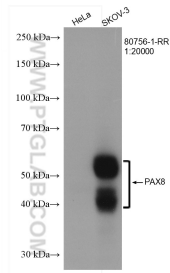
For technical support and original validation data for this product please contact:

T: 1 (888) 4PTGLAB (1-888-478-4522) (toll free in USA), or 1(312) 455-8498 (outside USA)

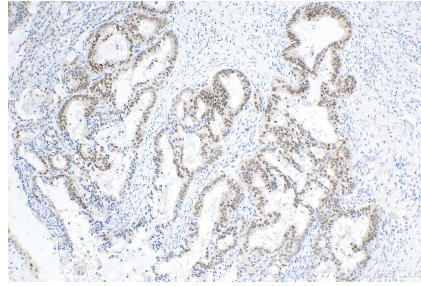
E: proteintech@ptglab.com
W: ptglab.com

This product is exclusively available under Proteintech Group brand and is not available to purchase from any other manufacturer.

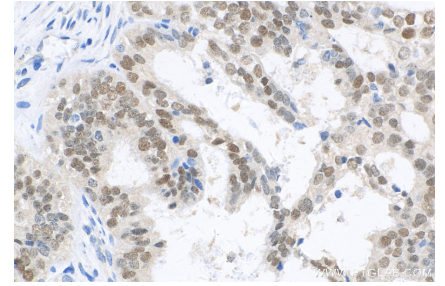
Selected Validation Data



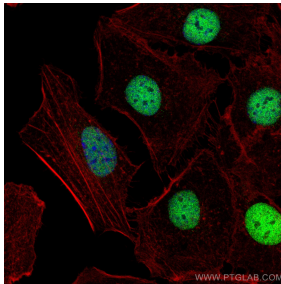
Various lysates were subjected to SDS PAGE followed by western blot with 80756-1-RR (PAX8 antibody) at dilution of 1:20000 incubated at room temperature for 1.5 hours.



Immunohistochemical analysis of paraffin-embedded human ovary tumor tissue slide using 80756-1-RR (PAX8 antibody) at dilution of 1:8300 (under 10x lens). Heat mediated antigen retrieval with Tris-EDTA buffer (pH 9.0).



Immunohistochemical analysis of paraffin-embedded human ovary tumor tissue slide using 80756-1-RR (PAX8 antibody) at dilution of 1:8300 (under 40x lens). Heat mediated antigen retrieval with Tris-EDTA buffer (pH 9.0).



Immunofluorescent analysis of (4% PFA) fixed SKOV-3 cells using PAX8 antibody (80756-1-RR, Clone: 6B14) at dilution of 1:1300 and CoraLite®488-Conjugated AffiniPure Goat Anti-Rabbit IgG(H+L), CL594-Phalloidin (red).