

For Research Use Only

# Alpha Tubulin Recombinant antibody

Catalog Number: 80762-1-RR

Featured Product

6 Publications



## Basic Information

Catalog Number:

80762-1-RR

Size:

100ul, Concentration: 1000 ug/ml by Nanodrop;

Source:

Rabbit

Isotype:

IgG

Immunogen Catalog Number:

AG18034

GenBank Accession Number:

BC009314

GeneID (NCBI):

10376

UNIPROT ID:

P68363

Full Name:

tubulin, alpha 1b

Calculated MW:

50 kDa

Observed MW:

50-55 kDa

Purification Method:

Protein A purification

CloneNo.:

1G7

Recommended Dilutions:

WB 1:5000-1:50000

IHC 1:1000-1:4000

IF-P 1:200-1:800

IF-Fro 1:200-1:800

IF/ICC 1:500-1:2000

## Applications

Tested Applications:

WB, IHC, IF/ICC, IF-P, IF-Fro, ELISA

Cited Applications:

WB, IF

Species Specificity:

human, mouse, rat

Cited Species:

human, mouse

**Note-IHC: suggested antigen retrieval with TE buffer pH 9.0; (\*) Alternatively, antigen retrieval may be performed with citrate buffer pH 6.0**

Positive Controls:

**WB** : HeLa cells, HEK-293 cells, Jurkat cells, K-562 cells, HSC-T6 cells, NIH/3T3 cells, rat brain, mouse brain

**IHC** : human skin cancer tissue, mouse brain tissue

**IF-P** : mouse testis tissue,

**IF-Fro** : mouse testis tissue,

**IF/ICC** : C2C12 cells, HeLa cells

## Background Information

There are five tubulins in human cells: alpha, beta, gamma, delta, and epsilon. Tubulins are conserved across species. They form heterodimers, which multimerize to form a microtubule filament. An alpha and beta tubulin heterodimer is the basic structural unit of microtubules. The heterodimer does not come apart once formed. The alpha and beta tubulins, which are each about 55 kDa MW, are homologous but not identical. Alpha tubulin is useful for scientists across fields as an internal control due to its high, ubiquitous expression pattern.

## Notable Publications

Author	Pubmed ID	Journal	Application
Danjie Liu	35859853	Dose Response	WB
QiuHong Jiang	39428044	Exp Neurol	WB
Yan Shi	38786094	Cells	WB

## Storage

Storage:

Store at -20°C. Stable for one year after shipment.

Storage Buffer:

PBS with 0.02% sodium azide and 50% glycerol, pH7.3

Aliquoting is unnecessary for -20°C storage

\*\*\* 20ul sizes contain 0.1% BSA

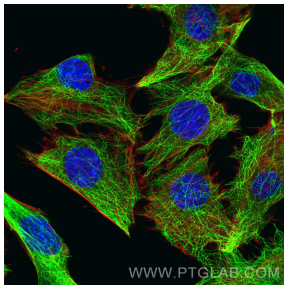
For technical support and original validation data for this product please contact:

T: 1 (888) 4PTGLAB (1-888-478-4522) (toll free in USA), or 1(312) 455-8498 (outside USA)

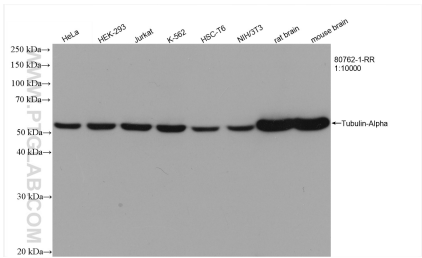
E: [proteintech@ptglab.com](mailto:proteintech@ptglab.com)  
W: [ptglab.com](http://ptglab.com)

This product is exclusively available under Proteintech Group brand and is not available to purchase from any other manufacturer.

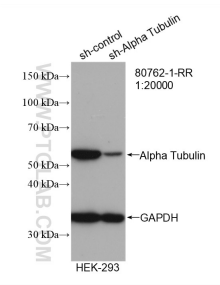
Selected Validation Data



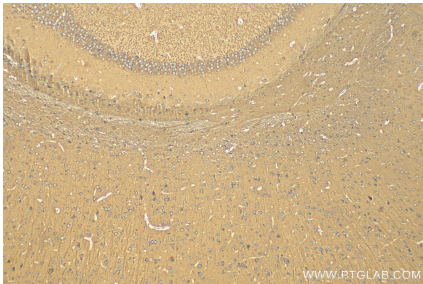
Immunofluorescent analysis of (4% PFA) fixed C2C12 cells using Alpha Tubulin antibody (80762-1-RR, Clone: 1G7 ) at dilution of 1:1000 and CoraLite@488-Conjugated AffiniPure Goat Anti-Rabbit IgG(H+L), CL594-Phalloidin (red).



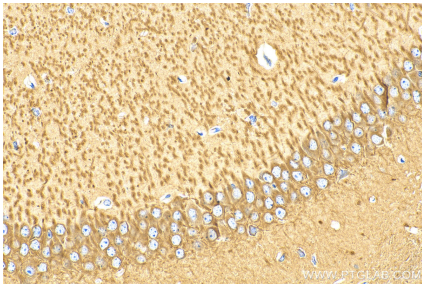
Various lysates were subjected to SDS PAGE followed by western blot with 80762-1-RR (Tubulin-Alpha antibody) at dilution of 1:10000 incubated at room temperature for 1.5 hours.



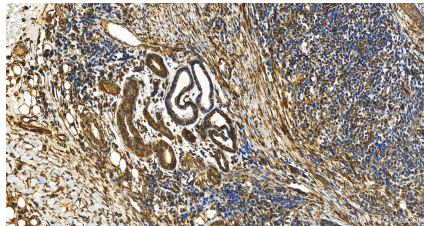
WB result of Alpha Tubulin antibody (80762-1-RR; 1:20000; incubated at room temperature for 1.5 hours) with sh-Control and sh-Alpha Tubulin transfected HEK-293 cells.



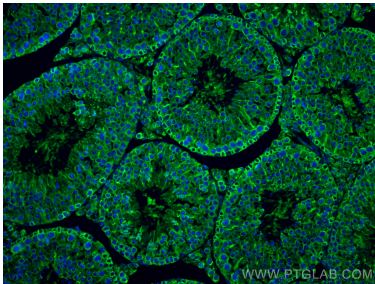
Immunohistochemical analysis of paraffin-embedded mouse brain tissue slide using 80762-1-RR (Alpha Tubulin antibody) at dilution of 1:1000 (under 10x lens). Heat mediated antigen retrieval with Tris-EDTA buffer (pH 9.0).



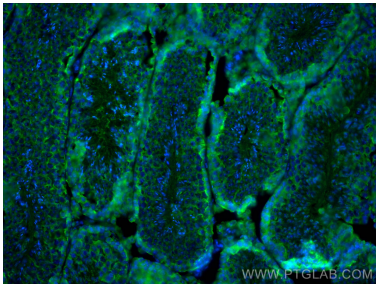
Immunohistochemical analysis of paraffin-embedded mouse brain tissue slide using 80762-1-RR (Alpha Tubulin antibody) at dilution of 1:1000 (under 40x lens). Heat mediated antigen retrieval with Tris-EDTA buffer (pH 9.0).



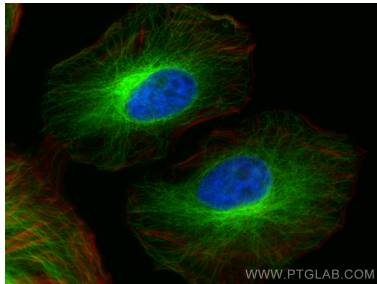
Immunohistochemical analysis of paraffin-embedded skin cancer slide using 80762-1-RR (Alpha Tubulin antibody) at dilution of 1:2000 (under 20x lens). Heat mediated antigen retrieval with Tris-EDTA buffer (pH 9.0).



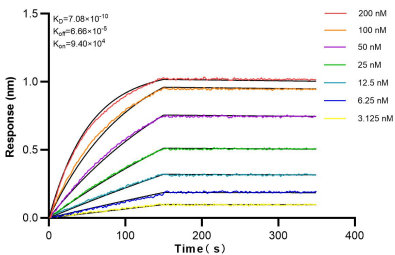
Immunofluorescent analysis of (4% PFA) fixed paraffin-embedded mouse testis tissue using Alpha Tubulin antibody (80762-1-RR, Clone: 1G7 ) at dilution of 1:400 and CoraLite@488-Conjugated AffiniPure Goat Anti-Rabbit IgG(H+L) (SA00013-2). Heat mediated antigen retrieval with Tris-EDTA buffer (pH 9.0).



Immunofluorescent analysis of (4% PFA) fixed frozen OCT-embedded mouse testis tissue using Alpha Tubulin antibody (80762-1-RR, Clone: 1G7 ) at dilution of 1:400 and CoraLite@488-Conjugated AffiniPure Goat Anti-Rabbit IgG(H+L) (SA00013-2).Heat mediated antigen retrieval with Sodium Citrate buffer (pH 6.0).



Immunofluorescent analysis of (4% PFA) fixed HeLa cells using Alpha Tubulin antibody (80762-1-RR, Clone: 1G7 ) at dilution of 1:400 and CoraLite@488-Conjugated Goat Anti-Rabbit IgG(H+L) (SA00013-2), CL594-Phalloidin (red).



Biolayer interferometry (BLI) kinetic assays of 80762-1-RR against Human Alpha Tubulin were performed. The affinity constant is 0.708 nM.