

For Research Use Only

# CD31/PECAM-1 Recombinant antibody, PBS Only (Capture)

Catalog Number: 80773-6-PBS



## Basic Information

<b>Catalog Number:</b> 80773-6-PBS	<b>GenBank Accession Number:</b> NM_000442.5	<b>Purification Method:</b> Protein A purification
<b>Size:</b> 100ug, Concentration: 1 mg/ml by Nanodrop;	<b>GeneID (NCBI):</b> 5175	<b>CloneNo.:</b> 251101A10
<b>Source:</b> Rabbit	<b>ENSEMBL Gene ID:</b> ENSG00000261371	
<b>Isotype:</b> IgG	<b>UNIPROT ID:</b> P16284-1	
<b>Immunogen Catalog Number:</b> EG4658	<b>Full Name:</b> platelet/endothelial cell adhesion molecule	
	<b>Calculated MW:</b> 83 kDa	

## Applications

**Tested Applications:**  
Sandwich ELISA, Indirect ELISA, Sample test

**Species Specificity:**  
human

## Product Information

80773-6-PBS targets CD31/PECAM-1 as part of a matched antibody pair:

MP02437-2: 80773-6-PBS capture and 80773-5-PBS detection (validated in Sandwich ELISA)

Unconjugated rabbit recombinant monoclonal antibody in PBS only (BSA and azide free) storage buffer at a concentration of 1 mg/mL, ready for conjugation. Created using Proteintech's proprietary in-house recombinant technology. Recombinant production enables unrivalled batch-to-batch consistency, easy scale-up, and future security of supply.

This conjugation ready format makes antibodies ideal for use in many applications including: ELISAs, multiplex assays requiring matched pairs, mass cytometry, and multiplex imaging applications. Antibody use should be optimized by the end user for each application and assay.

## Storage

**Storage:**  
Store at -80°C.

**Storage Buffer:**  
PBS only, pH7.3

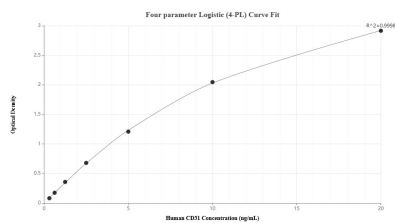
For technical support and original validation data for this product please contact:

T: 1 (888) 4PTGLAB (1-888-478-4522) (toll free  
in USA), or 1(312) 455-8498 (outside USA)

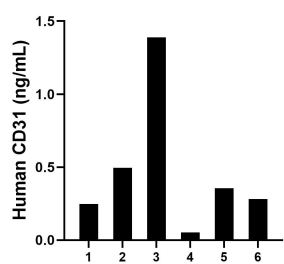
E: [proteintech@ptglab.com](mailto:proteintech@ptglab.com)  
W: [ptglab.com](http://ptglab.com)

This product is exclusively available under Proteintech Group brand and is not available to purchase from any other manufacturer.

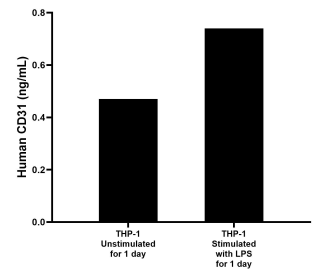
## Selected Validation Data



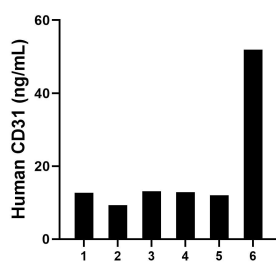
Sandwich ELISA standard curve of MP02437-2, Human CD31 Recombinant Matched Antibody Pair - PBS only. 80773-6-PBS was coated to a plate as the capture antibody and incubated with serial dilutions of standard Eg4658. 80773-5-PBS was HRP conjugated as the detection antibody. Range: 0.313-20 ng/mL



Urine of six individual healthy human donors was measured. The human CD31 concentration of detected samples was determined to be 0.47 ng/mL with a range of 0.05 - 1.39 ng/mL.



THP-1 cells ( $3 \times 10^6$  cells/mL) were cultured in RPMI with 10% fetal bovine serum, 50  $\mu$ M  $\beta$ -mercaptoethanol, 2 mM L-glutamine, 100 U/mL penicillin, and 100  $\mu$ g/mL streptomycin sulfate. The cells were cultured unstimulated or stimulated with 1  $\mu$ g/mL LPS for 1 day. Aliquots of the cell culture supernatants were removed, assayed for levels of CD31, measured 0.47 ng/mL and 0.74 ng/mL respectively.



Plasma of six individual healthy human donors was measured. The human CD31 concentration of detected samples was determined to be 18.66 ng/mL with a range of 9.29 - 51.94 ng/mL.