

For Research Use Only

TGFBI/BIGH3 Recombinant monoclonal antibody

Catalog Number: 80805-3-RR



Basic Information

Catalog Number: 80805-3-RR	GenBank Accession Number: NM_000358.3	Purification Method: Protein A purification
Size: 100ul , Concentration: 1000 µg/ml by Nanodrop;	GeneID (NCBI): 7045	CloneNo.: 243108H4
Source: Rabbit	ENSEMBL Gene ID: ENSG00000120708	Recommended Dilutions: WB: 1:2000-1:10000
Isotype: IgG	UNIPROT ID: Q15582	
Immunogen Catalog Number: EG1233	Full Name: transforming growth factor, beta-induced, 68kDa	
	Calculated MW: 75kDa	
	Observed MW: 68 kDa	

Applications

Tested Applications: WB, ELISA	Positive Controls: WB : mouse eye tissue, HeLa cells, rat eye tissue, A549 cells, U-87 MG cells, MG-63 cells
Species Specificity: human, mouse, rat	

Background Information

TGFBI, also named as BIGH3, Kerato-epithelin and RGD-CAP, binds to type I, II, and IV collagens. TGFBI is an adhesion protein which may play an important role in cell-collagen interactions. In cartilage, it may be involved in endochondral bone formation. TGFBI is an extracellular matrix adaptor protein, it has been reported to be differentially expressed in transformed tissues. TGFBI is a predictive factor of the response to chemotherapy, and suggest the use of TGFBI-derived peptides as possible therapeutic adjuvants for the enhancement of responses to chemotherapy. (PMID:20509890) Defects in TGFBI are the cause of epithelial basement membrane corneal dystrophy (EBMD). Defects in TGFBI are the cause of corneal dystrophy Groenouw type 1 (CDGG1). Defects in TGFBI are the cause of corneal dystrophy lattice type 1 (CDL1). Defects in TGFBI are a cause of corneal dystrophy Thiel-Behnke type (CTDB). Defects in TGFBI are the cause of Reis-Buecklers corneal dystrophy (CDRB). Defects in TGFBI are the cause of lattice corneal dystrophy type 3A (CDL3A). Defects in TGFBI are the cause of Avellino corneal dystrophy (ACD).

Storage

Storage:
Store at -20°C. Stable for one year after shipment.
Storage Buffer:
PBS with 0.02% sodium azide and 50% glycerol, pH7.3
Aliquoting is unnecessary for -20°C storage

*** 20ul sizes contain 0.1% BSA

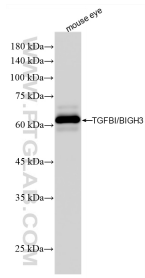
For technical support and original validation data for this product please contact:

T: 1 (888) 4PTGLAB (1-888-478-4522) (toll free in USA), or 1(312) 455-8498 (outside USA)

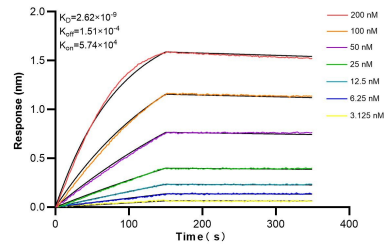
E: proteintech@ptglab.com
W: ptglab.com

This product is exclusively available under Proteintech Group brand and is not available to purchase from any other manufacturer.

Selected Validation Data



mouse eye tissue were subjected to SDS PAGE followed by western blot with 80805-3-RR (beta IG-H3/TGFB1 antibody) at dilution of 1:5000 incubated at room temperature for 1.5 hours.



Biolayer interferometry (BLI) kinetic assays of 80805-3-RR against Human TGFB1/BI GH3 were performed. The affinity constant is 2.62 nM.