

For Research Use Only

ALDOA Recombinant antibody

Catalog Number: 80837-1-RR

Featured Product



Basic Information

Catalog Number:

80837-1-RR

Size:

100ul, Concentration: 250 ug/ml by Nanodrop;

Source:

Rabbit

Isotype:

IgG

Immunogen Catalog Number:

AG1726

GenBank Accession Number:

BC016800

GeneID (NCBI):

226

UNIPROT ID:

P04075

Full Name:

aldolase A, fructose-bisphosphate

Calculated MW:

39 kDa

Observed MW:

35-40 kDa

Purification Method:

Protein A purification

CloneNo.:

2F4

Recommended Dilutions:

WB 1:1000-1:5000

IF/ICC 1:50-1:500

Applications

Tested Applications:

WB, IF/ICC, ELISA

Species Specificity:

Human, Mouse, Pig, rat

Positive Controls:

WB : HeLa cells, HEK-293 cells, HepG2 cells, Jurkat cells, NIH/3T3 cells, 4T1 cells, HSC-T6 cells, pig liver tissue, pig skeletal muscle tissue

IF/ICC : HeLa cells,

Background Information

ALDOA (Fructose-bisphosphate aldolase A) is also named as lung cancer antigen NY-LU-1, muscle-type aldolase, ALDA and belongs to the class I fructose-bisphosphate aldolase family. The ALDOA gene encodes a homotetrameric protein (PMID:14615364). It is found in skeletal muscle and red blood cells, and functions in glycolysis, promoting the reversible cleavage of FBP to triose phosphate, G-3-P and DHAP. ALDOA is upregulated in various cancers, including human lung squamous and renal cell carcinomas (PMID:19937139).

Storage

Storage:

Store at -20°C. Stable for one year after shipment.

Storage Buffer:

PBS with 0.02% sodium azide and 50% glycerol pH 7.3.

Aliquoting is unnecessary for -20°C storage

*** 20ul sizes contain 0.1% BSA

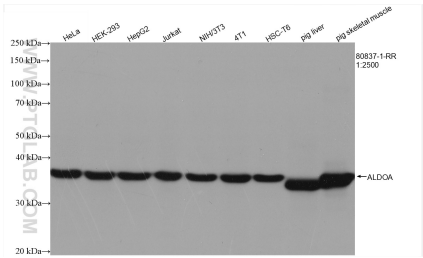
For technical support and original validation data for this product please contact:

T: 1 (888) 4PTGLAB (1-888-478-4522) (toll free in USA), or 1(312) 455-8498 (outside USA)

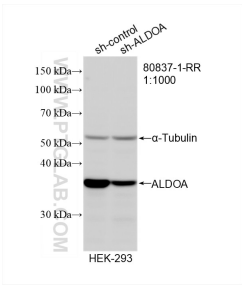
E: proteintech@ptglab.com
W: ptglab.com

This product is exclusively available under Proteintech Group brand and is not available to purchase from any other manufacturer.

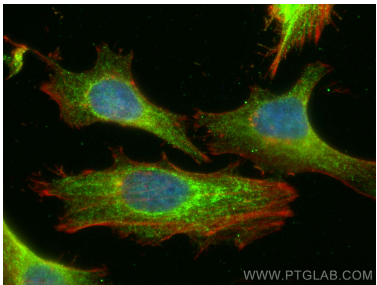
Selected Validation Data



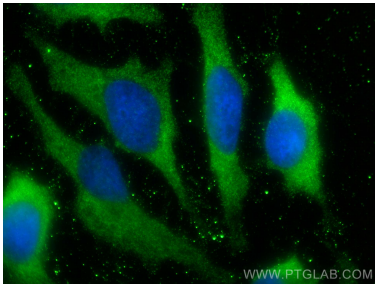
Various lysates were subjected to SDS PAGE followed by western blot with 80837-1-RR (ALDOA antibody) at dilution of 1:2500 incubated at room temperature for 1.5 hours.



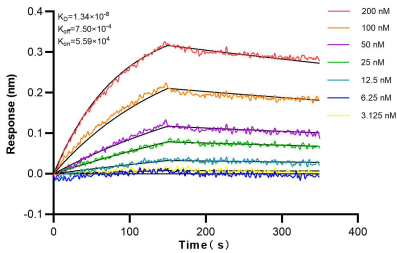
WB result of ALDOA antibody (80837-1-RR; 1:1000; incubated at room temperature for 1.5 hours) with sh-Control and sh-ALDOA transfected HEK-293 cells.



Immunofluorescent analysis of (4% PFA) fixed HeLa cells using ALDOA antibody (80837-1-RR, Clone: 2F4) at dilution of 1:200 and CoraLite® 488-Conjugated Goat Anti-Rabbit IgG(H+L), CL594-phalloidin (red).



Immunofluorescent analysis of (-20°C Methanol) fixed HeLa cells using ALDOA antibody (80837-1-RR, Clone: 2F4) at dilution of 1:200 and CoraLite® 488-Conjugated Goat Anti-Rabbit IgG(H+L).



Biolayer interferometry (BLI) kinetic assays of 80837-1-RR against Human ALDOA were performed. The affinity constant is 1.34 nM.