

For Research Use Only

LAG3 Recombinant antibody, PBS Only (Capture)

Catalog Number: 80855-6-PBS



Basic Information

Catalog Number: 80855-6-PBS	GenBank Accession Number: NM_002286	Purification Method: Protein A purification
Size: 100ug , Concentration: 1 mg/ml by Nanodrop;	GeneID (NCBI): 3902	CloneNo.: 243086F1
Source: Rabbit	UNIPROT ID: P18627	
Isotype: IgG	Full Name: lymphocyte-activation gene 3	
	Calculated MW: 57 kDa	

Applications

Tested Applications:
Sandwich ELISA, Indirect ELISA, Sample test

Species Specificity:
human

Product Information

80855-6-PBS targets LAG3 as part of a matched antibody pair:

MP02008-3: 80855-6-PBS capture and 80855-5-PBS detection (validated in Sandwich ELISA)

Unconjugated rabbit recombinant monoclonal antibody in PBS only (BSA and azide free) storage buffer at a concentration of 1 mg/mL, ready for conjugation. Created using Proteintech's proprietary in-house recombinant technology. Recombinant production enables unrivalled batch-to-batch consistency, easy scale-up, and future security of supply.

This conjugation ready format makes antibodies ideal for use in many applications including: ELISAs, multiplex assays requiring matched pairs, mass cytometry, and multiplex imaging applications. Antibody use should be optimized by the end user for each application and assay.

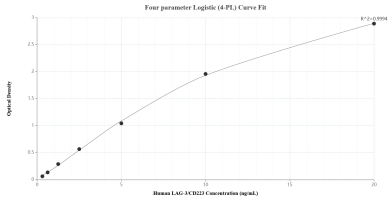
Storage

Storage:
Store at -80°C.
Storage Buffer:
PBS Only

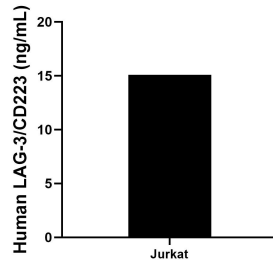
For technical support and original validation data for this product please contact:
T: 1 (888) 4PTGLAB (1-888-478-4522) (toll free in USA), or 1(312) 455-8498 (outside USA)
E: proteintech@ptglab.com
W: ptglab.com

This product is exclusively available under Proteintech Group brand and is not available to purchase from any other manufacturer.

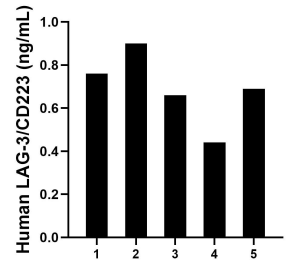
Selected Validation Data



Sandwich ELISA standard curve of MP02008-3, Human LAG-3/CD223 Recombinant Matched Antibody Pair - PBS only. 80855-6-PBS was coated to a plate as the capture antibody and incubated with serial dilutions of standard Eg31550. 80855-5-PBS was HRP conjugated as the detection antibody. Range: 0.313-20 ng/mL



The mean LAG-3/CD223 concentration was determined to be 15.08 ng/mL in Jurkat cell extract based on a 1.90 mg/mL extract load.



Serum of five individual healthy human donors was measured. The LAG-3/CD223 concentration of detected samples was determined to be 0.69 ng/mL with a range of 0.44-0.90 ng/mL.