

For Research Use Only

YTHDF1 Recombinant antibody, PBS Only (Detector)

Catalog Number: 80876-2-PBS



Basic Information

Catalog Number: 80876-2-PBS	GenBank Accession Number: BC050284	Purification Method: Protein A purification
Size: 100ug , Concentration: 1 mg/ml by Nanodrop;	GeneID (NCBI): 54915	CloneNo.: 241445B10
Source: Rabbit	UNIPROT ID: Q9BYJ9	
Isotype: IgG	Full Name: YTH domain family, member 1	
Immunogen Catalog Number: AG11509	Calculated MW: 559 aa, 61 kDa	
	Observed MW: 60-65 kDa	

Applications

Tested Applications:
WB, IF-P, FC (Intra), Cytometric bead array, Indirect ELISA

Species Specificity:
human, mouse, rat

Product Information

80876-2-PBS targets YTHDF1 as part of a matched antibody pair:

MP01146-3: 80876-4-PBS capture and 80876-2-PBS detection (validated in Cytometric bead array)

Unconjugated rabbit recombinant monoclonal antibody in PBS only (BSA and azide free) storage buffer at a concentration of 1 mg/mL, ready for conjugation. Created using Proteintech's proprietary in-house recombinant technology. Recombinant production enables unrivalled batch-to-batch consistency, easy scale-up, and future security of supply.

This conjugation ready format makes antibodies ideal for use in many applications including: ELISAs, multiplex assays requiring matched pairs, mass cytometry, and multiplex imaging applications. Antibody use should be optimized by the end user for each application and assay.

Storage

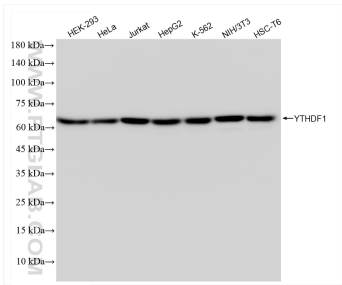
Storage:
Store at -80°C.

Storage Buffer:
PBS Only

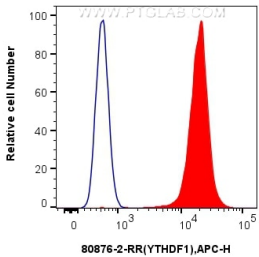
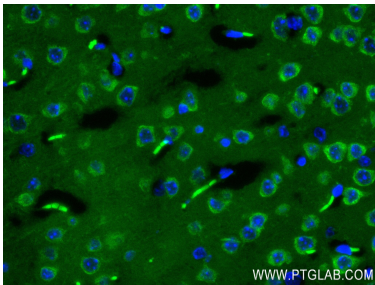
For technical support and original validation data for this product please contact:
T: 1 (888) 4PTGLAB (1-888-478-4522) (toll free in USA), or 1(312) 455-8498 (outside USA)
E: proteintech@ptglab.com
W: ptglab.com

This product is exclusively available under Proteintech Group brand and is not available to purchase from any other manufacturer.

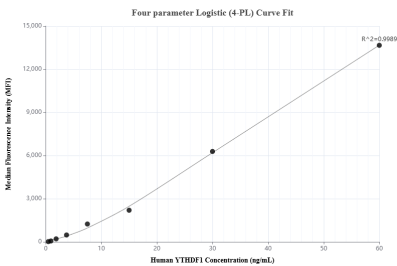
Selected Validation Data



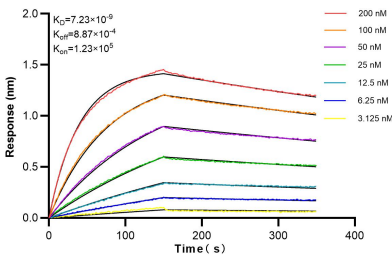
Various lysates were subjected to SDS PAGE followed by western blot with 80876-2-RR (Ag11509 antibody) at dilution of 1:10000 incubated at room temperature for 1.5 hours. This data was developed using the same antibody clone with 80876-2-PBS in a different storage buffer formulation.



1x10⁶ HEK-293 cells were intracellularly stained with 0.25 ug YTHDF1 Recombinant antibody (80876-2-RR, Clone:241445B10) and APC-Conjugated Goat Anti-Rabbit IgG(H+L)(red), or 0.25 ug Isotype Control (blue). Cells were fixed with 4% PFA and permeabilized with Flow Cytometry Perm Buffer (PF00011-C). This data was developed using the same antibody clone with 80876-2-PBS in a different storage buffer formulation.



Cytometric bead array standard curve of MP01146-3, YTHDF1 Recombinant Matched Antibody Pair, PBS Only. Capture antibody: 80876-4-PBS. Detection antibody: 80876-2-PBS. Standard: Ag11509. Range: 0.469-60 ng/mL.



Biolayer interferometry (BLI) kinetic assays of 80876-2-RR against Human YTHDF1 were performed. The affinity constant is 7.23 nM.