

For Research Use Only

YTHDF1 Recombinant antibody, PBS Only (Capture)

Catalog Number: 80876-4-PBS



Basic Information

Catalog Number: 80876-4-PBS	GenBank Accession Number: BC050284	Purification Method: Protein A purification
Size: 100ug, Concentration: 1 mg/ml by Nanodrop;	GeneID (NCBI): 54915	CloneNo.: 241445F12
Source: Rabbit	UNIPROT ID: Q9BYJ9	
Isotype: IgG	Full Name: YTH domain family, member 1	
Immunogen Catalog Number: AG11509	Calculated MW: 559 aa, 61 kDa	

Applications

Tested Applications:
Cytometric bead array, Sandwich ELISA, Indirect ELISA, Sample test

Species Specificity:
human

Product Information

80876-4-PBS targets YTHDF1 as part of a matched antibody pair:

MP01146-1: 80876-4-PBS capture and 80876-3-PBS detection (validated in Cytometric bead array)

MP01146-2: 80876-4-PBS capture and 80876-5-PBS detection (validated in Cytometric bead array)

MP01146-3: 80876-4-PBS capture and 80876-2-PBS detection (validated in Cytometric bead array)

MP01146-4: 80876-4-PBS capture and 80876-7-PBS detection (validated in Sandwich ELISA)

Unconjugated rabbit recombinant monoclonal antibody in PBS only (BSA and azide free) storage buffer at a concentration of 1 mg/mL, ready for conjugation. Created using Proteintech's proprietary in-house recombinant technology. Recombinant production enables unrivalled batch-to-batch consistency, easy scale-up, and future security of supply.

This conjugation ready format makes antibodies ideal for use in many applications including: ELISAs, multiplex assays requiring matched pairs, mass cytometry, and multiplex imaging applications. Antibody use should be optimized by the end user for each application and assay.

Storage

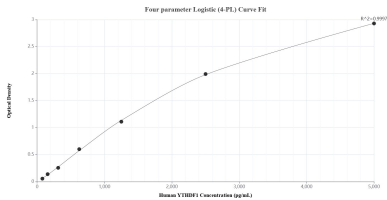
Storage:
Store at -80°C.

Storage Buffer:
PBS Only

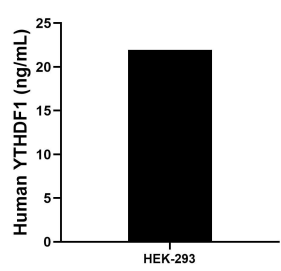
For technical support and original validation data for this product please contact:
T: 1 (888) 4PTGLAB (1-888-478-4522) (toll free in USA), or 1(312) 455-8498 (outside USA)
E: proteintech@ptglab.com
W: ptglab.com

This product is exclusively available under Proteintech Group brand and is not available to purchase from any other manufacturer.

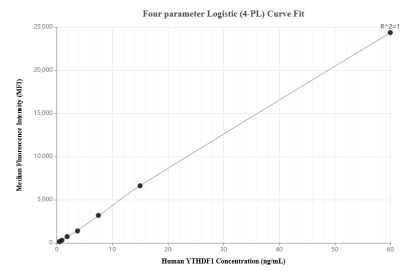
Selected Validation Data



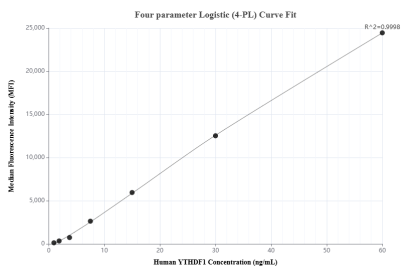
Sandwich ELISA standard curve of MP01146-4, Human YTHDF1 Recombinant Matched Antibody Pair - PBS only. 80876-4-PBS was coated to a plate as the capture antibody and incubated with serial dilutions of standard Ag11509. 80876-7-PBS was HRP conjugated as the detection antibody. Range: 78.1-5000 pg/mL.



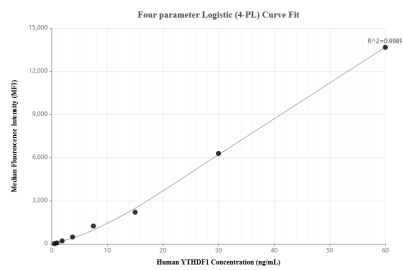
The mean YTHDF1 concentration was determined to be 22.0 ng/mL in HEK-293 cell extract based on 1.5 mg/mL extract load.



Cytometric bead array standard curve of MP01146-1, YTHDF1 Recombinant Matched Antibody Pair, PBS Only. Capture antibody: 80876-4-PBS. Detection antibody: 80876-3-PBS. Standard: Ag11509. Range: 0.469-60 ng/mL



Cytometric bead array standard curve of MP01146-2, YTHDF1 Recombinant Matched Antibody Pair, PBS Only. Capture antibody: 80876-4-PBS. Detection antibody: 80876-5-PBS. Standard: Ag11509. Range: 0.938-60 ng/mL



Cytometric bead array standard curve of MP01146-3, YTHDF1 Recombinant Matched Antibody Pair, PBS Only. Capture antibody: 80876-4-PBS. Detection antibody: 80876-2-PBS. Standard: Ag11509. Range: 0.469-60 ng/mL