

For Research Use Only

# GSDMD Recombinant antibody

Catalog Number: 80918-1-RR



## Basic Information

<b>Catalog Number:</b> 80918-1-RR	<b>GenBank Accession Number:</b> BC008904	<b>Purification Method:</b> Protein A purification
<b>Size:</b> 100ul , Concentration: 1000 µg/ml by Nanodrop;	<b>GeneID (NCBI):</b> 79792	<b>CloneNo.:</b> 2N24
<b>Source:</b> Rabbit	<b>Full Name:</b> gasdermin D	<b>Recommended Dilutions:</b> WB 1:5000-1:50000
<b>Isotype:</b> IgG	<b>Calculated MW:</b> 484 aa, 53 kDa	
<b>Immunogen Catalog Number:</b> AG14757	<b>Observed MW:</b> 50-53 kDa	

## Applications

<b>Tested Applications:</b> FC, WB, ELISA	<b>Positive Controls:</b> WB : HeLa cells, A549 cells, Jurkat cells
<b>Species Specificity:</b> Human, mouse	

## Background Information

GSDMD is a member of the gasdermin family. Members of this family appear to play a role in regulation of epithelial proliferation. GSDMD has been suggested to act as a tumor suppressor. Recently, GSDMD is identified as a new component of inflammasomes, and it is an executor of pyroptosis and required for interleukin-1 $\beta$  secretion. Cleavage of GSDMD by inflammatory caspases determines pyroptotic cell death.

## Storage

**Storage:**  
Store at -20°C. Stable for one year after shipment.  
**Storage Buffer:**  
PBS with 0.02% sodium azide and 50% glycerol pH 7.3.  
Aliquoting is unnecessary for -20°C storage

\*\*\* 20ul sizes contain 0.1% BSA

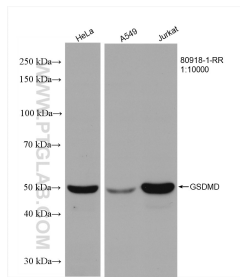
For technical support and original validation data for this product please contact:

T: 1 (888) 4PTGLAB (1-888-478-4522) (toll free  
in USA), or 1(312) 455-8498 (outside USA)

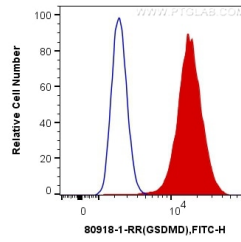
E: [proteintech@ptglab.com](mailto:proteintech@ptglab.com)  
W: [ptglab.com](http://ptglab.com)

This product is exclusively available under Proteintech Group brand and is not available to purchase from any other manufacturer.

## Selected Validation Data



Various lysates were subjected to SDS PAGE followed by western blot with 80918-1-RR (GSDMD antibody) at dilution of 1:10000 incubated at room temperature for 1.5 hours.



$1 \times 10^6$  RAW 264.7 cells were intracellularly stained with 0.4 ug Anti-Human GSDMD (80918-1-RR, Clone:2N24) and CoraLite®488-Conjugated AffiniPure Goat Anti-Rabbit IgG(H+L) at dilution 1:1000 (red), or 0.4 ug Control Antibody. Cells were fixed with 4% PFA and permeabilized with Flow Cytometry Perm Buffer (PF00011-C).