

For Research Use Only

# DDX21 Recombinant antibody, PBS Only

Catalog Number: 80932-1-PBS

Featured Product



## Basic Information

Catalog Number:

80932-1-PBS

Size:

100ug, Concentration: 1mg/ml by Nanodrop;

Source:

Rabbit

Isotype:

IgG

Immunogen Catalog Number:

AG0804

GenBank Accession Number:

BC008071

GeneID (NCBI):

9188

UNIPROT ID:

Q9NR30

Full Name:

DEAD (Asp-Glu-Ala-Asp) box polypeptide 21

Calculated MW:

87 kDa

Observed MW:

87 kDa

Purification Method:

Protein A purification

CloneNo.:

5E7

## Applications

Tested Applications:

WB, IF/ICC, Indirect ELISA

Species Specificity:

human

## Background Information

DDX21 protein belongs to DEAD box protein family which is characterized by the conserved motif Asp-Glu-Ala-Asp (DEAD). As a putative RNA helicase, DDX21 unwinds double-stranded RNA, folds single-stranded RNA and is involved in process including ribosomal RNA biogenesis, RNA editing and general transcription. Interaction of DDX21 and c-Jun was reported in ribosomal RNA processing. DDX21 exists as two isoforms, molecular weight of modified isoform one is about 87 -100 kDa, and the post-modified isoform is about 75-85 kDa.

## Storage

Storage:

Store at -80°C.

Storage Buffer:

PBS Only

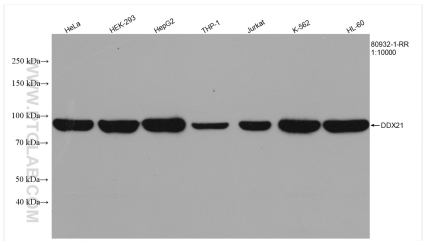
For technical support and original validation data for this product please contact:

T: 1 (888) 4PTGLAB (1-888-478-4522) (toll free in USA), or 1(312) 455-8498 (outside USA)

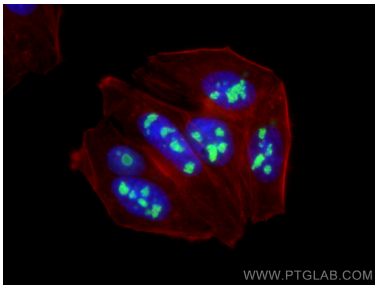
E: [proteintech@ptglab.com](mailto:proteintech@ptglab.com)  
W: [ptglab.com](http://ptglab.com)

This product is exclusively available under Proteintech Group brand and is not available to purchase from any other manufacturer.

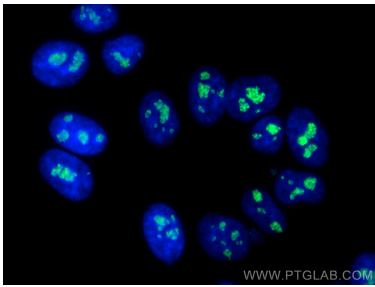
Selected Validation Data



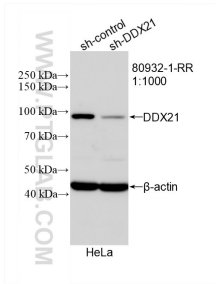
Various lysates were subjected to SDS PAGE followed by western blot with 80932-1-RR (DDX21 antibody) at dilution of 1:10000 incubated at room temperature for 1.5 hours. This data was developed using the same antibody clone with 80932-1-PBS in a different storage buffer formulation.



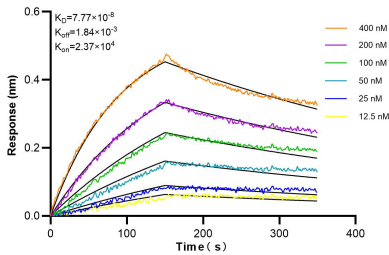
Immunofluorescent analysis of (4% PFA) fixed HepG2 cells using DDX21 antibody (80932-1-RR, Clone: 5E7 ) at dilution of 1:1000 and CoraLite®488-Conjugated AffiniPure Goat Anti-Rabbit IgG(H+L), CL594-Phalloidin (red). This data was developed using the same antibody clone with 80932-1-PBS in a different storage buffer formulation.



Immunofluorescent analysis of (4% PFA) fixed HepG2 cells using DDX21 antibody (80932-1-RR, Clone: 5E7 ) at dilution of 1:1000 and CoraLite®488-Conjugated AffiniPure Goat Anti-Rabbit IgG(H+L). This data was developed using the same antibody clone with 80932-1-PBS in a different storage buffer formulation.



WB result of DDX21 antibody (80932-1-RR; 1:1000; incubated at room temperature for 1.5 hours) with sh-Control and sh-DDX21 transfected HeLa cells. This data was developed using the same antibody clone with 80932-1-PBS in a different storage buffer formulation.



Biolayer interferometry (BLI) kinetic assays of 80932-1-RR against Human DDX21 were performed. The affinity constant is 77.7 nM.