

For Research Use Only

DDX21 Recombinant antibody

Catalog Number: 80932-1-RR



Basic Information

Catalog Number: 80932-1-RR	GenBank Accession Number: BC008071	Purification Method: Protein A purification
Size: 100ul , Concentration: 1000 µg/ml by Nanodrop;	GeneID (NCBI): 9188	CloneNo.: 5E7
Source: Rabbit	Full Name: DEAD (Asp-Glu-Ala-Asp) box polypeptide 21	Recommended Dilutions: WB 1:5000-1:50000 IF 1:500-1:2000
Isotype: IgG	Calculated MW: 87 kDa	
Immunogen Catalog Number: AG0804	Observed MW: 87 kDa	

Applications

Tested Applications:

IF, WB, ELISA

Species Specificity:

Human

Positive Controls:

WB : HeLa cells, HEK-293 cells, HepG2 cells, THP-1 cells, Jurkat cells, K-562 cells, HL-60 cells

IF : HepG2 cells,

Background Information

DDX21 protein belongs to DEAD box protein family which is characterized by the conserved motif Asp-Glu-Ala-Asp (DEAD). As a putative RNA helicase, DDX21 unwinds double-stranded RNA, folds single-stranded RNA and is involved in process including ribosomal RNA biogenesis, RNA editing and general transcription. Interaction of DDX21 and c-Jun was reported in ribosomal RNA processing. DDX21 exists as two isoforms, molecular weight of modified isoform one is about 87-100 kDa, and the post-modified isoform is about 75-85 kDa.

Storage

Storage:

Store at -20°C.

Storage Buffer:

PBS with 0.02% sodium azide and 50% glycerol pH 7.3.

Aliquoting is unnecessary for -20°C storage

***** 20ul sizes contain 0.1% BSA**

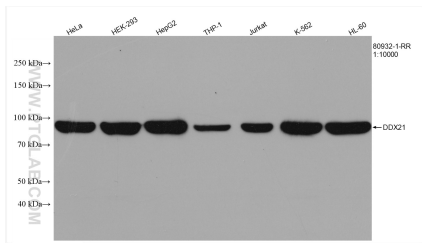
For technical support and original validation data for this product please contact:

T: 1 (888) 4PTGLAB (1-888-478-4522) (toll free
in USA), or 1(312) 455-8498 (outside USA)

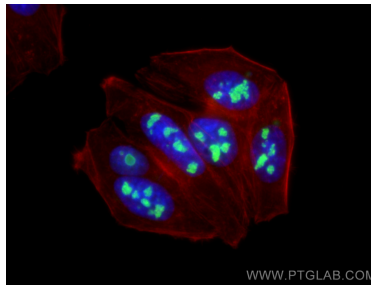
E: proteintech@ptglab.com
W: ptglab.com

This product is exclusively available under Proteintech Group brand and is not available to purchase from any other manufacturer.

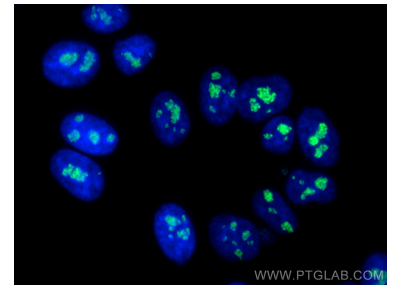
Selected Validation Data



Various lysates were subjected to SDS PAGE followed by western blot with 80932-1-RR (DDX21 antibody) at dilution of 1:10000 incubated at room temperature for 1.5 hours.



Immunofluorescent analysis of (4% PFA) fixed HepG2 cells using DDX21 antibody (80932-1-RR, Clone: 5E7) at dilution of 1:1000 and CoraLite®488-Conjugated AffiniPure Goat Anti-Rabbit IgG(H+L), CL594-Phalloidin (red).



Immunofluorescent analysis of (4% PFA) fixed HepG2 cells using DDX21 antibody (80932-1-RR, Clone: 5E7) at dilution of 1:1000 and CoraLite®488-Conjugated AffiniPure Goat Anti-Rabbit IgG(H+L).