

For Research Use Only

Ribosomal protein L4 Recombinant antibody

Catalog Number: 80959-1-RR



Basic Information

Catalog Number: 80959-1-RR	GenBank Accession Number: BC009888	Purification Method: Protein A purification
Size: 100ul , Concentration: 1000 ug/ml by Nanodrop;	GeneID (NCBI): 6124	CloneNo.: 3K6
Source: Rabbit	UNIPROT ID: P36578	Recommended Dilutions: WB 1:5000-1:50000
Isotype: IgG	Full Name: ribosomal protein L4	IP 0.5-4.0 ug for 1.0-3.0 mg of total protein lysate
Immunogen Catalog Number: AG28728	Calculated MW: 48 kDa	IHC 1:250-1:1000
	Observed MW: 48 kDa	IF/ICC 1:125-1:500

Applications

Tested Applications: WB, IHC, IF/ICC, FC (Intra), IP, ELISA	Positive Controls:
Species Specificity: human	WB : HEK-293 cells, HeLa cells, HepG2 cells, U2OS cells, Jurkat cells, K-562 cells
Note-IHC: suggested antigen retrieval with TE buffer pH 9.0; (*) Alternatively, antigen retrieval may be performed with citrate buffer pH 6.0	IP : HeLa cells,
	IHC : human stomach cancer tissue, human intrahepatic cholangiocarcinoma tissue
	IF/ICC : HepG2 cells,

Background Information

60S ribosomal protein L4 is encoded by RPL4 (or RPL1) gene. RPL4 is a component of 60S subunit of ribosome, and belongs to the L4E family. By interacting with c-Myb, RPL4 plays a important role in c-myc expression in response to growth factor and nutritional signals. Recently RPL4 was reported to be able to increase efficiency of viral recoding sequence.

Storage

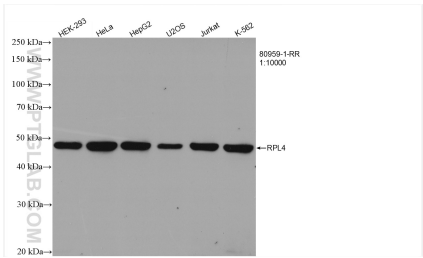
Storage:
Store at -20°C. Stable for one year after shipment.
Storage Buffer:
PBS with 0.02% sodium azide and 50% glycerol pH 7.3.
Aliquoting is unnecessary for -20°C storage

*** 20ul sizes contain 0.1% BSA

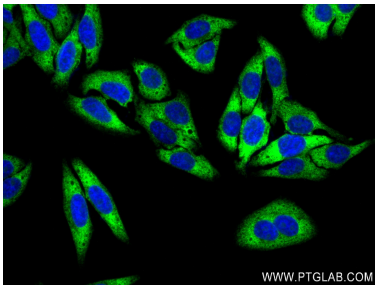
For technical support and original validation data for this product please contact:
T: 1 (888) 4PTGLAB (1-888-478-4522) (toll free in USA), or 1(312) 455-8498 (outside USA)
E: proteintech@ptglab.com
W: ptglab.com

This product is exclusively available under Proteintech Group brand and is not available to purchase from any other manufacturer.

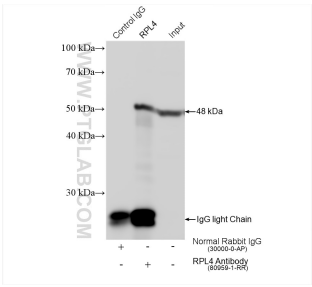
Selected Validation Data



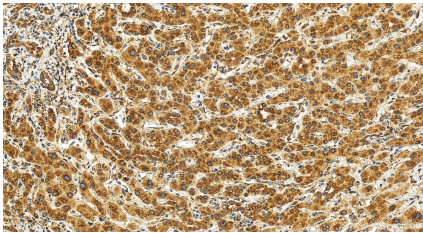
Various lysates were subjected to SDS PAGE followed by western blot with 80959-1-RR (RPL4 antibody) at dilution of 1:10000 incubated at room temperature for 1.5 hours.



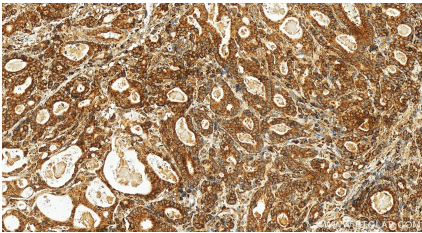
Immunofluorescent analysis of (4% PFA) fixed HepG2 cells using Ribosomal protein L4 antibody (80959-1-RR, Clone: 3K6) at dilution of 1:250 and CoraLite®488-Conjugated Goat Anti-Rabbit IgG(H+L) (SA00013-2).



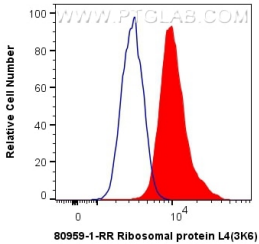
IP result of anti-Ribosomal protein L4 (IP:80959-1-RR, 4ug; Detection:80959-1-RR 1:2000) with HeLa cells lysate 1560 ug.



Immunohistochemical analysis of paraffin-embedded human intrahepatic cholangiocarcinoma tissue slide using 80959-1-RR (Ribosomal protein L4 antibody) at dilution of 1:200 (under 20x lens). Heat mediated antigen retrieval with Tris-EDTA buffer (pH 9.0).



Immunohistochemical analysis of paraffin-embedded human stomach cancer tissue slide using 80959-1-RR (Ribosomal protein L4 antibody) at dilution of 1:500 (under 20x lens). Heat mediated antigen retrieval with Tris-EDTA buffer(pH9).



1X10⁶ HepG2 cells were intracellularly stained with 0.4 ug Anti-Human Ribosomal protein L4 (80959-1-RR, Clone:3K6) and CoraLite®488-Conjugated AffiniPure Goat Anti-Rabbit IgG(H+L) at dilution 1:1000 (red), or 0.4 ug Isotype Control. Cells were fixed and permeabilized with Transcription Factor Staining Buffer Kit (PF00011).