

For Research Use Only

AFP Recombinant antibody, PBS Only



Catalog Number: 81083-1-PBS

Featured Product

Basic Information

Catalog Number:

81083-1-PBS

Size:

100ug , Concentration: 1 mg/ml by Nanodrop;

Source:

Rabbit

Isotype:

IgG

Immunogen Catalog Number:

AG6089

GenBank Accession Number:

BC027881

GeneID (NCBI):

174

UNIPROT ID:

P02771

Full Name:

alpha-fetoprotein

Calculated MW:

69 kDa

Observed MW:

68-72 kDa

Purification Method:

Protein A purification

CloneNo.:

2D17

Applications

Tested Applications:

WB, IHC, Indirect ELISA

Species Specificity:

Human

Background Information

AFP, also known as Alpha-fetoprotein, is a major plasma protein in the fetus and its concentration is very low in the adult (PubMed:24120489). AFP is considered a marker of hepatocyte precursors. AFP can be detected at abnormally high concentrations in hepatocellular carcinomas as well as in the plasma and ascitic fluid of adults with hepatoma. High AFP concentrations have been correlated with tumor cell growth, indicating that AFP can serve as a tumor marker (PubMed: 18669658).

Storage

Storage:

Store at -80°C.

Storage Buffer:

PBS Only

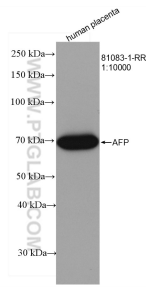
For technical support and original validation data for this product please contact:

T: 1 (888) 4PTGLAB (1-888-478-4522) (toll free in USA), or 1(312) 455-8498 (outside USA)

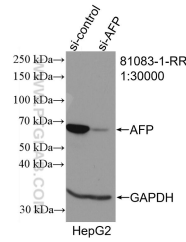
E: proteintech@ptglab.com
W: ptglab.com

This product is exclusively available under Proteintech Group brand and is not available to purchase from any other manufacturer.

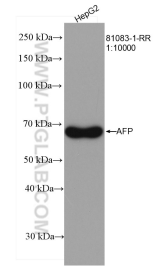
Selected Validation Data



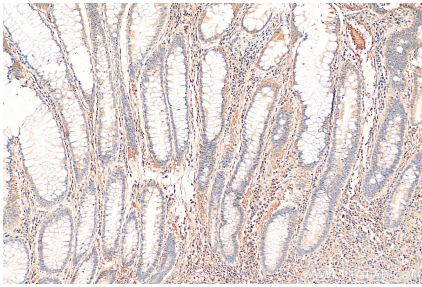
human placenta were subjected to SDS PAGE followed by western blot with 81083-1-RR (AFP antibody) at dilution of 1:10000 incubated at room temperature for 1.5 hours. This data was developed using the same antibody clone with 81083-1-PBS in a different storage buffer formulation.



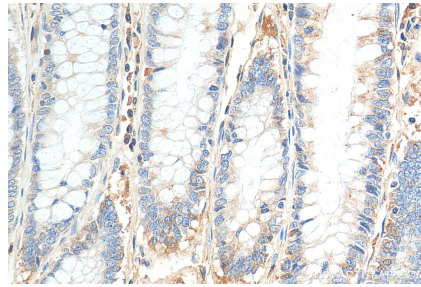
WB result of AFP antibody (81083-1-RR; 1:14000; incubated at room temperature for 1.5 hours) with sh-Control and sh-AFP transfected HepG2 cells. This data was developed using the same antibody clone with 81083-1-PBS in a different storage buffer formulation.



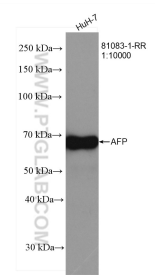
HepG2 cells were subjected to SDS PAGE followed by western blot with 81083-1-RR (AFP antibody) at dilution of 1:10000 incubated at room temperature for 1.5 hours. This data was developed using the same antibody clone with 81083-1-PBS in a different storage buffer formulation.



Immunohistochemical analysis of paraffin-embedded human colon cancer tissue slide using 81083-1-RR (AFP antibody) at dilution of 1:200 (under 10x lens). Heat mediated antigen retrieval with Tris-EDTA buffer (pH 9.0). This data was developed using the same antibody clone with 81083-1-PBS in a different storage buffer formulation.



Immunohistochemical analysis of paraffin-embedded human colon cancer tissue slide using 81083-1-RR (AFP antibody) at dilution of 1:200 (under 40x lens). Heat mediated antigen retrieval with Tris-EDTA buffer (pH 9.0). This data was developed using the same antibody clone with 81083-1-PBS in a different storage buffer formulation.



HuH-7 cells were subjected to SDS PAGE followed by western blot with 81083-1-RR (AFP antibody) at dilution of 1:10000 incubated at room temperature for 1.5 hours. This data was developed using the same antibody clone with 81083-1-PBS in a different storage buffer formulation.