

For Research Use Only

# AFP Recombinant antibody

Catalog Number: 81083-1-RR

Featured Product



## Basic Information

<b>Catalog Number:</b> 81083-1-RR	<b>GenBank Accession Number:</b> BC027881	<b>Purification Method:</b> Protein A purification
<b>Size:</b> 100ul , Concentration: 1000 µg/ml by Nanodrop;	<b>GeneID (NCBI):</b> 174	<b>CloneNo.:</b> 2D17
<b>Source:</b> Rabbit	<b>Full Name:</b> alpha-fetoprotein	<b>Recommended Dilutions:</b> WB 1:5000-1:50000 IHC 1:50-1:500
<b>Isotype:</b> IgG	<b>Calculated MW:</b> 69 kDa	
<b>Immunogen Catalog Number:</b> AG6089	<b>Observed MW:</b> 68-72 kDa	

## Applications

### Tested Applications:

IHC, WB, ELISA

### Species Specificity:

Human

**Note-IHC: suggested antigen retrieval with TE buffer pH 9.0; (\*) Alternatively, antigen retrieval may be performed with citrate buffer pH 6.0**

### Positive Controls:

WB : HepG2 cells, human placenta tissue, HuH-7 cells

IHC : human colon cancer tissue,

## Background Information

AFP, also known as Alpha-fetoprotein, is a major plasma protein in the fetus and its concentration is very low in the adult (PubMed:24120489). AFP is considered a marker of hepatocyte precursors. AFP can be detected at abnormally high concentrations in hepatocellular carcinomas as well as in the plasma and ascitic fluid of adults with hepatoma. High AFP concentrations have been correlated with tumor cell growth, indicating that AFP can serve as a tumor marker (PubMed: 18669658).

## Storage

### Storage:

Store at -20°C. Stable for one year after shipment.

### Storage Buffer:

PBS with 0.02% sodium azide and 50% glycerol pH 7.3.

Aliquoting is unnecessary for -20°C storage

\*\*\* 20ul sizes contain 0.1% BSA

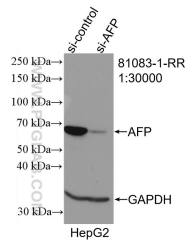
For technical support and original validation data for this product please contact:

T: 1 (888) 4PTGLAB (1-888-478-4522) (toll free  
in USA), or 1(312) 455-8498 (outside USA)

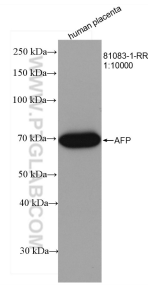
E: proteintech@ptglab.com  
W: ptglab.com

This product is exclusively available under Proteintech Group brand and is not available to purchase from any other manufacturer.

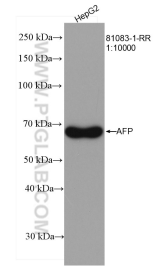
## Selected Validation Data



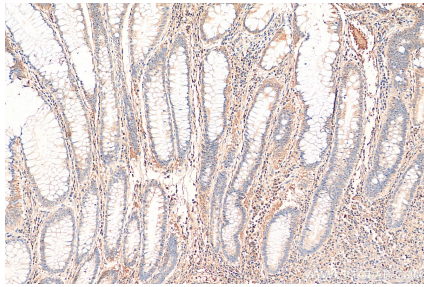
WB result of AFP antibody (81083-1-RR; 1:14000; incubated at room temperature for 1.5 hours) with sh-Control and sh-AFP transfected HepG2 cells.



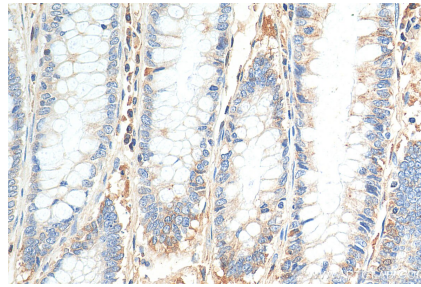
human placenta were subjected to SDS PAGE followed by western blot with 81083-1-RR (AFP antibody) at dilution of 1:10000 incubated at room temperature for 1.5 hours.



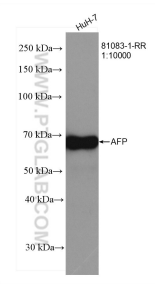
HepG2 cells were subjected to SDS PAGE followed by western blot with 81083-1-RR (AFP antibody) at dilution of 1:10000 incubated at room temperature for 1.5 hours.



Immunohistochemical analysis of paraffin-embedded human colon cancer tissue slide using 81083-1-RR (AFP antibody) at dilution of 1:200 (under 10x lens). Heat mediated antigen retrieval with Tris-EDTA buffer (pH 9.0).



Immunohistochemical analysis of paraffin-embedded human colon cancer tissue slide using 81083-1-RR (AFP antibody) at dilution of 1:200 (under 40x lens). Heat mediated antigen retrieval with Tris-EDTA buffer (pH 9.0).



HuH-7 cells were subjected to SDS PAGE followed by western blot with 81083-1-RR (AFP antibody) at dilution of 1:10000 incubated at room temperature for 1.5 hours.