

For Research Use Only

IDH1 Recombinant antibody

Catalog Number: 81176-1-RR



Basic Information

Catalog Number: 81176-1-RR	GenBank Accession Number: BC012846	Purification Method: Protein A purification
Size: 100ul , Concentration: 1000 ug/ml by Nanodrop;	GeneID (NCBI): 3417	CloneNo.: 6L18
Source: Rabbit	UNIPROT ID: O75874	Recommended Dilutions: WB 1:5000-1:50000 IHC 1:50-1:500
Isotype: IgG	Full Name: isocitrate dehydrogenase 1 (NADP+), soluble	
Immunogen Catalog Number: AG19749	Calculated MW: 414 aa, 47 kDa	
	Observed MW: 46 kDa	

Applications

Tested Applications: WB, IHC, FC (Intra), ELISA	Positive Controls:
Species Specificity: human, mouse, rat	WB : HeLa cells, HepG2 cells, LNCaP cells, mouse liver tissue, rat liver tissue
Note-IHC: suggested antigen retrieval with TE buffer pH 9.0; (*) Alternatively, antigen retrieval may be performed with citrate buffer pH 6.0	IHC : human gliomas tissue,

Background Information

IDH1, also named as PICD and IDP, belongs to the isocitrate and isopropylmalate dehydrogenases family. It is a common feature of a major subset of primary human brain cancers. It can form a homodimer(PMID:15173171). IDH1 mutation is always heterozygotic and IDH1 functions as a dimer, theoretically there will be 25% each wild type and mutant homo-dimers and 50% hetero-dimers present in the tumor cells(PMID:21079649).

Storage

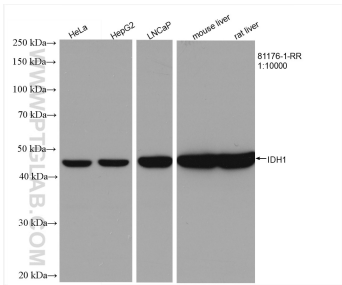
Storage:
Store at -20°C. Stable for one year after shipment.
Storage Buffer:
PBS with 0.02% sodium azide and 50% glycerol pH 7.3.
Aliquoting is unnecessary for -20°C storage

*** 20ul sizes contain 0.1% BSA

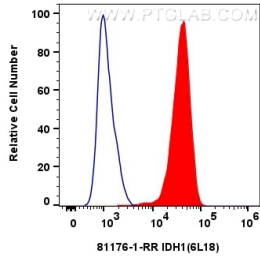
For technical support and original validation data for this product please contact:
T: 1 (888) 4PTGLAB (1-888-478-4522) (toll free in USA), or 1(312) 455-8498 (outside USA)
E: proteintech@ptglab.com
W: ptglab.com

This product is exclusively available under Proteintech Group brand and is not available to purchase from any other manufacturer.

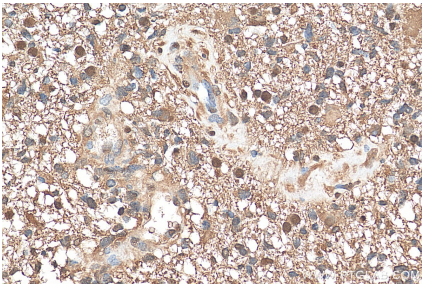
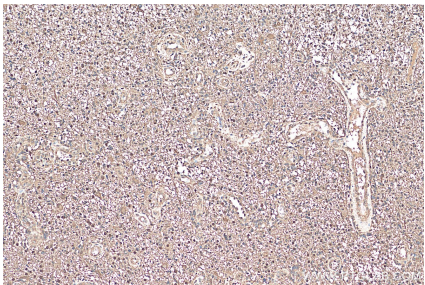
Selected Validation Data



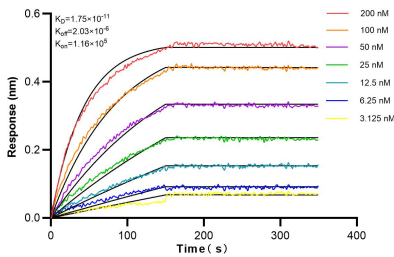
Various lysates were subjected to SDS PAGE followed by western blot with 81176-1-RR (IDH1 antibody) at dilution of 1:10000 incubated at room temperature for 1.5 hours.



1x10⁶ HepG2 cells were intracellularly stained with 0.25 ug IDH1 Recombinant antibody (81176-1-RR, Clone:6L18) and CoraLite®488-Conjugated AffiniPure Goat Anti-Rabbit IgG(H+L) (SA00013-2) (red), or 0.25 ug Isotype Control (blue). Cells were fixed with 4% PFA and permeabilized with Flow Cytometry Perm Buffer (PF00011-C).



Immunohistochemical analysis of paraffin-embedded human gliomas tissue slide using 81176-1-RR (IDH1 antibody) at dilution of 1:200 (under 40x lens). Heat mediated antigen retrieval with Tris-EDTA buffer (pH 9.0).



Biolayer interferometry (BLI) kinetic assays of 81176-1-RR against Human IDH1 were performed. The affinity constant is 17.5 pM.