

For Research Use Only

Phospho-S6 Ribosomal protein (Ser240/244) Recombinant antibody

Catalog Number: 81184-1-RR



Basic Information

Catalog Number:

81184-1-RR

Size:

100ul , Concentration: 400 ug/ml by
Nanodrop;

Source:

Rabbit

Isotype:

IgG

GenBank Accession Number:

NM_001010

GeneID (NCBI):

6194

UNIPROT ID:

P62753

Full Name:

ribosomal protein S6

Observed MW:

32 kDa

Purification Method:

Protein A purification

CloneNo.:

5J13

Applications

Tested Applications:

FC (Intra), ELISA

Species Specificity:

human

Background Information

Ribosomal protein S6 (RPS6), also named Phosphoprotein NP33, may play an important role in controlling cell growth and proliferation through the selective translation of particular classes of mRNA. Ribosomal protein S6 is the major substrate of protein kinases in eukaryote ribosomes. The phosphorylation is stimulated by growth factors, tumor promoting agents, and mitogens and is dephosphorylated at growth arrest.

Storage

Storage:

Store at -20°C. Stable for one year after shipment.

Storage Buffer:

PBS with 0.02% sodium azide and 50% glycerol pH 7.3.

Aliquoting is unnecessary for -20°C storage

*** 20ul sizes contain 0.1% BSA

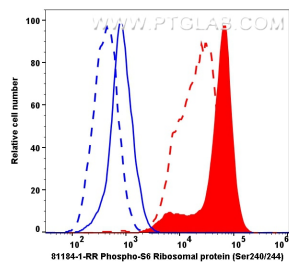
For technical support and original validation data for this product please contact:

T: 1 (888) 4PTGLAB (1-888-478-4522) (toll free
in USA), or 1(312) 455-8498 (outside USA)

E: proteintech@ptglab.com
W: ptglab.com

This product is exclusively available under Proteintech Group brand and is not available to purchase from any other manufacturer.

Selected Validation Data



1x10⁶ untreated HeLa cells (dash lines) and 100 nM Calyculin A (30 minutes) treated HeLa cells (full lines) were intracellularly stained with 0.4 µg Phospho-S6 Ribosomal protein (Ser240/244) Recombinant antibody (81184-1-RR, Clone: 5J13, red) and Multi-rAb CoraLite ® Plus 647-Goat Anti-Rabbit Recombinant Secondary Antibody (H+L) (Cat.NO. RGAR005). Rabbit IgG Isotype Control Recombinant Antibody (98136-1-RR, Clone: 240953C9, blue) was parallel stained

