

For Research Use Only

mCherry Recombinant antibody

Catalog Number: 81202-2-RR



Basic Information

Catalog Number:

81202-2-RR

Size:

100ul, Concentration: 1000 ug/ml by Nanodrop;

Source:

Rabbit

Isotype:

IgG

Immunogen Catalog Number:

AG25320

GenBank Accession Number:

GeneID (NCBI):

Full Name:

Calculated MW:

27 kDa

Purification Method:

Protein A purification

CloneNo.:

241830F8

Recommended Dilutions:

WB 1:5000-1:50000

IF/ICC 1:200-1:800

Applications

Tested Applications:

WB, IF/ICC, FC (Intra), ELISA

Species Specificity:

recombinant protein

Positive Controls:

WB : Transfected HEK-293T cells,

IF/ICC : Transfected HEK-293 cells,

Background Information

Red fluorescent proteins (RFPs) is a collective term referring to a heterogeneous group of red chromophore-carrying proteins, originating from various species and forming different protein lineages. The original RFP (dsRed) is a 225 amino acid fluorescent protein (25.9 kDa) derived from *Discosoma sp.*. It emits red light with a peak wavelength of 593 nm upon excitation by green light (excitation peak at 558 nm). When fused with other proteins, RFP serves as a versatile reporter protein e.g. for quantifying expression levels or facilitating visualization of subcellular localization through fluorescence microscopy. This antibody is a rabbit polyclonal antibody raised against mCherry.

Storage

Storage:

Store at -20°C. Stable for one year after shipment.

Storage Buffer:

PBS with 0.02% sodium azide and 50% glycerol

Aliquoting is unnecessary for -20°C storage

*** 20ul sizes contain 0.1% BSA

For technical support and original validation data for this product please contact:

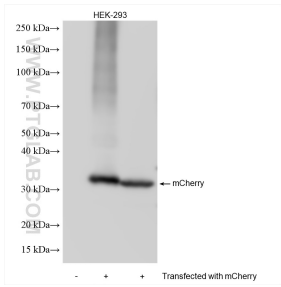
T: 1 (888) 4PTGLAB (1-888-478-4522) (toll free in USA), or 1(312) 455-8498 (outside USA)

E: proteintech@ptglab.com

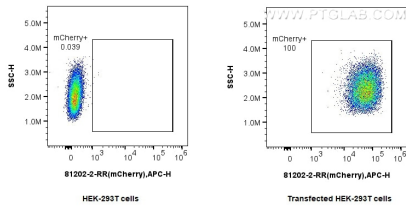
W: ptglab.com

This product is exclusively available under Proteintech Group brand and is not available to purchase from any other manufacturer.

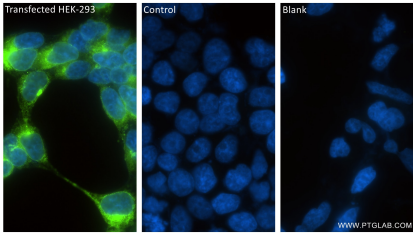
Selected Validation Data



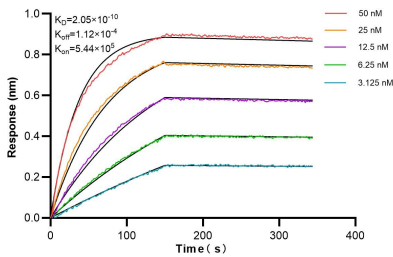
Various lysates were subjected to SDS PAGE followed by western blot with 81202-2-RR (mCherry antibody) at dilution of 1:20000 incubated at room temperature for 1.5 hours.



1x10⁶ HEK-293T cells or mCherry Transfected HEK-293T cells were intracellularly stained with 0.25 ug mCherry Recombinant antibody (81202-2-RR, Clone:241830F8) and APC-Conjugated Goat Anti-Rabbit IgG(H+L). Cells were fixed with 4% PFA and permeabilized with Flow Cytometry Perm Buffer (PF00011-C).



Immunofluorescent analysis of (4% PFA) fixed Transfected HEK-293 cells using mCherry antibody (81202-2-RR, Clone: 241830F8) at dilution of 1:400 and CoraLite®488-Conjugated Goat Anti-Rabbit IgG(H+L) (SA00013-2).



Biolayer interferometry (BLI) kinetic assays of 81202-2-RR against mCherry were performed. The affinity constant is 0.205 nM.