

For Research Use Only

GRB10 Recombinant antibody

Catalog Number: 81225-1-RR



Basic Information

Catalog Number: 81225-1-RR	GenBank Accession Number: BC024285	Purification Method: Protein A purification
Size: 100ul , Concentration: 1000 ug/ml by Nanodrop;	GeneID (NCBI): 2887	CloneNo.: 1D13
Source: Rabbit	UNIPROT ID: Q13322	Recommended Dilutions: WB 1:5000-1:50000 IF/ICC 1:500-1:2000
Isotype: IgG	Full Name: growth factor receptor-bound protein 10	
Immunogen Catalog Number: AG20355	Calculated MW: 536aa,61 kDa; 594aa,67 kDa	
	Observed MW: 60-70 kDa	

Applications

Tested Applications: WB, IF/ICC, ELISA	Positive Controls:
Species Specificity: human, mouse, rat	WB : PC-3 cells, NIH/3T3 cells, HSC-T6 cells IF/ICC : LNCaP cells,

Background Information

GRB10 is an adapter protein which modulates coupling of a number of cell surface receptor kinases with specific signaling pathways. GRB10 has three consensus domains including pleckstrin homology (PH) domain, SH2/SH3 domain and Ras-associating domain. By binding to kinases, GRB10 suppresses signals from activated receptors tyrosine kinases, including INSR and IGF1R. It may play a role in mediating ubiquitination of INSR, leading to proteasomal degradation. GRB10 has 4 isoforms with the molecular mass of 60-70 kDa, which are produced by alternative splicing.

Storage

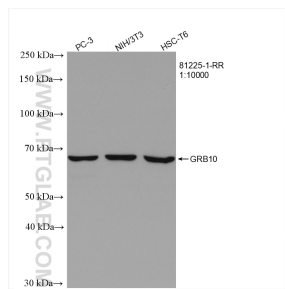
Storage:
Store at -20°C. Stable for one year after shipment.
Storage Buffer:
PBS with 0.02% sodium azide and 50% glycerol pH 7.3.
Aliquoting is unnecessary for -20°C storage

*** 20ul sizes contain 0.1% BSA

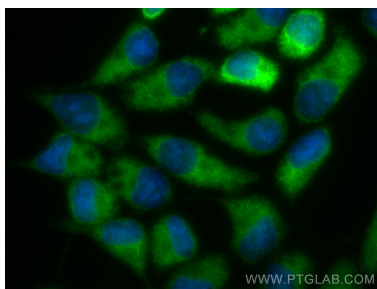
For technical support and original validation data for this product please contact:
T: 1 (888) 4PTGLAB (1-888-478-4522) (toll free in USA), or 1(312) 455-8498 (outside USA)
E: proteintech@ptglab.com
W: ptglab.com

This product is exclusively available under Proteintech Group brand and is not available to purchase from any other manufacturer.

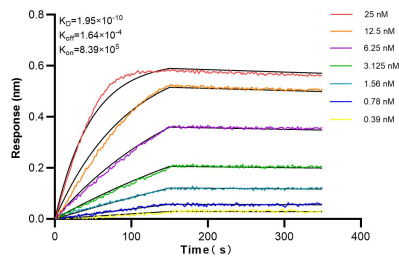
Selected Validation Data



Various lysates were subjected to SDS PAGE followed by western blot with 81225-1-RR (GRB10 antibody) at dilution of 1:10000 incubated at room temperature for 1.5 hours.



Immunofluorescent analysis of (-20°C Methanol) fixed LNCaP cells using GRB10 antibody (81225-1-RR, Clone: 1D13) at dilution of 1:1000 and CoraLite®488-Conjugated AffiniPure Goat Anti-Rabbit IgG(H+L).



Biolayer interferometry (BLI) kinetic assays of 81225-1-RR against Human GRB10 were performed. The affinity constant is 0.195 nM.