

For Research Use Only

# EEA1 Recombinant antibody

Catalog Number: 81245-1-RR

Featured Product



## Basic Information

Catalog Number:

81245-1-RR

Size:

100ul , Concentration: 1000 ug/ml by Nanodrop;

Source:

Rabbit

Isotype:

IgG

Immunogen Catalog Number:

AG28814

GenBank Accession Number:

NM\_003566

GeneID (NCBI):

8411

UNIPROT ID:

Q15075

Full Name:

early endosome antigen 1

Calculated MW:

162 kDa

Observed MW:

162 kDa

Purification Method:

Protein A purification

CloneNo.:

2C11

Recommended Dilutions:

WB 1:5000-1:50000

## Applications

Tested Applications:

WB, ELISA

Species Specificity:

Human, Mouse, Rat

Positive Controls:

WB : A431 cells, HepG2 cells, HeLa cells, LNCaP cells, Jurkat cells, K-562 cells, NIH/3T3 cells, HSC-T6 cells

## Background Information

Early endosome antigen 1 (EEA1) is a marker of early endosomes and has an important role in endosomal trafficking. EEA1 contains coiled-coil regions and an FYVE-type zinc finger which interacts with phosphatidylinositol-3-phosphate. EEA1 functions as a Rab5 effector, mediates endosome docking and, together with SNAREs, leads to membrane fusion.

## Storage

Storage:

Store at -20°C. Stable for one year after shipment.

Storage Buffer:

PBS with 0.02% sodium azide and 50% glycerol pH 7.3.

Aliquoting is unnecessary for -20°C storage

\*\*\* 20ul sizes contain 0.1% BSA

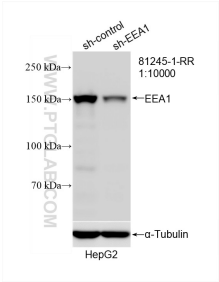
For technical support and original validation data for this product please contact:

T: 1 (888) 4PTGLAB (1-888-478-4522) (toll free in USA), or 1(312) 455-8498 (outside USA)

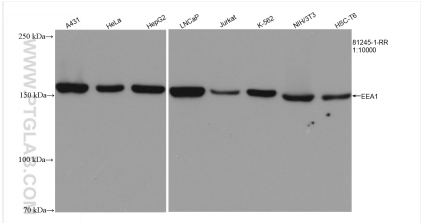
E: proteintech@ptglab.com  
W: ptglab.com

This product is exclusively available under Proteintech Group brand and is not available to purchase from any other manufacturer.

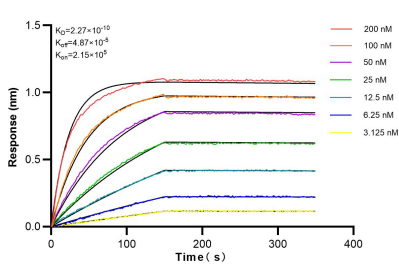
Selected Validation Data



WB result of EEA1 antibody (81245-1-RR; 1:10000; incubated at room temperature for 1.5 hours) with sh-Control and sh-EEA1 transfected HepG2 cells.



Various lysates were subjected to SDS PAGE followed by western blot with 81245-1-RR (EEA1 antibody) at dilution of 1:10000 incubated at room temperature for 1.5 hours.



Biolayer interferometry (BLI) kinetic assays of 81245-1-RR against Human EEA1 were performed. The affinity constant is 0.227 nM.