

For Research Use Only

# CD3 Recombinant antibody, PBS Only

Catalog Number: 81324-1-PBS

Featured Product



## Basic Information

### Catalog Number:

81324-1-PBS

### Size:

100ug, Concentration: 1mg/ml by Nanodrop;

### Source:

Rabbit

### Isotype:

IgG

### Immunogen Catalog Number:

AG11797

### GenBank Accession Number:

BC049847

### GeneID (NCBI):

916

### ENSEMBL Gene ID:

ENSG00000198851

### UNIPROT ID:

P07766

### Full Name:

CD3e molecule, epsilon (CD3-TCR complex)

### Calculated MW:

207 aa, 23 kDa

### Observed MW:

23-25 kDa

### Purification Method:

Protein A purification

### CloneNo.:

4I19

## Applications

### Tested Applications:

WB, IHC, IF-P, Indirect ELISA

### Species Specificity:

human, mouse, rat, pig

## Background Information

CD3 is a complex of proteins that directly associates with the T cell receptor (TCR). The TCR/CD3 complex of T-lymphocytes consists of either a TCR alpha/beta or TCR gamma/delta heterodimer coexpressed at the cell surface with the invariant subunits of CD3 labeled gamma, delta, epsilon, zeta, and eta. The TCR recognizes antigens bound to major histocompatibility complex (MHC) molecules. TCR-mediated peptide-MHC recognition is transmitted to the CD3 complex, leading to the intracellular signal transduction. CD3 is considered to be a pan-T cell marker for detection of normal and neoplastic T cells. This antibody is directed against the epsilon chain of human CD3 molecule.

## Storage

### Storage:

Store at -80°C.

### Storage Buffer:

PBS Only

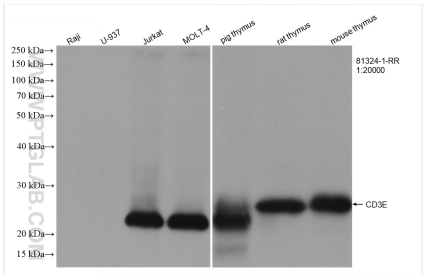
For technical support and original validation data for this product please contact:

T: 1 (888) 4PTGLAB (1-888-478-4522) (toll free in USA), or 1(312) 455-8498 (outside USA)

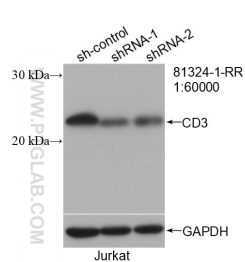
E: [proteintech@ptglab.com](mailto:proteintech@ptglab.com)  
W: [ptglab.com](http://ptglab.com)

This product is exclusively available under Proteintech Group brand and is not available to purchase from any other manufacturer.

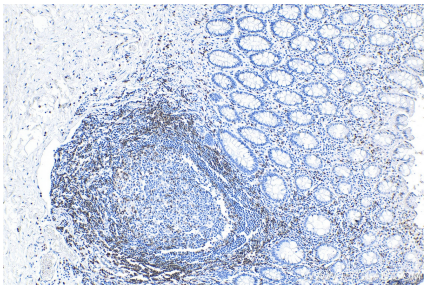
Selected Validation Data



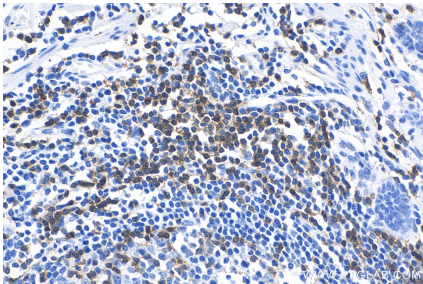
Various lysates were subjected to SDS PAGE followed by western blot with 81324-1-RR (CD3E antibody) at dilution of 1:20000 incubated at room temperature for 1.5 hours. This data was developed using the same antibody clone with 81324-1-PBS in a different storage buffer formulation.



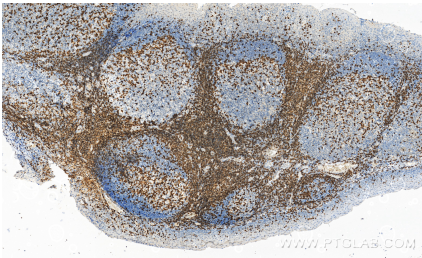
WB result of CD3 antibody (81324-1-RR; 1:60000; incubated at room temperature for 1.5 hours) with sh-Control and sh-CD3 transfected Jurkat cells. This data was developed using the same antibody clone with 81324-1-PBS in a different storage buffer formulation.



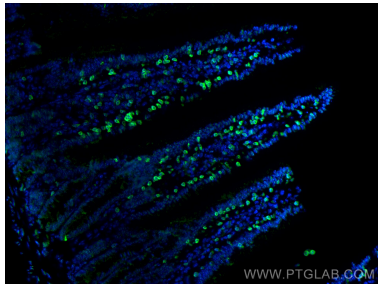
Immunohistochemical analysis of paraffin-embedded human colon tissue slide using 81324-1-RR (CD3 antibody) at dilution of 1:10000 (under 10x lens). Heat mediated antigen retrieval with Tris-EDTA buffer (pH 9.0). This data was developed using the same antibody clone with 81324-1-PBS in a different storage buffer formulation.



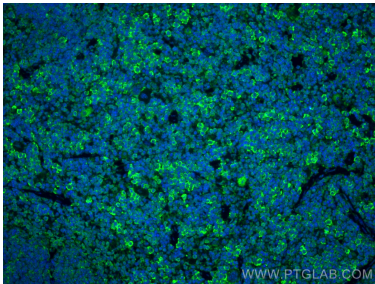
Immunohistochemical analysis of paraffin-embedded human colon tissue slide using 81324-1-RR (CD3 antibody) at dilution of 1:10000 (under 40x lens). Heat mediated antigen retrieval with Tris-EDTA buffer (pH 9.0). This data was developed using the same antibody clone with 81324-1-PBS in a different storage buffer formulation.



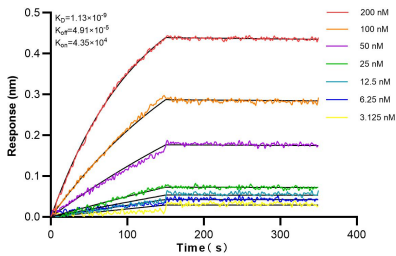
Immunohistochemical analysis of paraffin-embedded human tonsillitis tissue slide using 81324-1-RR (CD3 antibody) at dilution of 1:10000 (under 10x lens). Heat mediated antigen retrieval with Tris-EDTA buffer (pH 9.0). This data was developed using the same antibody clone with 81324-1-PBS in a different storage buffer formulation.



Immunofluorescent analysis of (4% PFA) fixed paraffin-embedded mouse small intestine tissue using CD3 antibody (81324-1-RR, Clone: 4I19 ) at dilution of 1:1000 and CoraLite®488-Conjugated Goat Anti-Rabbit IgG(H+L) (SA00013-2). Heat mediated antigen retrieval with Tris-EDTA buffer (pH 9.0). This data was developed using the same antibody clone with 81324-1-PBS in a different storage buffer formulation.



Immunofluorescent analysis of (4% PFA) fixed paraffin-embedded mouse spleen tissue using CD3 antibody (81324-1-RR, Clone: 4I19 ) at dilution of 1:200 and CoraLite®488-Conjugated Goat Anti-Rabbit IgG(H+L) (SA00013-2). Heat mediated antigen retrieval with Tris-EDTA buffer (pH 9.0). This data was developed using the same antibody clone with 81324-1-PBS in a different storage buffer formulation.



Biolayer interferometry (BLI) kinetic assays of 81324-1-RR against Human CD3 were performed. The affinity constant is 1.13 nM.