

For Research Use Only

IKKB Recombinant antibody, PBS Only

Catalog Number: 81347-2-PBS



Basic Information

Catalog Number: 81347-2-PBS	GenBank Accession Number: BC006231	Purification Method: Protein A purification
Size: 100ug , Concentration: 1 mg/ml by Nanodrop;	GeneID (NCBI): 3551	CloneNo.: 250538F11
Source: Rabbit	UNIPROT ID: O14920	
Isotype: IgG	Full Name: inhibitor of kappa light polypeptide gene enhancer in B-cells, kinase beta	
Immunogen Catalog Number: AG8191	Calculated MW: 756aa,81 kDa; 256aa,29 kDa	
	Observed MW: 80-85 kDa	

Applications

Tested Applications:
WB, Indirect ELISA

Species Specificity:
human, mouse, rat

Background Information

IKKB, also named as IKKB, IKK2, NFKB1 and IKK-B, belongs to the protein kinase superfamily, Ser/Thr protein kinase family and I-kappa-B kinase subfamily. IKKB is a Serine kinase that plays an essential role in the NF-kappa-B signaling pathway. It acts as part of the canonical IKK complex in the conventional pathway of NF-kappa-B activation and phosphorylates inhibitors of NF-kappa-B on 2 critical serine residues. In addition to the NF-kappa-B inhibitors, IKKB phosphorylates several other components of the signaling pathway including NEMO/IKBKG, NF-kappa-B subunits RELA and NFkB1, as well as IKK-related kinases TBK1 and IKBKE. It also phosphorylates other substrates including NCOA3, BCL10 and IRS1. Within the nucleus, IKKB acts as an adapter protein for NFKBIA degradation in UV-induced NF-kappa-B activation.

Storage

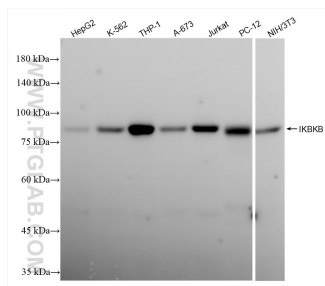
Storage:
Store at -80°C.

Storage Buffer:
PBS only, pH7.3

For technical support and original validation data for this product please contact:
T: 1 (888) 4PTGLAB (1-888-478-4522) (toll free in USA), or 1(312) 455-8498 (outside USA)
E: proteintech@ptglab.com
W: ptglab.com

This product is exclusively available under Proteintech Group brand and is not available to purchase from any other manufacturer.

Selected Validation Data



Various lysates were subjected to SDS PAGE followed by western blot with 81347-2-RR (IKKβ antibody) at dilution of 1:2000 incubated at room temperature for 1.5 hours. This data was developed using the same antibody clone with 81347-2-PBS in a different storage buffer formulation.